

45/120

PROMENADE AT BOCA POINTE NO. I

PART OF A BOCA POINTE, A P.U.D.

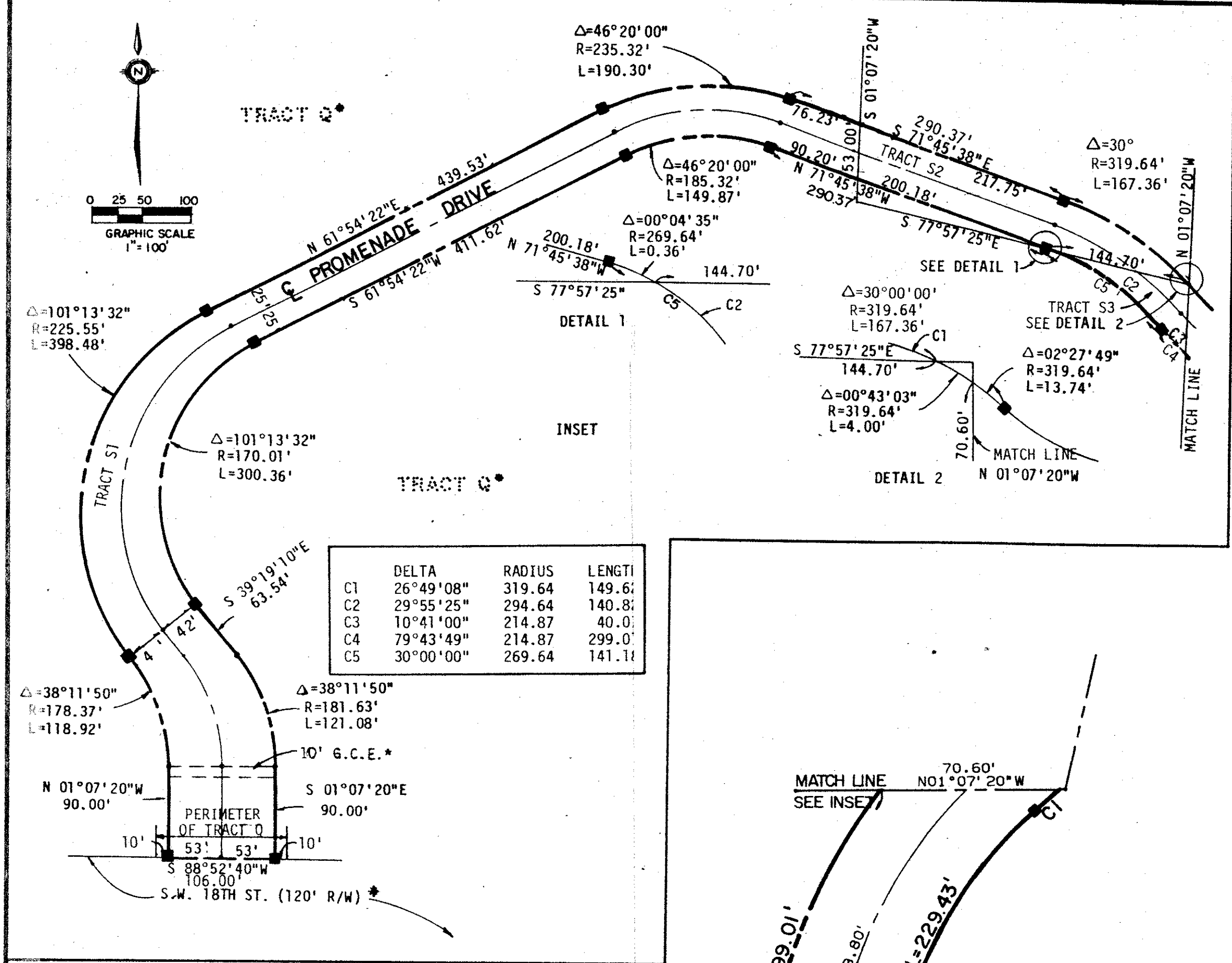
A REPLAT OF A PORTION OF TRACT Q OF BOCA POINTE NO. I,
A P.U.D., SITUATE IN SECTION 33, TOWNSHIP 47 SOUTH, RANGE
42 EAST, PALM BEACH COUNTY, FLORIDA.

JANUARY, 1983

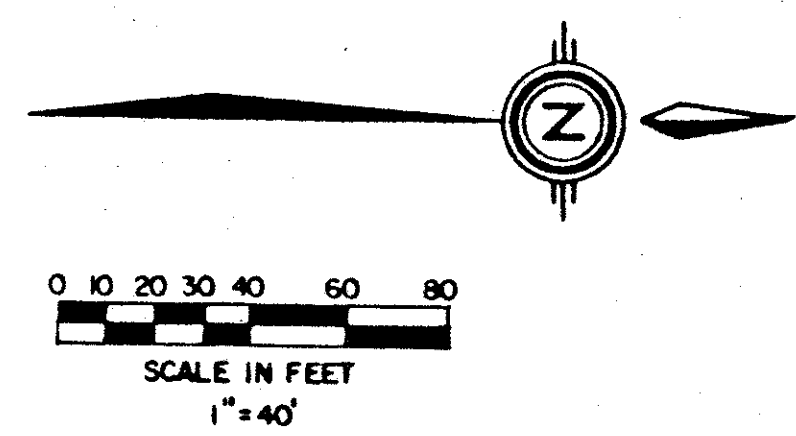
SHEET 2 OF 2

120

STATE OF FLORIDA
COUNTY OF PALM BEACH
THIS PLAT WAS FILED FOR
RECORD AT _____
THIS DAY OF _____
AD, 1983 AND DULY RECORDED
IN PLAT BOOK _____ ON PAGES
AND _____
JOHN B. DUNKLE, CLERK
CIRCUIT COURT
BY: _____ DC.



	DELTA	RADIUS	LENGTH
C1	26°49'08"	319.64	149.61
C2	29°55'25"	294.64	140.81
C3	10°41'00"	214.87	40.01
C4	79°43'49"	214.87	299.01
C5	30°00'00"	269.64	141.11

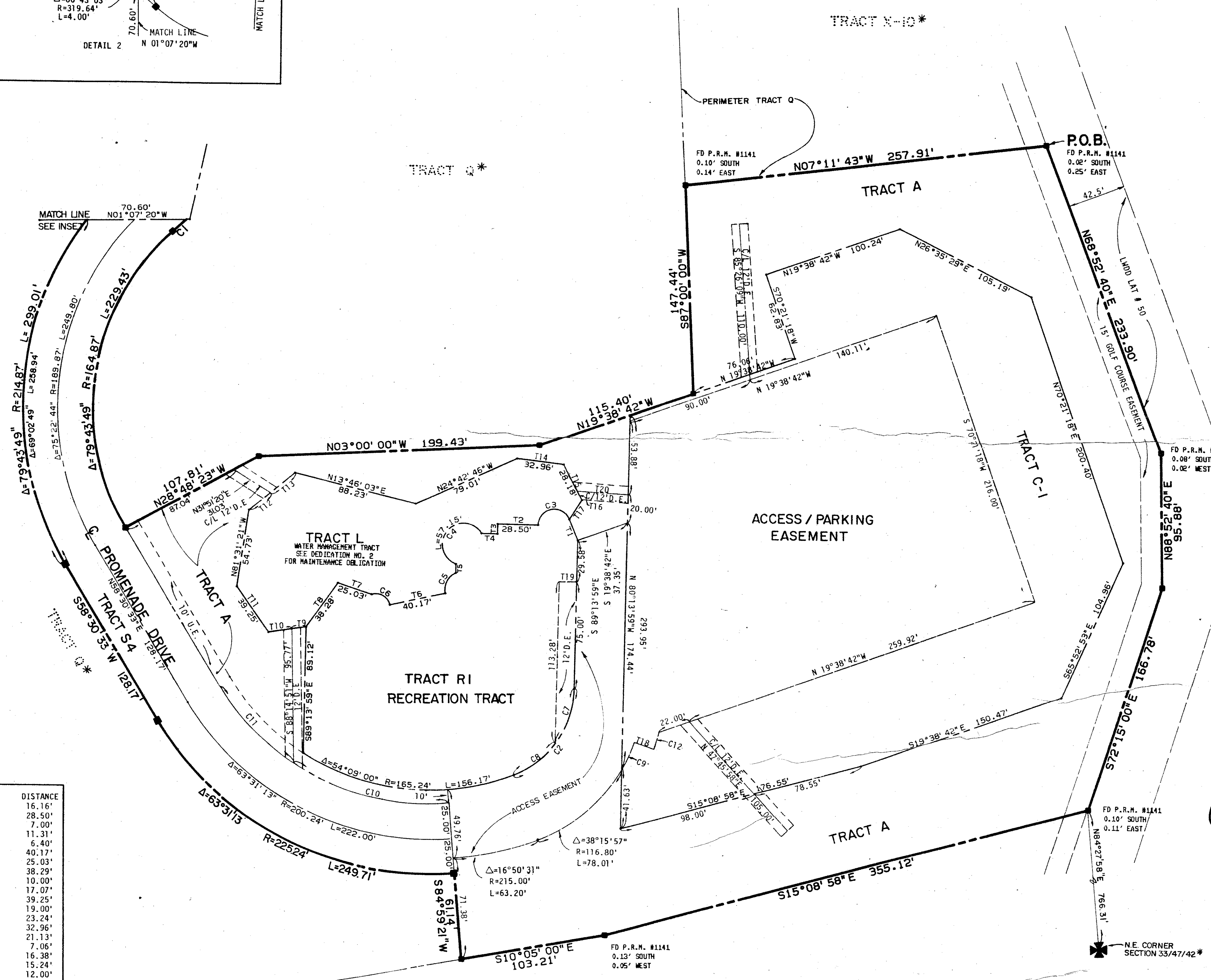


P.U.D. TABULAR DATA

GROSS AREA OF PROJECT	8.88± ACRES
TOTAL NUMBER OF DWELLING UNITS	76
GROSS DENSITY	8.56 D.U./AC
BUILDING COVERAGE	0.75± AC 815Z
UNCOVERED PARKING	0.63± AC 739Z
ACCESS ROADS	1.97± AC 2219Z
1/2 RECREATION AREA	0.33± AC 312Z
OPEN SPACE	
1/2 RECREATION AREA	0.33± AC 312Z
REMAINING AREA	4.87± AC 54.44Z
TOTAL OPEN SPACE	5.20± AC 58.6Z

	DELTA	RADIUS	LENGTH
C1	02°27'49"	319.64	13.74
C2	67°22'48"	67.04	78.84
C3	156°27'13"	11.50	31.40
C4	218°17'52"	15.00	57.15
C5	79°40'04"	12.50	17.38
C6	95°50'36"	10.00	16.73
C7	34°48'53"	67.04	40.74
C8	32°33'56"	67.04	38.10
C9	10°42'16"	116.80	21.82
C10	37°27'58"	175.24	114.59
C11	26°03'14"	175.24	79.69
C12	05°42'56"	132.04	13.17

	BEARING	DISTANCE
T1	N 57°13'14"E	16.16'
T2	N 00°46'01"E	28.50'
T3	N 39°13'59"W	7.00'
T4	N 30°46'01"E	11.31'
T5	N 39°13'59"W	6.40'
T6	N 2°28'44"W	40.17'
T7	N 7°48'47"E	25.03'
T8	N 4°06'38"W	38.29'
T9	S 89°06'38"E	10.00'
T10	S 09°06'38"E	17.07'
T11	S 54°35'50"W	39.25'
T12	N 39°33'29"W	19.00'
T13	N 39°33'29"W	23.24'
T14	N 06°59'04"E	32.96'
T15	N 62°05'07"E	21.13'
T16	N 62°05'07"E	7.06'
T17	S 57°49'41"E	16.38'
T18	N 1°10'37"E	15.24'
T19	N 00°46'01"E	12.00'
T20	S 03°51'42"W	36.36'



0211-019

45/120

* REFER TO THE PLAT OF BOCA POINTE NO. I (PB. 42, P. 141-143)

Meridian Surveying and mapping inc. WEST PALM BEACH, FLORIDA

DRAWN	MEH	DATE	DEC. 1982
CHECKED		SCALE	1" = 40'
DRAWING NO.	81-P-077		

PROMENADE AT BOCA POINTE NO. I
PART OF BOCA POINTE, A P.U.D.