

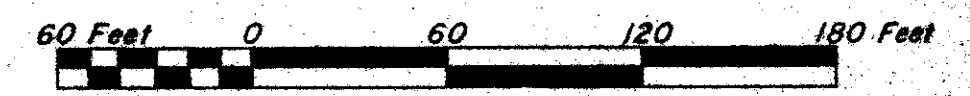
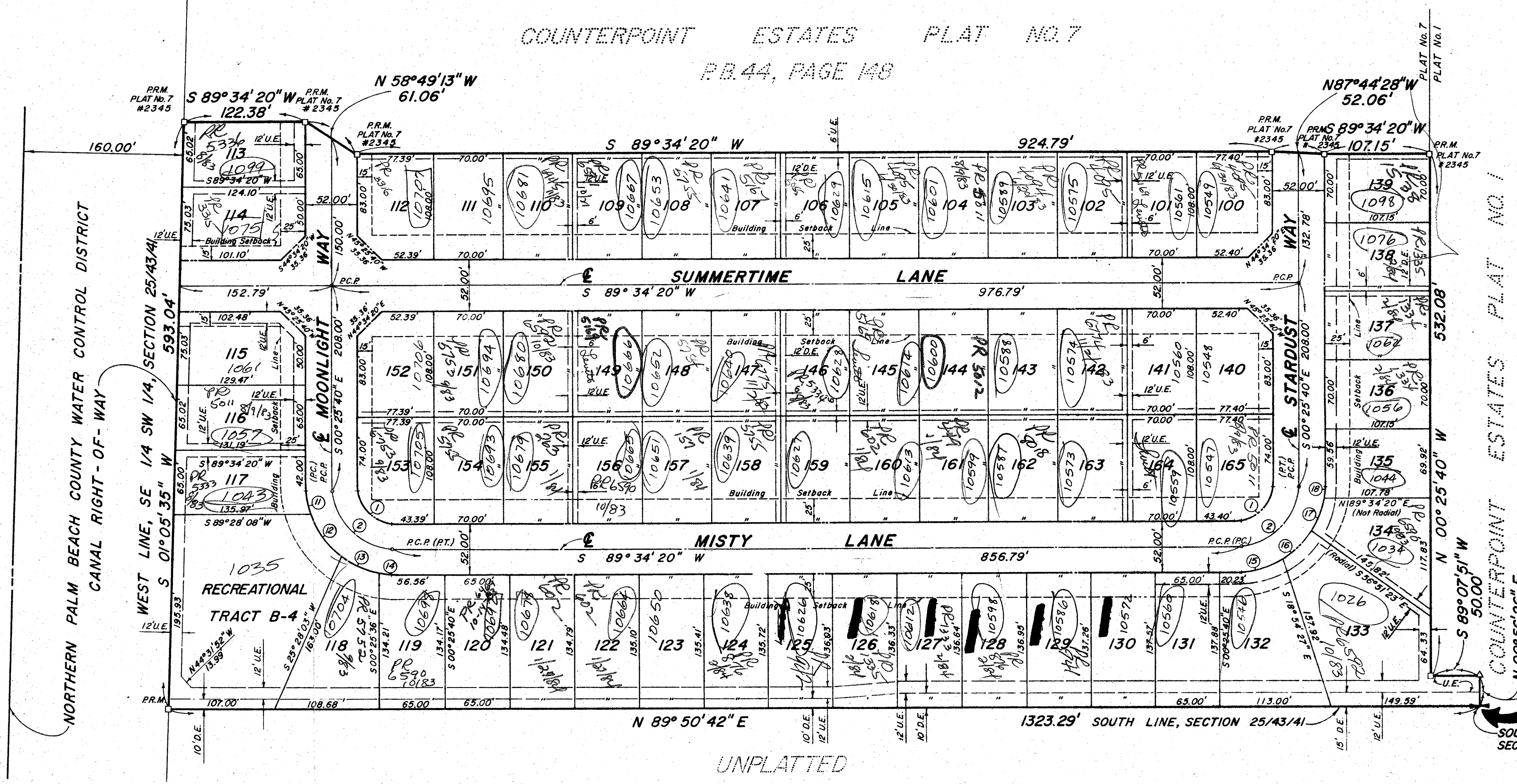
45/108

COUNTERPOINT ESTATES PLAT No.9

108

IN SECTION 25, TOWNSHIP 43 SOUTH, RANGE 41 EAST, PALM BEACH COUNTY, FLORIDA

COUNTERPOINT ESTATES PLAT NO.7
P.B.44, PAGE 148



GRAPHIC SCALE

BEARING DATUM

ALL BEARINGS SHOWN HEREON ARE RELATED TO AN ASSUMED BEARING OF S 01° 05' 35" W ALONG THE WEST LINE OF THE SOUTHEAST ONE-QUARTER (SE 1/4) OF THE SOUTHWEST ONE-QUARTER (SW 1/4) OF SECTION 25, T 43 S, R 41 E.

P.O.B.
SOUTH 1/4 CORNER OF SECTION 25/43/41

0225-305

LEGEND

- U.E. INDICATES POWER AND/OR TELEPHONE EASEMENT
- D.E. INDICATES DRAINAGE EASEMENT
- W.S. INDICATES WATER AND/OR SANITARY SEWER EASEMENT
- P.C.P. INDICATES PERMANENT CONTROL POINT
- P.R.M. INDICATES PERMANENT REFERENCE MONUMENT

CURVE DATA				
CURVE NO.	RADIUS	DELTA	ARC	CHORD
1	34.00'	90°00'00"	53.41'	48.08'
2	60.00'	90°00'00"	94.25'	84.85'
11	86.00'	15°19'20"	23.00'	22.93'
12	86.00'	42°24'27"	63.65'	62.31'
13	86.00'	26°38'56"	40.00'	39.64'
14	86.00'	05°37'30"	8.44'	8.44'
15	86.00'	29°46'46"	44.70'	44.20'
16	86.00'	26°38'57"	40.00'	39.64'
17	86.00'	26°38'57"	40.00'	39.64'
18	86.00'	06°55'20"	10.39'	10.38'

SURVEYOR'S NOTES

1. NO BUILDINGS OR ANY KIND OF CONSTRUCTION SHALL BE PLACED ON UTILITY OR DRAINAGE EASEMENTS.
2. NO STRUCTURES, TREES OR SHRUBS SHALL BE PLACED ON DRAINAGE EASEMENTS.
3. APPROVAL OF LANDSCAPING ON UTILITY EASEMENTS OTHER THAN WATER AND SEWER SHALL BE ONLY WITH THE APPROVAL OF ALL UTILITIES OCCUPYING SAME.

TURNOUT REQUIRED
STREET REQUIRED

FLORIDA SURVEYING & MAPPING, INC.
REGISTERED LAND SURVEYORS
WEST PALM BEACH, FLORIDA

COUNTERPOINT ESTATES PLAT NO. 9

DESIGNED BY: P.S.	APPROVED: AS SHOWN	DATE: MAY 1982	SHEET: 3
DRAWN BY: PB/LV	CHECKED BY: GGP	DATE: MAY 1982	SHEET: 3