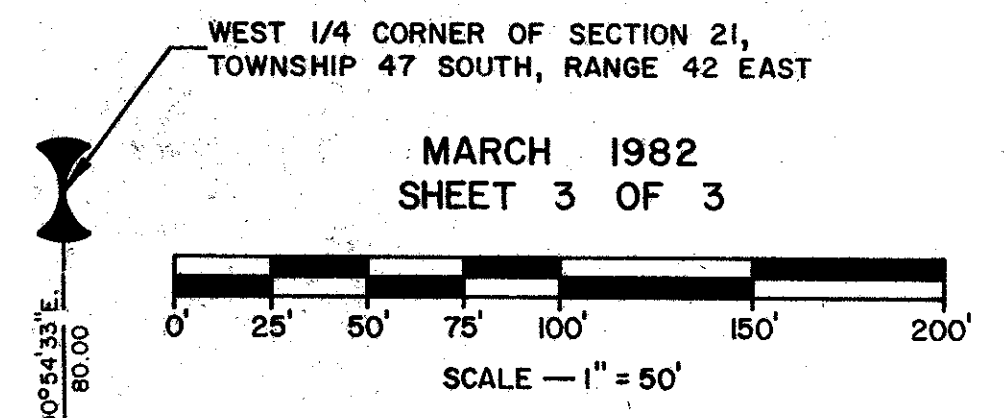


45/58

58

PART OF A P.U.D.
SOLIMAR AT BOCA DEL MAR - PHASE II
 A PLAT OF A PORTION OF SECTION 21, TWP. 47 S., RGE. 42 E.
 AND ALSO BEING A REPLAT OF A PORTION OF TRACT 1, OF BOCA DEL MAR NO. 5, AS RECORDED
 IN PLAT BOOK 30, PAGES 127 & 128 OF THE PUBLIC RECORDS OF PALM BEACH COUNTY, FLORIDA

JOHN A. GRANT, JR., INC. CONSULTING ENGINEERS & LAND SURVEYORS BOCA RATON, FLORIDA



WEST 1/4 CORNER OF SECTION 21,
 TOWNSHIP 47 SOUTH, RANGE 42 EAST

MARCH 1982
 SHEET 3 OF 3

SCALE - 1" = 50'

NORTHWEST CORNER OF TRACT 1
 N89°38'50"E 1430.53

SOUTH RIGHT-OF-WAY LINE
 OF L.W.D.D. LATERAL NO. 47

L.W.D.D. LATERAL NO. 47 N89°38'50"E 435.00

L.W.D.D. LATERAL NO. 47 N89°38'50"E 575.00

L.W.D.D. LATERAL NO. 47

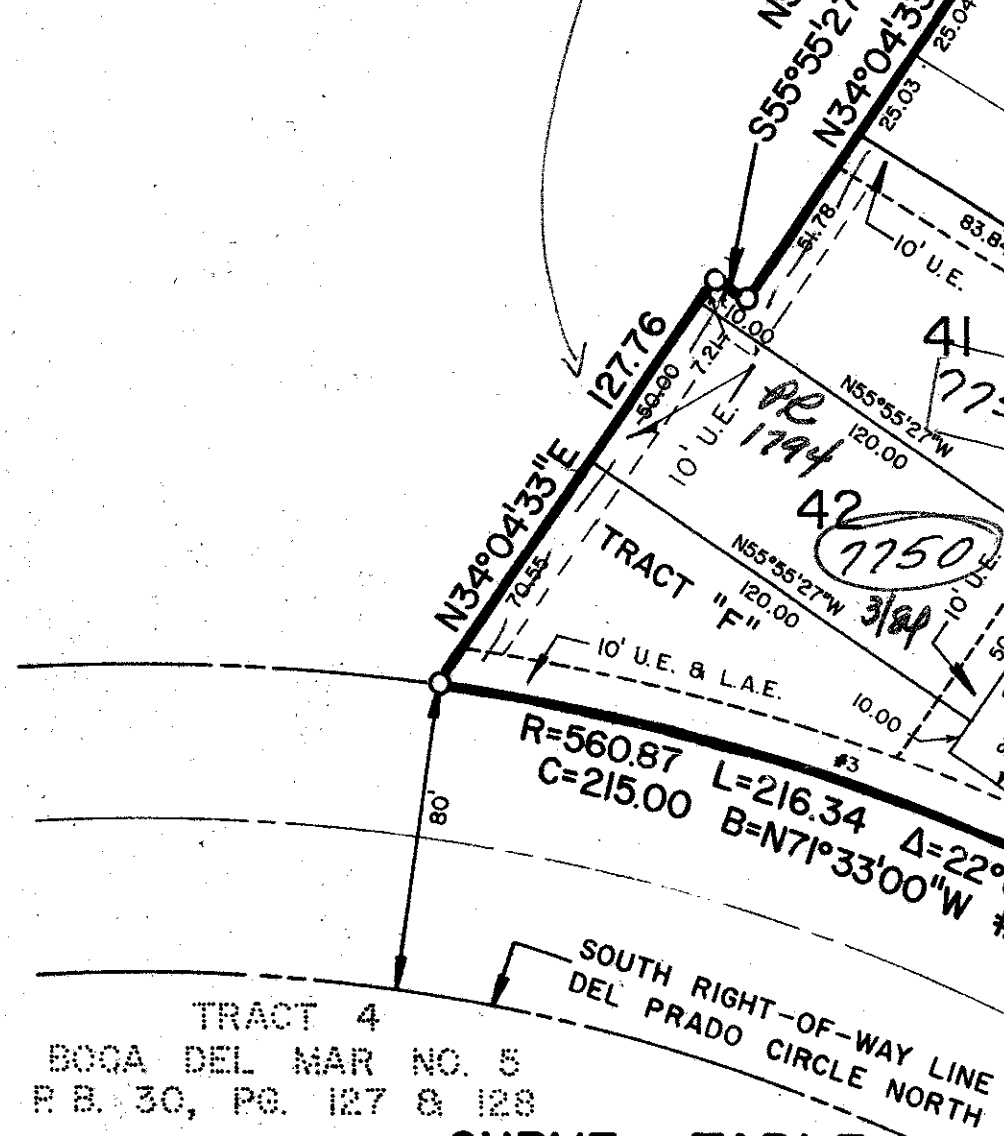
NOTES:

- P.R.M. Indicates Permanent Reference Monument.
- P.C.P. Indicates Permanent Control Point.
- U.E. Indicates Utility Easement.
- D.E. Indicates Drainage Easement.
- L.A.E. Indicates Limited Access Easement.

This will be no building, tree, or shrub placed on drainage and utility easements.

Bearings shown hereon are based on bearings recorded by BOCA DEL MAR NO. 5 in Plat Book 30, Pages 127 and 128, Public Records of Palm Beach County, Florida.

PORTION OF TRACT 1
 BOCA DEL MAR NO. 5
 P.B. 30, PG. 127 & 128



CURVE TABLE

NUMBER	RADIUS	ARC	DELTA	CHORD	CHORD-BEARING
1	700.00	170.80	013°58'50"	170.38	S07°20'35"E
1-1		44.36	003°37'51"	44.35	S02°10'05"E
1-2		50.00	004°05'33"	49.99	S06°01'47"E
1-3		50.00	004°05'33"	49.99	S10°07'20"E
1-4		26.44	002°09'53"	26.44	S13°15'03"E
2	1105.92	846.07	043°50'00"	825.59	N82°25'00"W
2-1		424.14	021°58'27"	421.55	S86°59'14"W
2-2		64.15	003°19'24"	64.14	N80°41'51"W
2-3		69.63	003°36'26"	69.61	N77°13'56"W
2-4		10.37	000°32'15"	10.37	N75°09'36"W
2-5		277.78	014°23'28"	277.05	N67°41'44"W
28-5	990.92	9.91	000°34'23"	9.91	N74°32'37"W
39	1090.92	386.84	020°19'02"	384.82	S87°45'26"W
39-1		59.20	003°06'33"	59.19	S79°09'12"W
39-2		52.41	002°45'10"	52.41	S82°05'03"W
39-3		55.05	002°53'28"	55.04	S84°54'22"W
39-4		55.05	002°53'28"	55.04	S87°47'50"W
39-5		55.04	002°53'27"	55.04	N89°18'42"W
39-6		55.05	002°53'28"	55.04	N86°25'15"W
39-7		55.04	002°53'28"	55.04	N83°31'47"W
40	1090.92	274.01	014°23'28"	273.29	N67°41'44"W
3	560.87	216.34	022°06'00"	215.00	N71°33'00"W
4	106.38	63.93	034°25'43"	62.97	N16°51'41"E
5	50.00	090°00'00"	70.71	N44°38'50"E	
6	637.26	99.80	008°58'21"	99.69	S85°51'59"E
7	657.93	206.07	017°56'42"	205.22	N89°38'50"E
8	637.26	99.79	008°58'21"	99.69	N85°09'40"E
9	50.00	78.54	090°00'00"	70.71	S45°21'10"E
10	610.00	148.84	013°58'50"	148.48	S07°20'35"E
11	50.00	78.54	090°00'00"	70.71	S30°40'00"W
12	280.00	48.22	009°52'00"	48.16	S70°44'00"W
13	155.00	48.69	018°00'00"	48.49	S74°48'00"W
14	965.92	554.19	032°52'23"	546.62	N79°45'48"W
14-1		303.25	017°59'16"	302.00	N87°12'22"W
14-2		250.94	014°53'07"	250.24	N70°46'10"W
15	280.00	83.45	017°04'37"	83.14	N54°47'18"W
16	210.00	46.07	012°34'14"	45.98	N52°32'07"W
17	990.92	241.96	013°59'26"	241.36	S89°12'17"E
17-1		47.83	002°45'57"	47.83	S83°35'33"E
17-2		50.00	002°53'28"	49.99	S86°25'15"E
17-3		50.00	002°53'27"	49.99	S89°18'42"E
17-4		50.00	002°53'28"	49.99	N87°47'50"E
17-5		44.13	002°33'06"	44.13	N85°04'33"E
18	180.00	56.55	018°00'00"	56.32	N74°48'00"E
18-1		5.87	001°52'07"	5.87	N82°51'57"E
18-2		50.68	016°07'53"	50.51	N73°51'57"E

CURVE TABLE

NUMBER	RADIUS	ARC	DELTA	CHORD	CHORD-BEARING
19	255.00	43.91	009°52'00"	43.86	N70°44'00"E
19-1		9.37	002°06'17"	9.37	N66°51'08"E
19-2		34.54	007°45'43"	34.52	N71°47'09"E
20	585.00	142.74	013°58'50"	142.39	N07°20'35"W
20-1		37.36	003°39'34"	37.36	N12°50'13"W
20-2		52.57	005°08'54"	52.55	N08°05'59"W
20-3		50.07	004°54'14"	50.06	N03°04'25"W
20-4		2.74	000°16'08"	2.74	N00°29'14"W
21	662.26	103.71	008°58'21"	103.61	S85°09'40"W
21-1		45.03	003°53'46"	45.03	S87°41'57"W
21-2		50.39	004°21'05"	50.28	S83°34'32"W
21-3		8.38	000°43'30"	8.38	S81°02'14"W
21-4		198.23	017°56'42"	197.43	S89°38'50"W
21-5		42.03	003°48'20"	42.03	S82°34'39"W
21-6		50.08	004°32'00"	50.06	S86°44'49"W
21-7		50.03	004°31'45"	50.02	N88°43'18"W
21-8		50.31	004°33'14"	50.29	N84°10'49"W
21-9		5.78	008°58'21"	5.78	N81°38'30"W
21-10		103.61	008°58'21"	103.61	N85°51'59"W
21-11		44.62	003°18'39"W	44.62	N83°18'39"W
21-12		50.07	004°19'57"	50.07	N87°24'29"W
21-13		9.00	000°46'43"	9.00	N89°57'48"W
21-14		106.07	004°38'50"W	106.07	S44°38'50"W
21-15		22.41	001°31'14"W	22.41	S81°03'14"W
21-16		52.55	001°57'04"W	52.55	S15°57'04"W
21-17		41.09	015°32'41"W	41.09	S15°32'41"W
21-18		48.17	016°51'42"W	48.17	S16°51'42"W
21-19		12.74	004°08'16"W	12.74	S04°08'16"W
21-20		35.85	021°21'08"W	35.85	S21°21'08"W
21-21		40.51	022°32'07"E	40.51	S22°32'07"E
21-22		31.61	009°47'27"	31.57	S53°55'30"E

CURVE TABLE

NUMBER	RADIUS	ARC	DELTA	CHORD	CHORD-BEARING
22	1090.92	55.05	002°53'28"	55.04	N73°26'44"W
22-1		55.05	002°53'28"	55.04	N70°33'16"W
22-2		55.04	002°53'28"	55.04	N67°39'48"W
22-3		55.04	002°53'27"	55.04	N64°46'20"W
22-4		53.82	002°49'37"	53.82	N61°54'48"W
22-5		185.00	002°46'47"	8.97	S47°38'23"E
22-6		305.00	017°04'37"	90.57	S84°47'18"E
22-7		41.93	007°52'56"	41.93	S50°11'28"E
22-8		48.89	009°11'41"	48.89	S58°43'46"E
22-9		198.61	011°30'11"	198.61	S69°04'42"E
22-10		49.99	002°53'27"	49.99	S64°46'20"E
22-11		49.99	002°53'28"	49.99	S67°39'48"E
22-12		50.00	002°53'28"	49.99	S70°33'16"E
22-13		39.03	002°15'25"	39.03	S73°07'42"E
22-14		78.94	034°25'43"	77.76	N16°51'41"E
22-15		28.96	012°37'52"	28.90	N27°45'37"E
22-16		49.68	021°47'51"	49.68	N10°32'46"E
22-17		95.88	008°58'21"	95.78	S85°51'59"E
22-18		40.03	003°44'45"	40.02	S88°28'47"E
22-19		50.30	004°42'26"	50.28	S84°51'12"E
22-20		5.55	000°31'10"	5.55	S81°38'24"E
22-21		213.90	017°56'42"	213.02	N89°38'50"E
22-22		83.89	007°02'33"	83.89	S84°54'05"E
22-23		50.01	004°11'45"	50.00	N89°28'46"E
22-24		50.15	004°12'29"	50.15	N85°16'39"E
22-25		29.78	002°49'55"	29.78	N81°55'27"E
22-26		95.88	008°58'21"	95.78	N85°09'40"E
22-27		20.69	012°34'14"	20.69	N81°38'34"E
22-28		50.18	004°41'46"	50.17	N84°57'32"E

CURVE TABLE

NUMBER	RADIUS	ARC	DELTA	CHORD	CHORD-BEARING
23	635.00	25.01	002°20'25"	25.01	N88°28'38"E
23-1		154.56	013°58'50"	154.56	S07°20'35"E
23-2		52.46	009°52'00"	52.46	S70°44'00"W
23-3		52.46	009°52'00"	52.46	S74°48'00"W
23-4		52.46	009°52'00"	52.46	S74°48'00"W
23-5		52.46	009°52'00"	52.46	S74°48'00"W
23-6		52.46	009°52'00"	52.46	S74°48'00"W
23-7		52.46	009°52'00"	52.46	S74°48'00"W
23-8		52.46	009°52'00"	52.46	S74°48'00"W
23-9		52.46	009°52'00"	52.46	S74°48'00"W
23-10		52.46	009°52'00"	52.46	S74°48'00"W
23-11		52.46	009°52'00"	52.46	S74°48'00"W
23-12		52.46	009°52'00"	52.46	S74°48'00"W
23-13		52.46	009°52'00"	52.46	S74°48'00"W
23-14		52.46	009°52'00"	52.46	S74°48'00"W
23-15		52.46	009°52'00"	52.46	S74°48'00"W
23-16		52.46	009°52'00"	52.46	S74°48'00"W
23-17		52.46	009°52'00"	52.46	S74°48'00"W
23-18		52.46	009°52'00"	52.46	S74°48'00"W
23-19		52.46	009°52'00"	52.46	S74°48'00"W
23-20		52.46	009°52'00"	52.46	S74°48'00"W
23-21		52.46	009°52'00"	52.46	S74°48'00"W
23-22		52.46	009°52'00"	52.46	S74°48'00"W
23-23		52.46	009°52'00"	52.46	S74°48'00"W
23-24		52.46	009°52'00"	52.46	S74°48'00"W
23-25		52.46	009°52'00"	52.46	S74°48'00"W
23-26		52.46	009°52'00"	52.46	S74°48'00"W
23-27		52.46	009°52'00"	52.46	S74°48'00"W
23-28		52.46	009°52'00"	52.46	S74°48'00"W
23-29		52.46	009°52'00"	52.46	S74°48'00"W
23-30		52.46	009°52'00"	52.46	S74°48'00"W
23-31		52.46	009°52'00"	52.46	S74°48'00"W
23-32		52.46	009°52'00"	52.46	S74°48'00"W
23-33		52.46	009°52'00"	52.46	S74°48'00"W
23-34		52.46	009°52'00"	52.46	S74°48'00"W
23-35		52.46	009°52'00"	52.46	S74°48'00"W
23-36		52.46	009°52'00"	52.46	S74°48'00"W
23-37		52.46	009°52'00"	52.46	S74°48'00"W
23-38		52.46	009°52'00"	52.46	S74°48'00"W
23-39		52.46	009°52'00"	52.46	S74°48'00"W
23-40		52.46	009°52'00"	52.46	S74°48'00"W
23-41		52.46	009°52'00"	52.46	S74°48'00"W
23-42		52.46	009°52'00"	52.46	S74°48'00"W
23-43		52.46	009°52'00"	52.46	S74°48'00"W
23-44		52.46	009°52'00"	52.46	S74°48'00"W
23-45		52.46	009°52'00"	52.46	S74°48'00"W
23-46		52.46	009°52'00"	52.46	S74°48'00"W
23-47		52.46	009°52'00"	52.46	S74°48'00"W
23-48		52.46	009°52'00"	52.46	S74°48'00"W
23-49		52.46	009°52'00"	52.46	S74°48'00"W
23-50		52.46	009°52'00"	52.46	S74°48'00"W
23-51		52.46	009°52'00"	52.46	S74°48'00"W
23-52		52.46	009°52'00"	52.46	S74°48'00"W
23-53		52.46	009°52'00"	52.46	S74°48'00"W
23-54		52.46	009°52'00"	52.46	S74°48'00"W
23-55		52.46	009°52'00"	52.46	S74°48'00"W
2					