

45/38

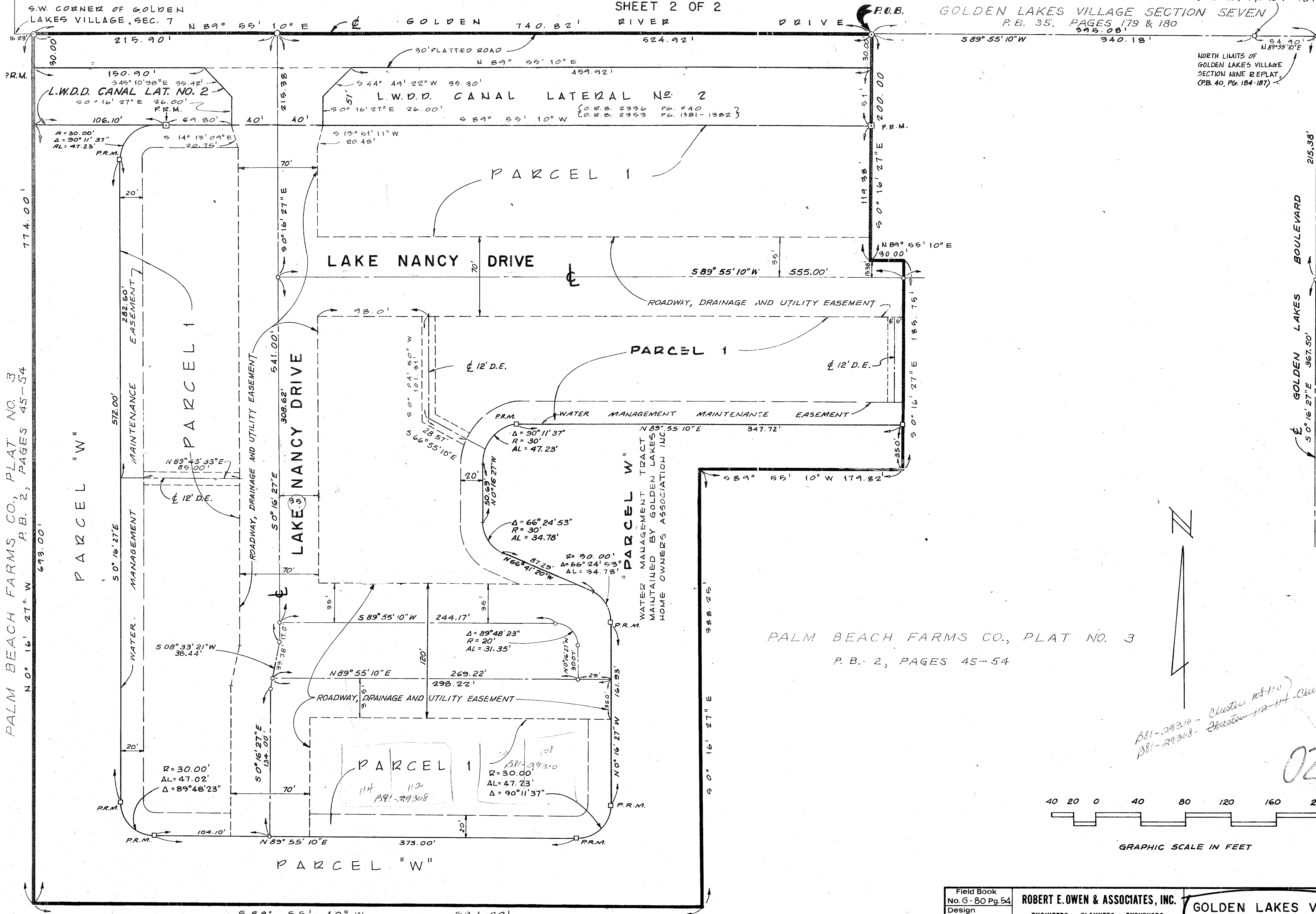
A PLANNED UNIT DEVELOPMENT

# GOLDEN LAKES VILLAGE SECTION ELEVEN

SHEET 2 OF 2

NORTHWEST CORNER OF GOLDEN LAKES VILLAGE SECTION NINE REPLAT (P.B. 40, Pp. 184-187)

38



PALM BEACH FARMS CO., PLAT NO. 3  
P.B. 2, PAGES 45-54

GOLDEN LAKES VILLAGE SECTION SEVEN  
P.B. 35, PAGES 179 & 180

NORTH LIMITS OF GOLDEN LAKES VILLAGE SECTION NINE REPLAT (P.B. 40, Pp. 184-187)

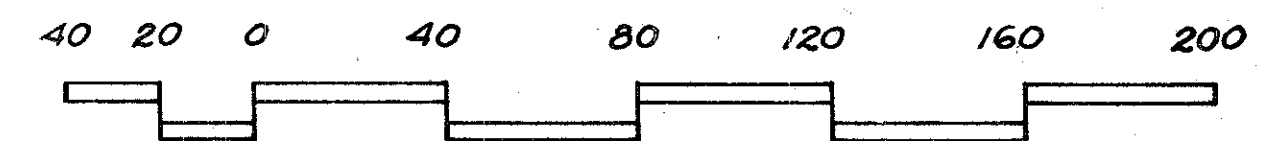
GOLDEN LAKES BOULEVARD

GOLDEN LAKES VILLAGE SECTION NINE REPLAT  
P.B. 40, PAGES 184-187

PALM BEACH FARMS CO., PLAT NO. 3  
P.B. 2, PAGES 45-54

Cluster 108-110  
Cluster 112-114  
Cluster #7

0251-302



GRAPHIC SCALE IN FEET

PALM BEACH FARMS CO., PLAT NO. 3  
P.B. 2, PAGES 45-54

45/38

Field Book No. G-80 Pg. 54	ROBERT E. OWEN & ASSOCIATES, INC. ENGINEERS · PLANNERS · SURVEYORS WEST PALM BEACH FLORIDA	GOLDEN LAKES VILLAGE SECTION ELEVEN	Job No. 80-1138
Design R. BIBY			Scale 1" = 40'
Drawn A. FIELD			Date JAN. 1982
Checked			Sheet 2 of 2
		SHEET 2 OF 2 SHEETS	File No. BF-2319-B