

46/26

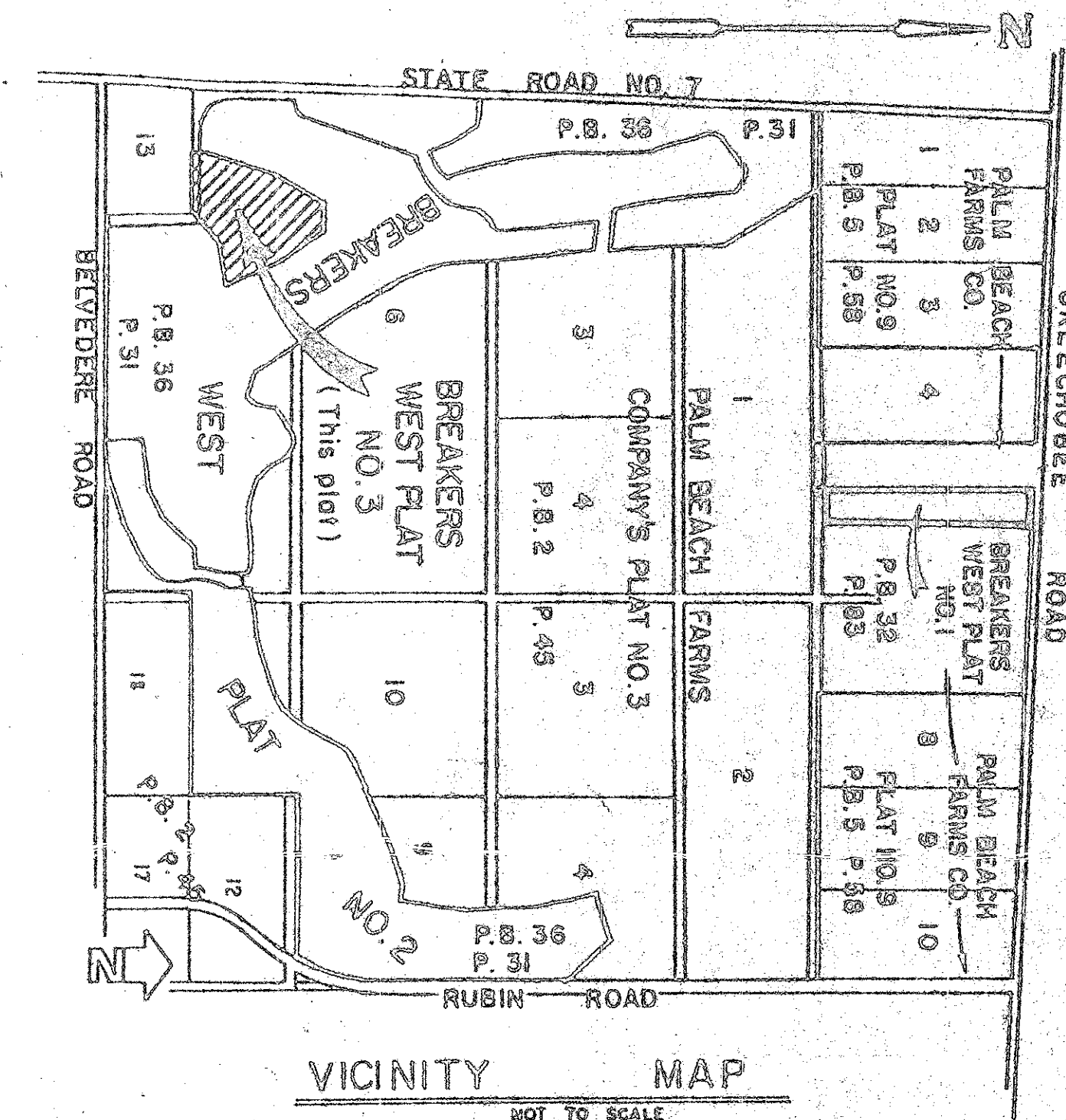
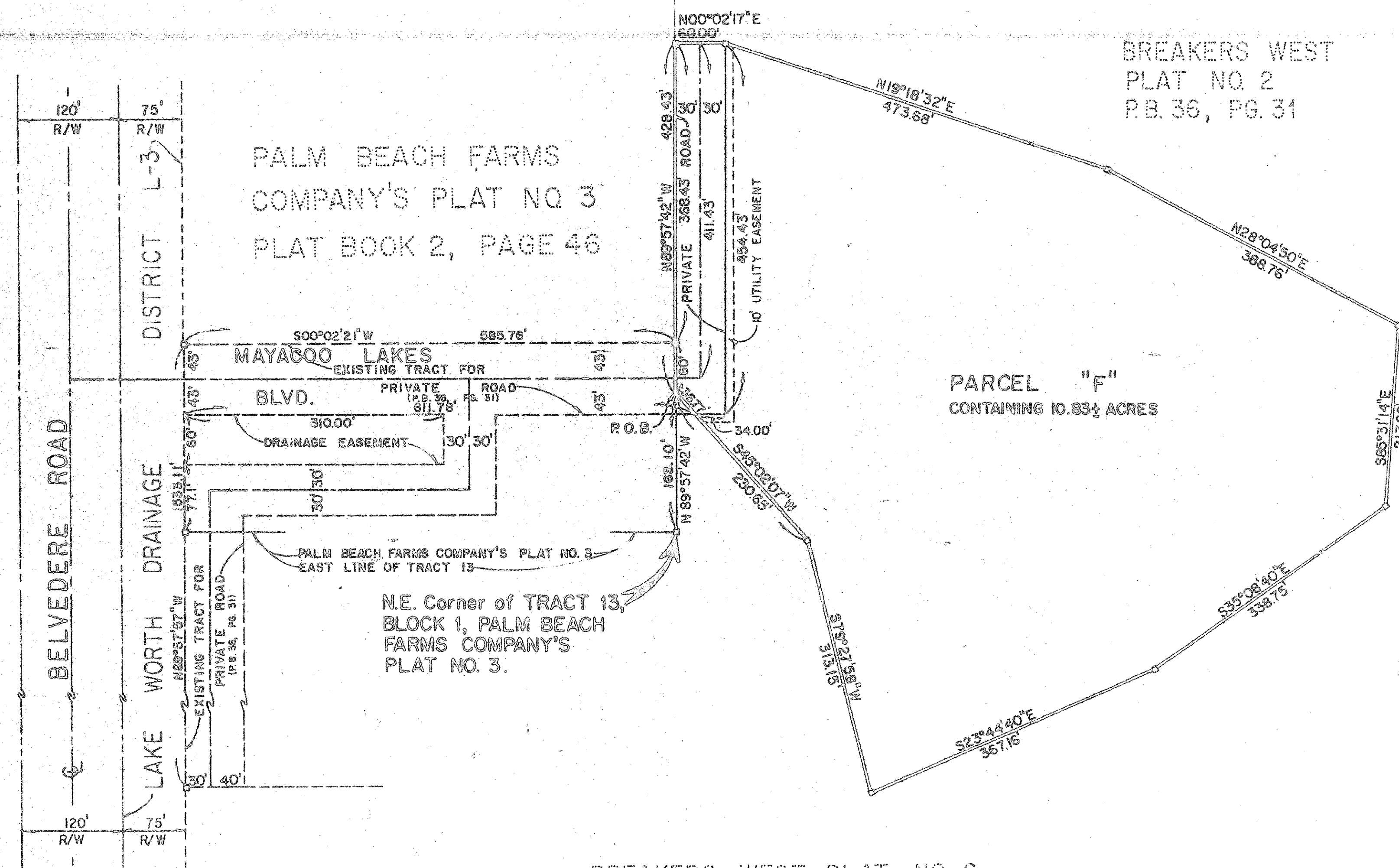
26

"A PLANNED UNIT DEVELOPMENT" BREAKERS WEST PLAT NO. 3

PALM BEACH COUNTY, FLORIDA

SHEET 2 OF 2 SHEETS

HUTCHEON ENGINEERS
INCORPORATED
CIVIL ENGINEERS & SURVEYORS
BELLE GLADE WEST PALM BEACH STUART



BREAKERS WEST PLAT NO. 2
PLAT BOOK 36, PAGE 31

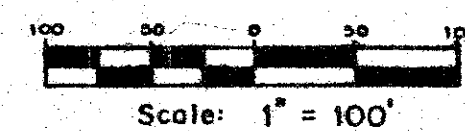
BREAKERS WEST
PLAT NO. 2
P.B. 36, PG. 31

DESCRIPTION OF PARCEL "F"

Commencing at the Northeast corner of Tract 13, Block 1, Palm Beach Farms Company's Plat No. 3, as recorded in Plat Book 2, Page 46 of the Public Records of Palm Beach County; thence run N. 89°57'42" W. along the North line of said Tract 13 for a distance of 163.10 feet to the Point of Beginning of the following described parcel; thence continue N. 89°57'42" W. a distance of 428.43 feet thence N. 00°02'17" E. a distance of 60.00 feet thence N. 19°18'32" E. a distance of 473.68 feet thence N. 28°04'50" E. a distance of 388.76 feet thence S. 85°31'14" E. a distance of 217.66 feet thence S. 35°08'40" E. a distance of 338.75 feet thence S. 23°44'40" E. a distance of 367.16 feet thence S. 79°27'58" W. a distance of 313.15 feet thence S. 45°02'07" W. a distance of 230.65 feet to the Point of Beginning.

SURVEYORS NOTES:

- Easements:
 - No buildings or any other structures shall be placed in utility or drainage easements.
 - No structures, trees or shrubs shall be placed on drainage easements.
 - Approval of landscaping on utility easements other than water and sewer shall be only with the approval of all utilities occupying same.
- Bearings shown hereon are based on an assumed bearing on N. 89°57'43" W. for the north line of Tract 13, Block 1, Palm Beach Farms Company's Plat No. 3.
- Total Acreage = 10.83
Total Dwelling Units = 123
Net Density/Acre = 11.35 Dwelling Units



- LEGEND**
- - DENOTES SET P. R. M. (PERMANENT REFERENCE MONUMENT)
 - - DENOTES FOUND P. R. M. (PERMANENT REFERENCE MONUMENT) #RLS NO. 1413
 - - DENOTES SET P. C. P. (PERMANENT CONTROL POINT)
 - (R) - DENOTES RADIAL LINE
 - U.E. - DENOTES UTILITIES EASEMENT

0217-303

BREAKERS WEST #3 45/26