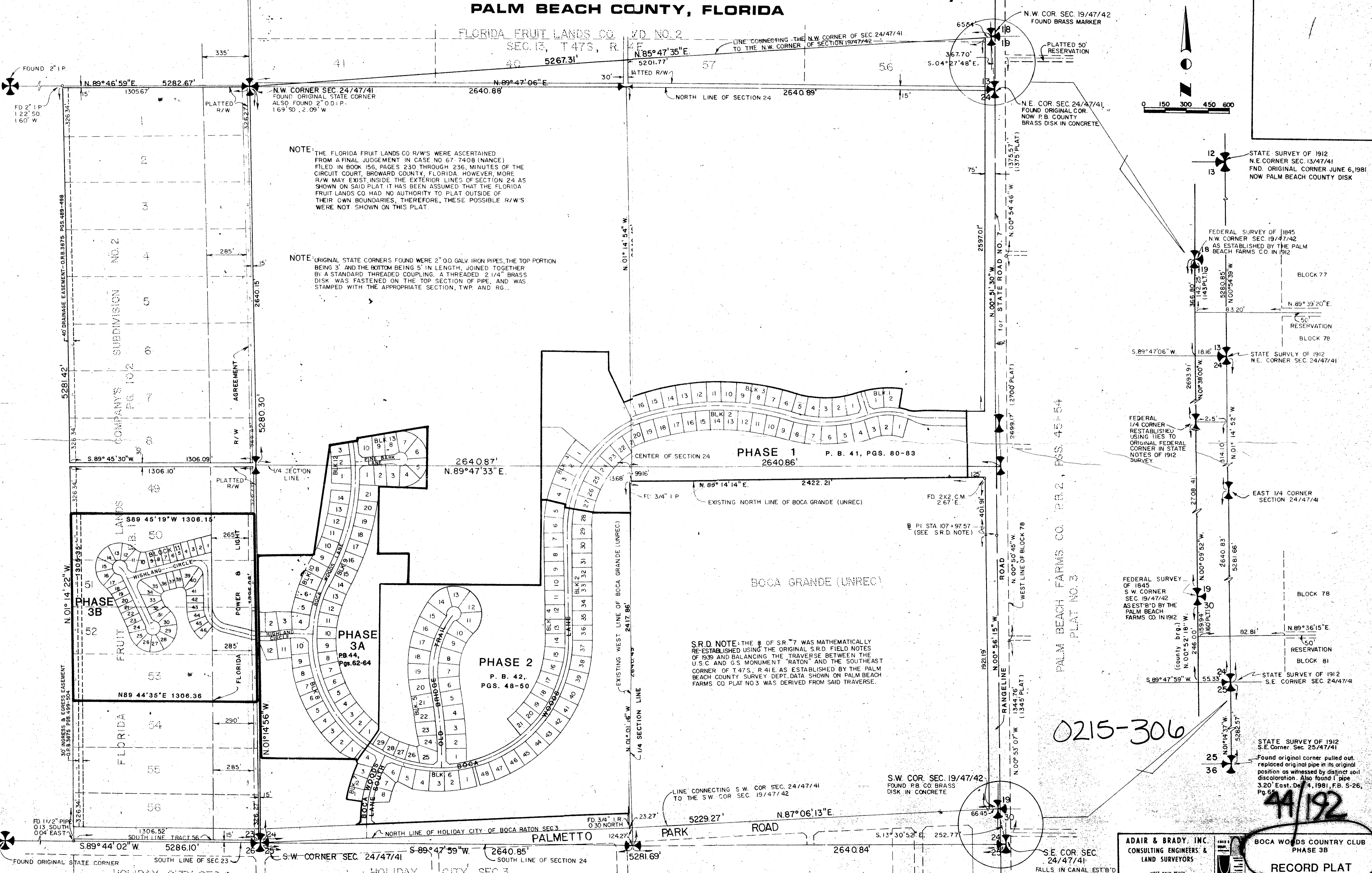


44/192

BOCA WOODS COUNTRY CLUB

192

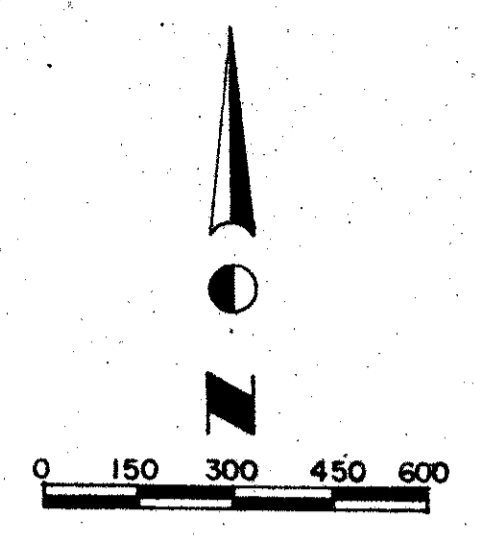
PHASE 3B, A PLANNED UNIT DEVELOPMENT
IN SECTIONS 23 AND 24, TOWNSHIP 47 SOUTH, RANGE 41 EAST,
PALM BEACH COUNTY, FLORIDA



NOTE: THE FLORIDA FRUIT LANDS CO R/W'S WERE ASCERTAINED FROM A FINAL JUDGEMENT IN CASE NO. 67,740 (NANCE) FILED IN BOOK 156, PAGES 230 THROUGH 236, MINUTES OF THE CIRCUIT COURT, BROWARD COUNTY, FLORIDA. HOWEVER, MORE R/W MAY EXIST INSIDE THE EXTERIOR LINES OF SECTION 24 AS SHOWN ON SAID PLAT IT HAS BEEN ASSUMED THAT THE FLORIDA FRUIT LANDS CO HAD NO AUTHORITY TO PLAT OUTSIDE OF THEIR OWN BOUNDARIES. THEREFORE, THESE POSSIBLE R/W'S WERE NOT SHOWN ON THIS PLAT.

NOTE: ORIGINAL STATE CORNERS FOUND WERE 2" O.D. GALV. IRON PIPES, THE TOP PORTION BEING 3" AND THE BOTTOM BEING 5" IN LENGTH, JOINED TOGETHER BY A STANDARD THREADED COUPLING, A THREADED 2 1/4" BRASS DISK WAS FASTENED ON THE TOP SECTION OF PIPE, AND WAS STAMPED WITH THE APPROPRIATE SECTION, TWP. AND RG.

S.R.D. NOTE: THE B OF S.R. 7 WAS MATHEMATICALLY RE-ESTABLISHED USING THE ORIGINAL S.R.D. FIELD NOTES OF 1939 AND BALANCING THE TRAVERSE BETWEEN THE U.S.C. AND G.S. MONUMENT 'RATON' AND THE SOUTHEAST CORNER OF T.47S., R.41E. AS ESTABLISHED BY THE PALM BEACH COUNTY SURVEY DEPT. DATA SHOWN ON PALM BEACH FARMS CO PLAT NO. 3 WAS DERIVED FROM SAID TRAVERSE.



ADAIR & BRADY, INC.
CONSULTING ENGINEERS &
LAND SURVEYORS

WEST PALM BEACH

DR. LJS FEB. 25 SCALE 1" = 300'

CHK. d.p. M-26 DATE FEB. 1982

APPR. J.A. B.W.I. JOB NO. 8528N

BOCA WOODS COUNTRY CLUB
PHASE 3B

RECORD PLAT

FP 1156 OF 3

0215-306

44/192