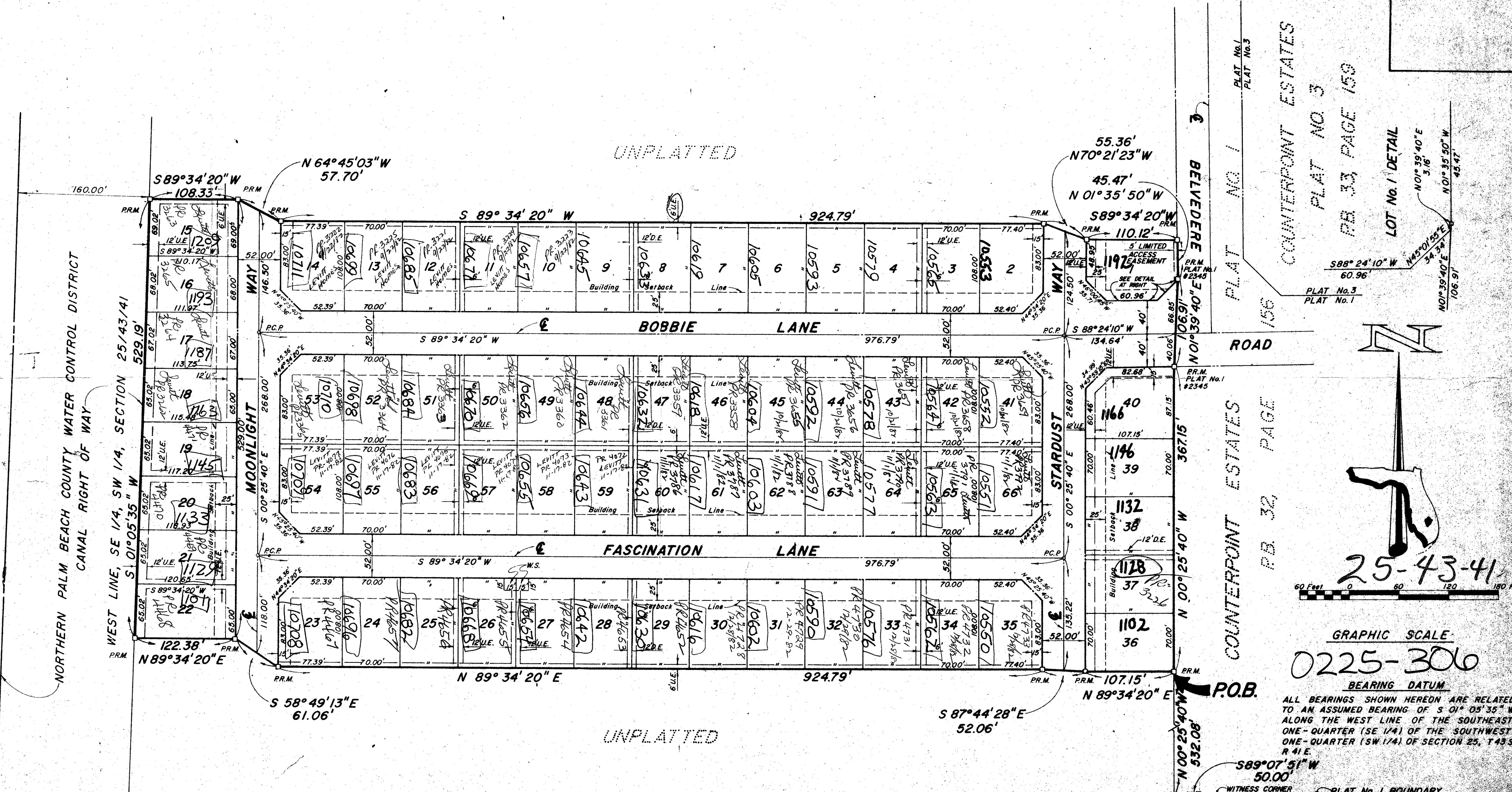


COUNTERPOINT ESTATES PLAT No. 7

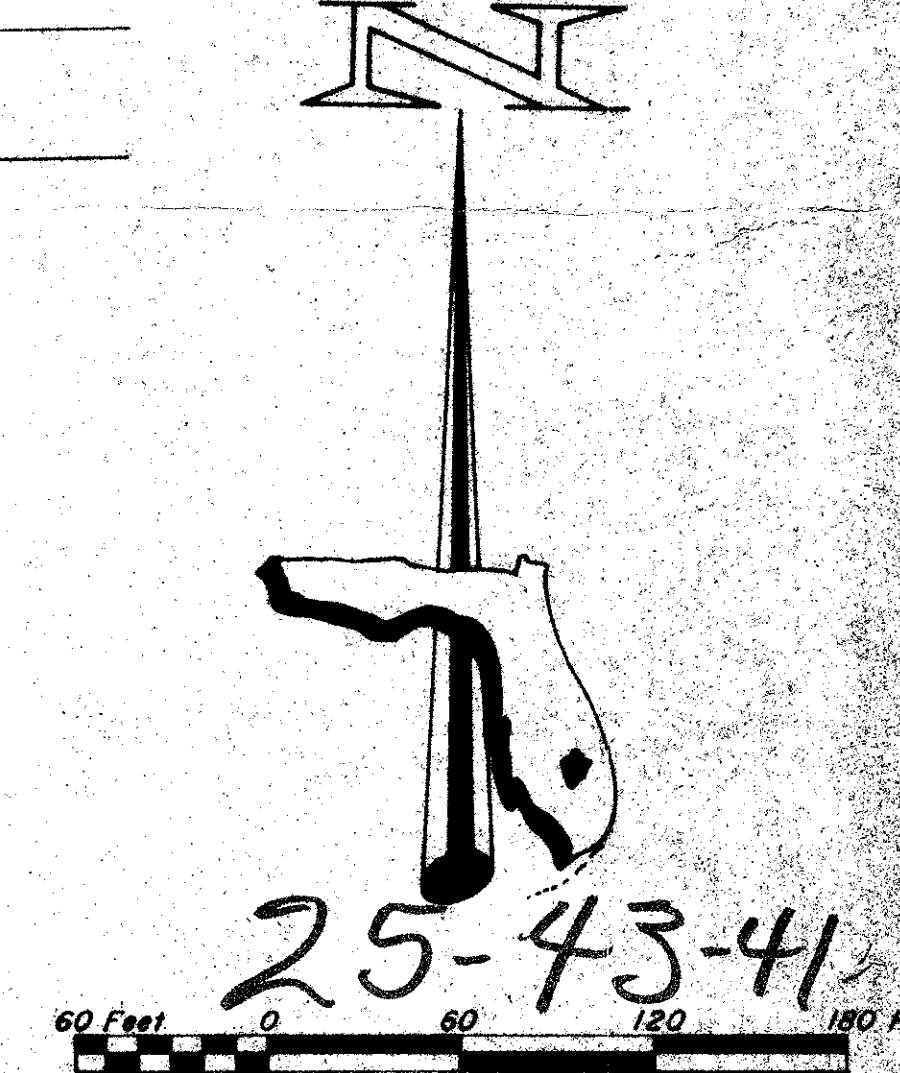
IN SECTION 25, TOWNSHIP 43 SOUTH, RANGE 41 EAST, PALM BEACH COUNTY, FLORIDA

150

44/150



LOT No. 1 DETAIL
 N 01° 39' 40" E 45.47'
 N 01° 39' 40" W 106.91'
 S 88° 24' 10" W 60.96'
 N 01° 39' 40" E 3.16'
 N 01° 39' 40" W 106.91'



LEGEND

U.E. INDICATES POWER AND/OR TELEPHONE EASEMENT
 D.E. INDICATES DRAINAGE EASEMENT
 W.S. INDICATES WATER AND/OR SANITARY SEWER EASEMENT
 P.C.P. INDICATES PERMANENT CONTROL POINT
 P.R.M. INDICATES PERMANENT REFERENCE MONUMENT

- SURVEYOR'S NOTES**
1. NO BUILDINGS OR ANY KIND OF CONSTRUCTION SHALL BE PLACED ON UTILITY OR DRAINAGE EASEMENTS.
 2. NO STRUCTURES, TREES OR SHRUBS SHALL BE PLACED ON DRAINAGE EASEMENTS.
 3. APPROVAL OF LANDSCAPING ON UTILITY EASEMENTS OTHER THAN WATER AND SEWER SHALL BE ONLY WITH THE APPROVAL OF ALL UTILITIES OCCUPYING SAME.

SOUTH 1/4 CORNER, SECTION 25, TOWNSHIP 43 SOUTH, RANGE 41 EAST

WITNESS CORNER PLAT No. 1 BOUNDARY

P.O.C. 44/150

FLORIDA SURVEYING & MAPPING, INC.
 REGISTERED LAND SURVEYORS
 WEST PALM BEACH, FLORIDA

COUNTERPOINT ESTATES PLAT No. 7

APPROVED	AS SHOWN	DATE	FILE
		05-19-08	75-44-23

REVISIONS:

NO.	DATE	DESCRIPTION
1	05-19-08	AS SHOWN