

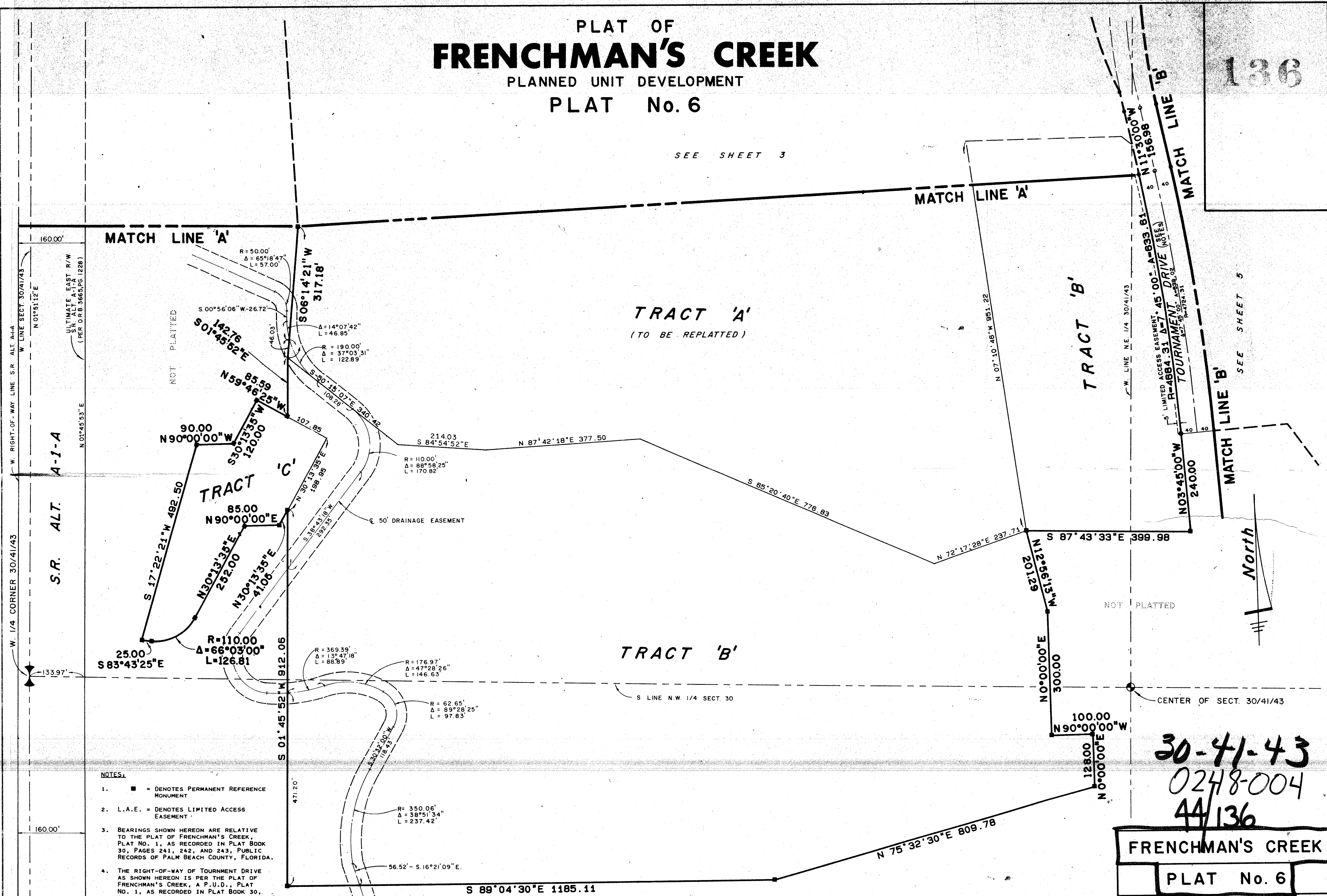
44/136

136

PLAT OF FRENCHMAN'S CREEK

PLANNED UNIT DEVELOPMENT
PLAT No. 6

SEE SHEET 3

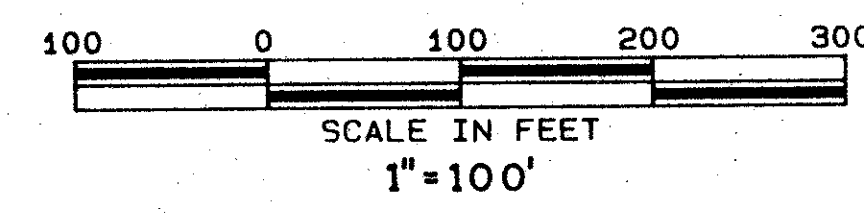


- NOTES:
- = DENOTES PERMANENT REFERENCE MONUMENT
 - L.A.E. = DENOTES LIMITED ACCESS EASEMENT
 - BEARINGS SHOWN HEREON ARE RELATIVE TO THE PLAT OF FRENCHMAN'S CREEK, PLAT NO. 1, AS RECORDED IN PLAT BOOK 30, PAGES 241, 242, AND 243, PUBLIC RECORDS OF PALM BEACH COUNTY, FLORIDA.
 - THE RIGHT-OF-WAY OF TOURNAMENT DRIVE AS SHOWN HEREON IS PER THE PLAT OF FRENCHMAN'S CREEK, A P.U.D., PLAT NO. 1, AS RECORDED IN PLAT BOOK 30, PAGES 241, 242, AND 243, PUBLIC RECORDS OF PALM BEACH COUNTY, FLORIDA.
 - THERE SHALL BE NO BUILDINGS OR STRUCTURES PLACED ON PUBLIC UTILITY EASEMENTS.
 - THERE SHALL BE NO BUILDINGS OR THE PLANTING OF TREES OR SHRUBS ON DRAINAGE EASEMENTS.

30-41-43
0248-004
44/136

FRENCHMAN'S CREEK
PLAT No. 6

WILLIAM G. WALLACE, INC.
CONSULTING ENGINEERS, LAND PLANNERS & SURVEYORS
321 NORTHLAKE BLVD., NO. PALM BEACH, FL. 33408 • 305-842-4233
3241 SW MAPLE RD., PALM CITY PLAZA, PALM CITY, FL. 32909 • 305-283-0300



FIELD:	JOB NO. 82-0296	FB	PG
OFFICE: W.D.J.	DATE: APRIL 1982	DWG NO. 82-0296	
CK'D:	REF:	SHEET 4	OF 5