

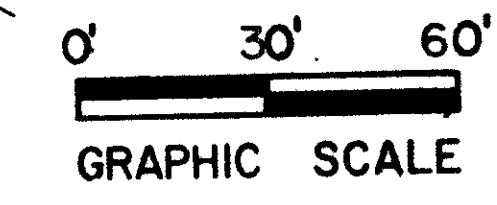
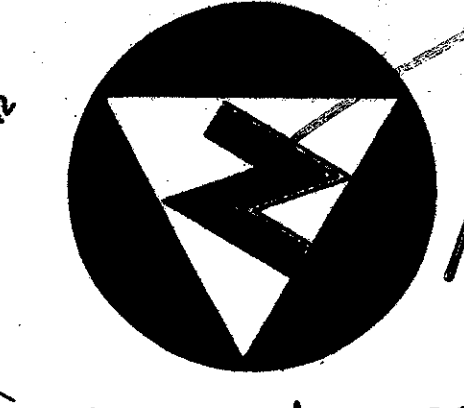
44/105

# BAY WOOD PLAT 2 AT BOCA WEST

LYING IN PART OF SECTION 9, TOWNSHIP 47 SOUTH, RANGE 42 EAST  
PALM BEACH COUNTY, FLORIDA  
MARCH, 1982

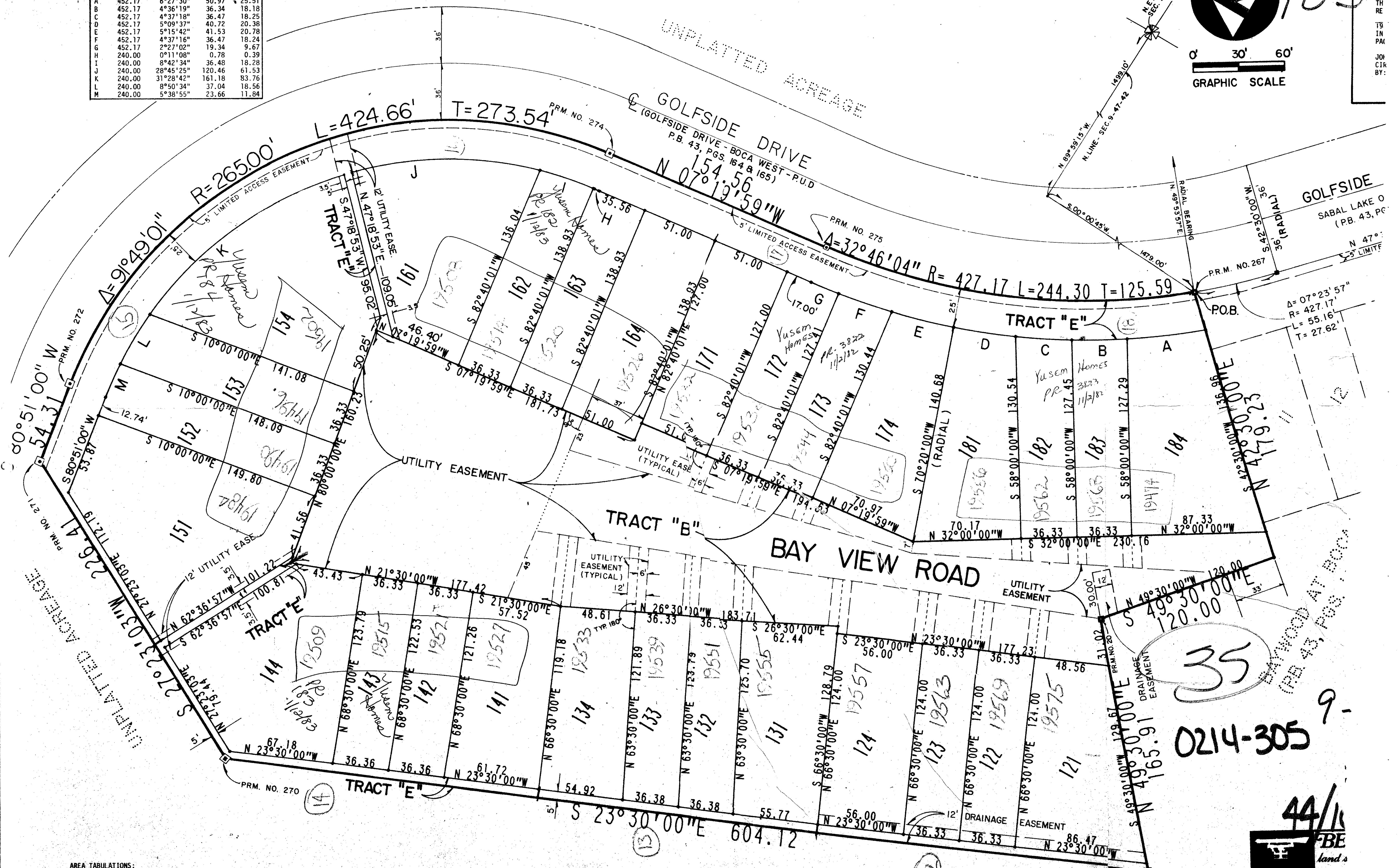
CURVE TABLE

ID	RADIUS	DELTA	ARC LGT.	TAN.
A	452.17	6°27'30"	50.97	25.51
B	452.17	4°36'19"	36.34	18.18
C	452.17	4°37'18"	36.47	18.25
D	452.17	5°09'37"	40.72	20.38
E	452.17	5°15'42"	41.53	20.78
F	452.17	4°37'16"	36.47	18.24
G	452.17	2°27'02"	19.34	9.67
H	240.00	0°11'08"	0.78	0.39
I	240.00	8°42'34"	36.48	18.28
J	240.00	28°45'25"	120.46	61.53
K	240.00	31°28'42"	161.18	83.76
L	240.00	8°50'34"	37.04	18.56
M	240.00	5°38'55"	23.66	11.84



44/105

ST. CC  
TH. RE  
TS. IN  
PA. C  
JOB  
CIR  
BY:



AREA TABULATIONS:

TRACT "B"	1.304 ACRES
TRACT "E"	0.619 ACRE
LOTS	4.263 ACRES
TOTAL BOUNDARY	6.186 ACRES

THIS INSTRUMENT WAS PREPARED BY ROBERT J. WHIDDEN IN THE OFFICES OF BENCH MARK LAND SURVEYING AND MAPPING, INC., 2833 EXCHANGE COURT, WEST PALM BEACH, FLORIDA 33409. PHONE: (305) 689-2114.

DATE	REVISIONS	BY	SCALE	SHEET
			1" = 30'	12

35  
0214-305 9-

