

82447

PLAT NO. V LE CHALET (PART OF A P.U.D.)

IN SECTIONS 14 & 15, TOWNSHIP 45 SOUTH, RANGE 42 EAST

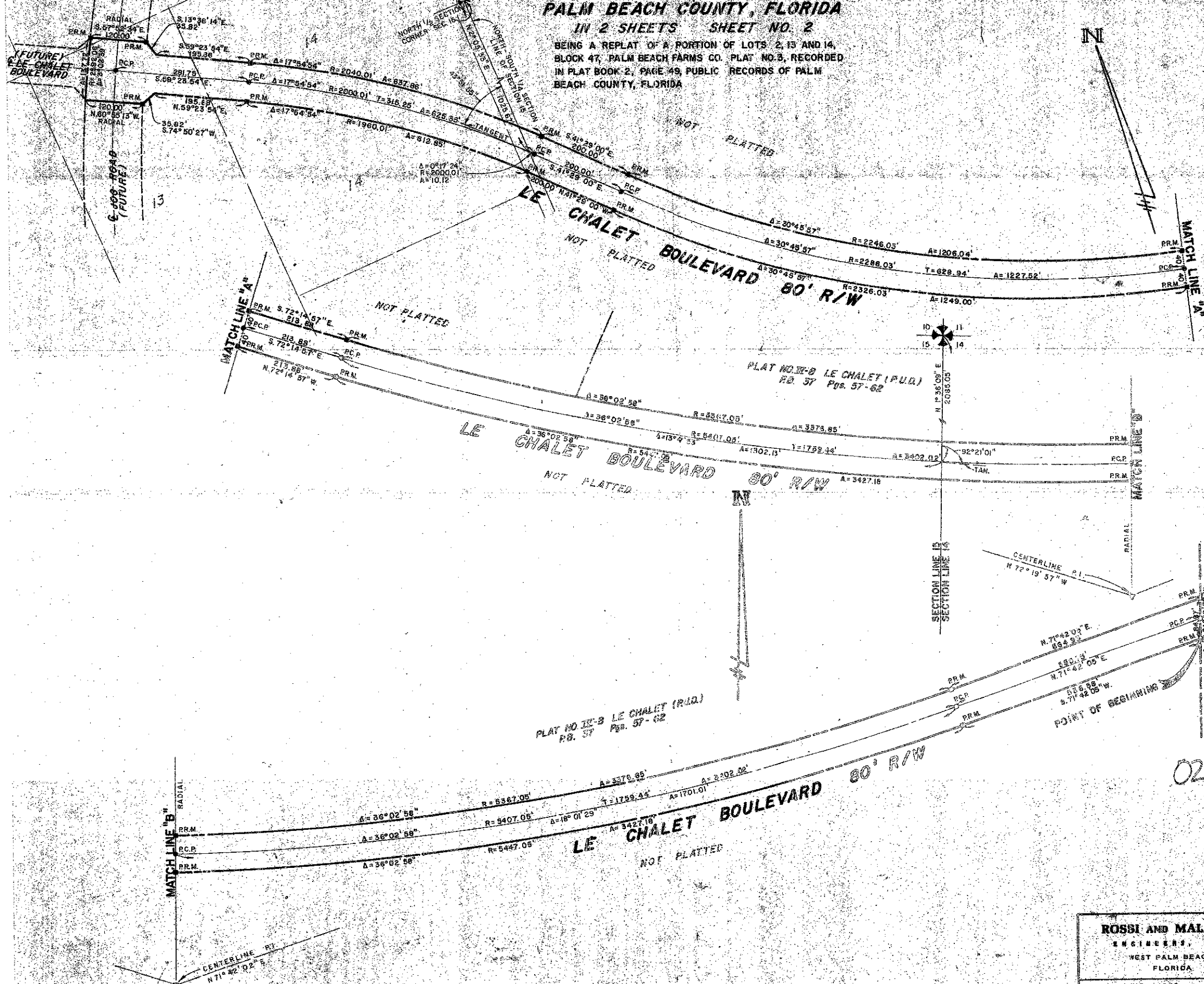
PALM BEACH COUNTY, FLORIDA

IN 2 SHEETS SHEET NO. 2

BEING A REPLAT OF A PORTION OF LOTS 2, 13 AND 14,
BLOCK 47, PALM BEACH FARMS CO. PLAT NO. 3, RECORDED
IN PLAT BOOK 2, PAGE 49, PUBLIC RECORDS OF PALM
BEACH COUNTY, FLORIDA

78

STATE OF FLORIDA
COUNTY OF PALM BEACH
This Plat was filed for record at _____ M.
this _____ day of _____
19____, and duly recorded in Plat Book No. _____
on page _____
JOHN B. DUNKLE, Clerk Circuit Court
By _____, D.C.



0270-304
 11-15-78-72
 F.S. 24
 11/78
 (34)

ROSSI AND MALAVASI ENGINEERS, INC. WEST PALM BEACH, FLORIDA		PLAT NO. V LE CHALET (P.U.D.) IN 2 SHEETS SHEET NO. 2	
Date: JUNE, 1980	Designed: M.P. LOWER	Scale: 1" = 100'	Sheet: 2 of 2
Approved:	Drawn: P. STEVISON	Job No. 4200-F-002	
	Checked:	File No. 57-002	