

44/72

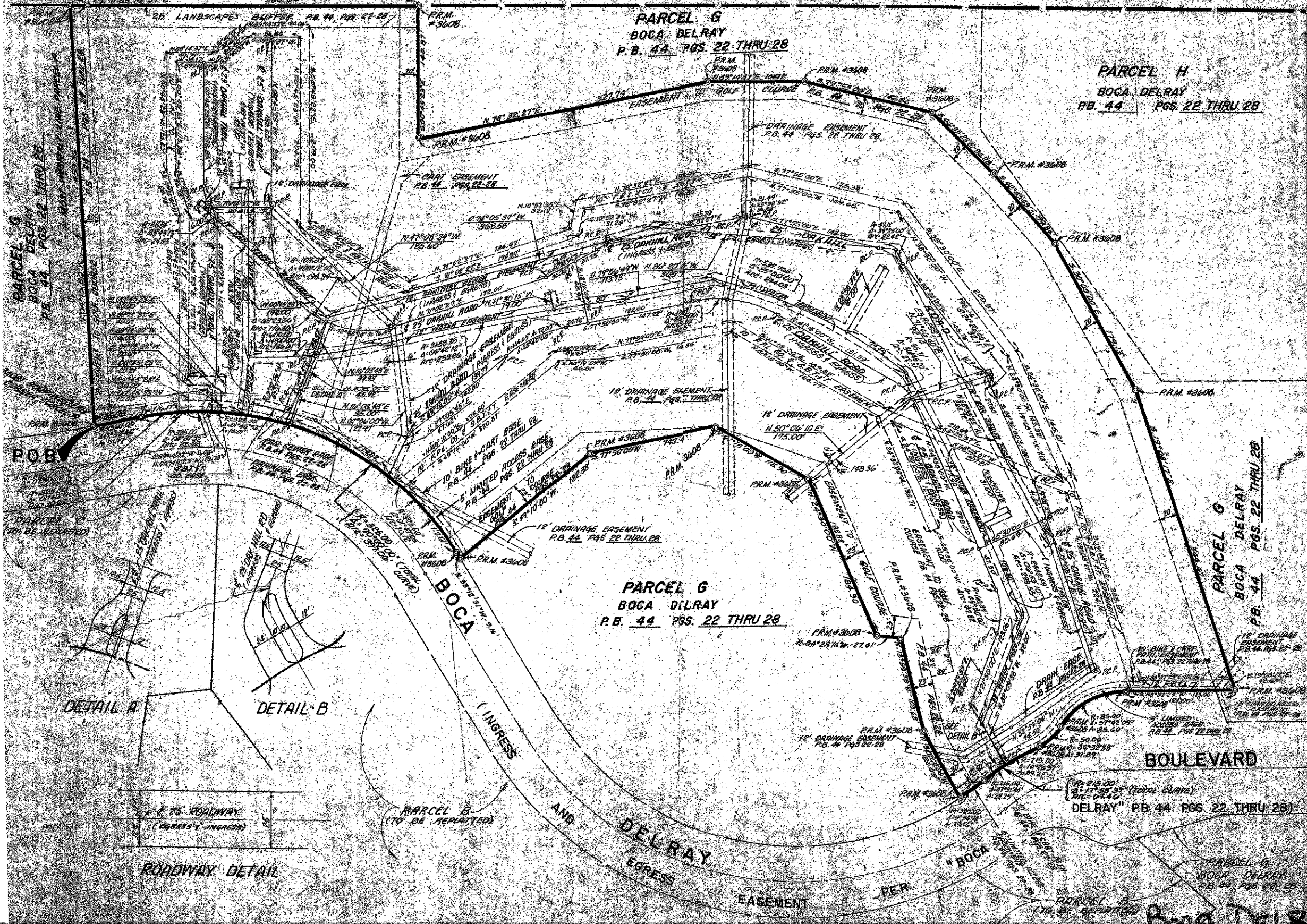
THIS INSTRUMENT PREPARED UNDER THE DIRECTION OF JOHN H. FITSCHEN
GRAVEN THOMPSON & ASSOCIATES, INC.
LAND SURVEYORS-CIVIL ENGINEERS
3974 OKEECHOBEE BOULEVARD,
WEST PALM BEACH, FLORIDA

BOCA DELRAY PARCEL A

A REPLAT OF PARCEL A OF "BOCA DELRAY" AS RECORDED IN PLAT BOOK 44 AT PAGES 22 THRU 28 INCLUSIVE OF THE PUBLIC RECORDS OF PALM BEACH COUNTY, FLORIDA, SITUATED IN SECTION 26, TWP. 46 S., RNG. 42 E., PALM BEACH COUNTY, FL.



72



MILITARY TRAIL (S.R. 809)

0206-301

26-46-92

44/72
BOCA DELRAY PARCEL A