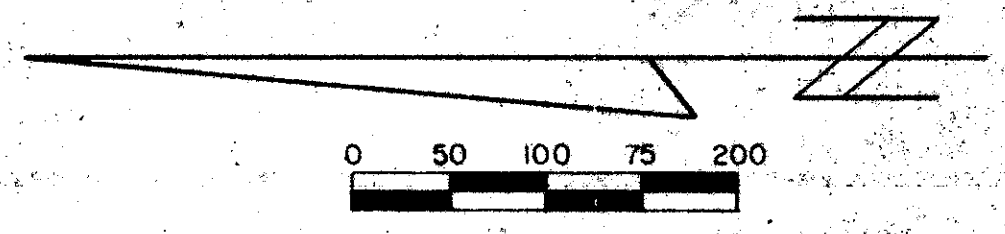


44/64

# BOCA WOODS COUNTRY CLUB PHASE 3A

64

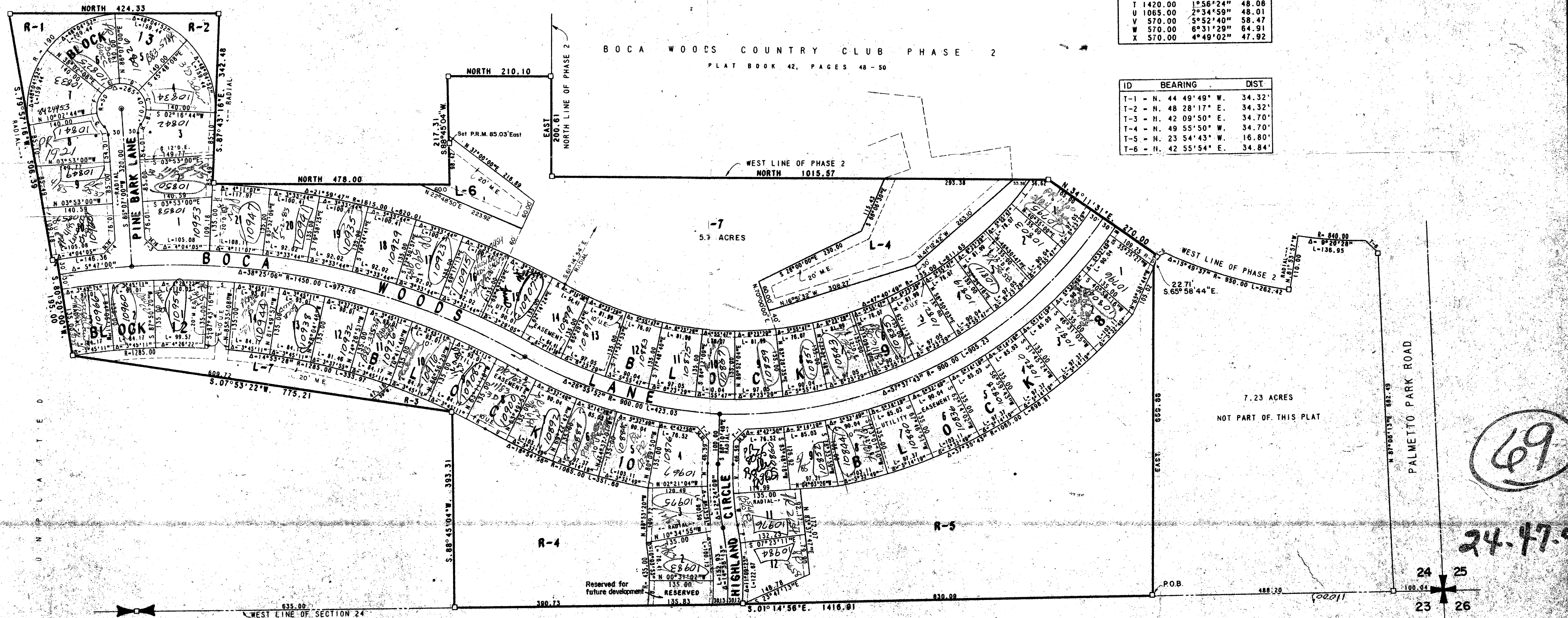
A PLANNED UNIT DEVELOPMENT  
IN SECTION 24, TOWNSHIP 47 SOUTH, RANGE 41 EAST,  
PALM BEACH COUNTY, FLORIDA



UNPLATTED

ID	RADIUS	DELTA	ARC LGT
A	1480.00	0°59'30"	25.62
B	50.00	36°40'16"	32.00
C	50.00	48°04'52"	41.96
D	50.00	48°04'52"	41.96
E	50.00	48°04'52"	41.96
F	50.00	48°04'52"	41.96
G	50.00	36°40'16"	32.00
H	25.00	42°50'00"	18.69
I	25.00	42°50'00"	18.69
J	1480.00	0°22'44"	9.79
K	1615.00	0°59'30"	27.95
L	725.00	4°47'14"	61.41
M	930.00	1°13'56"	20.00
N	630.00	4°10'18"	45.87
O	435.00	6°32'51"	49.71
P	630.00	3°11'44"	35.14
Q	930.00	2°34'59"	41.93
R	1285.00	1°56'24"	43.51
S	1420.00	2°08'08"	52.93
T	1420.00	1°56'24"	48.08
U	1065.00	2°34'59"	48.01
V	570.00	5°52'40"	58.47
W	570.00	6°31'29"	64.91
X	570.00	4°49'02"	47.92

ID	BEARING	DIST
T-1	N. 44 49'49" W.	34.32'
T-2	N. 48 28'17" E.	34.32'
T-3	N. 42 09'50" E.	34.70'
T-4	N. 49 55'50" W.	34.70'
T-5	N. 23 54'43" W.	16.80'
T-6	N. 42 55'54" E.	34.84'



NOTE: THERE SHALL BE NO BUILDINGS OR ANY KIND OF CONSTRUCTION OR TREES OR SHRUBS PLACED ON DRAINAGE OR UTILITY EASEMENTS.  
BEARINGS REFER TO THE STATE PLANE GRID AZIMUTH DATUM AS DETERMINED BY THE PALM BEACH COUNTY SURVEY DEPARTMENT.  
ALL DISTANCES SHOWN ALONG CURVES ARE ARC LENGTHS, AND LINES THAT ARE DRAWN AS RADIAL LINES ARE RADIAL TO THE STREET CENTERLINE UNLESS NOTED OTHERWISE.  
□ - INDICATES PERMANENT REFERENCE MONUMENT  
○ - INDICATES PERMANENT CONTROL POINT  
D. E. - DRAINAGE EASEMENT  
W. E. - WATER MANAGEMENT TRACT MAINTENANCE EASEMENT  
U. E. - UTILITY EASEMENT

FLORIDA FRUIT LANDS COMPANY'S  
SUBDIVISION NO. 2

6.1. P. 102

0215-310  
44/64

F.S.E. 35

ADAIR & BRADY, INC.  
CONSULTING ENGINEERS &  
LAND SURVEYORS

BOCA WOODS COUNTRY CLUB  
PHASE 3A

RECORD PLAT

FP 1156 3 3