

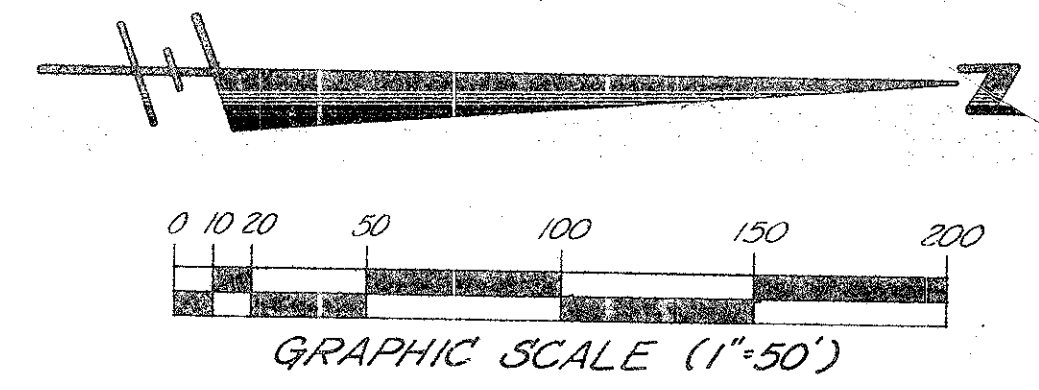
44/27

THIS INSTRUMENT PREPARED UNDER THE
DIRECTION OF JOHN H. FITSCHEN
CRAVEN-THOMPSON & ASSOCIATES, INC.
LAND SURVEYORS · CIVIL ENGINEERS
3974 OKEECHOBEE BOULEVARD,
WEST PALM BEACH, FLORIDA

BOCA DELRAY

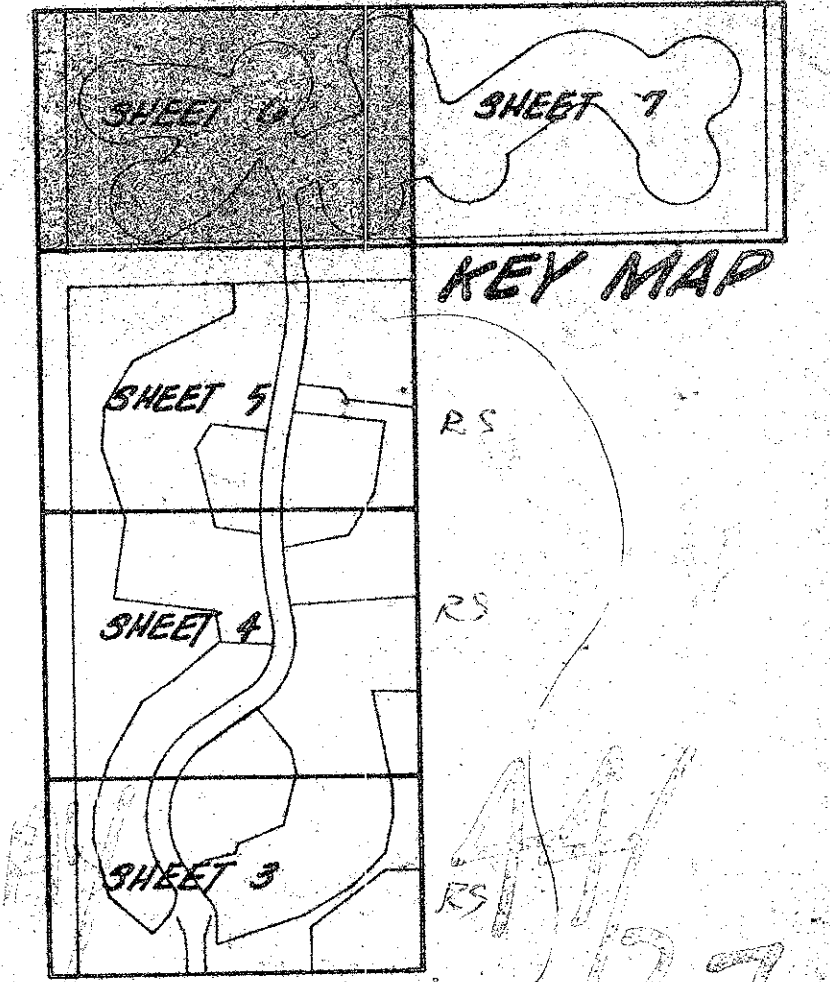
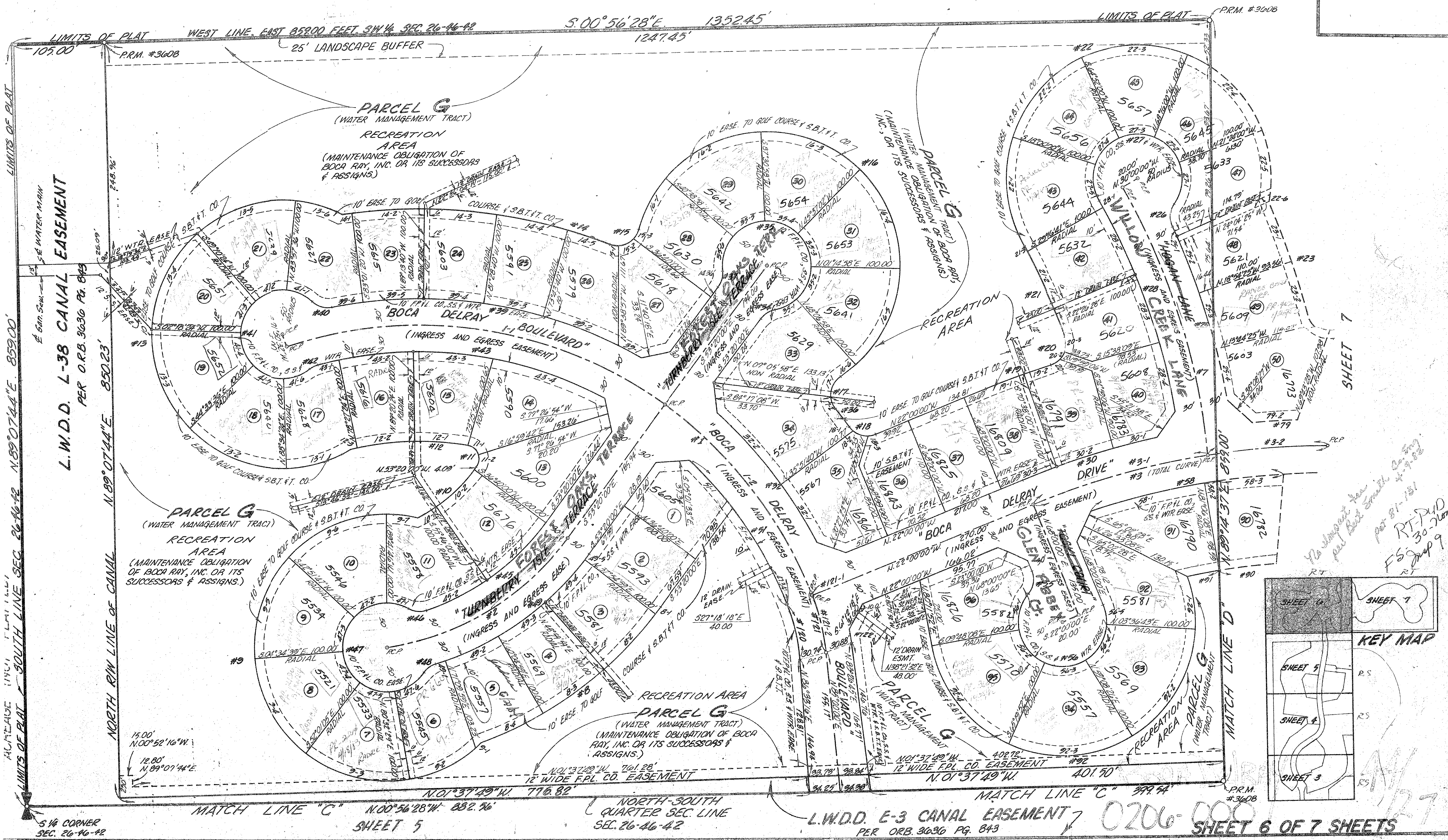
A P.U.D.

A PORTION OF SECTION 26, TOWNSHIP 46
SOUTH, RANGE 42 EAST, PALM BEACH
COUNTY, FLORIDA.



27

ACREAGE (NOT PLATTED)



*No impact from
Pal Beach Small Co. Proj.
RT-PUD
FS-30-2009
RT
4-9-02*

0206-009 SHEET 6 OF 7 SHEETS