

44/24

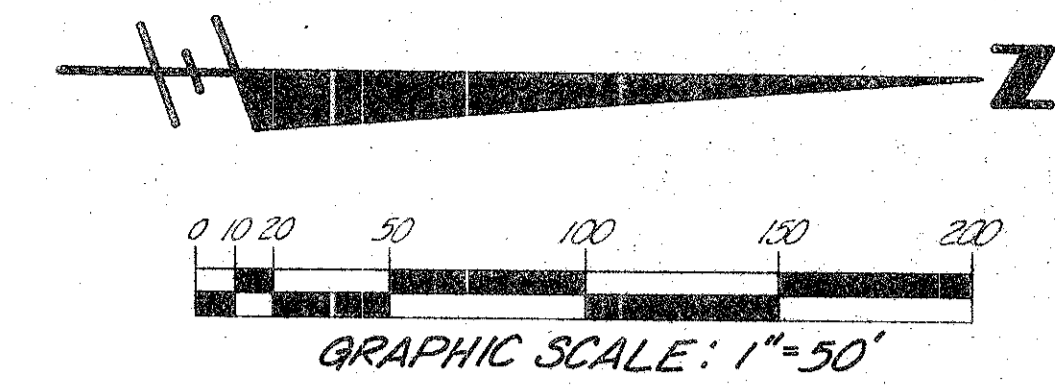
THIS INSTRUMENT PREPARED UNDER THE
DIRECTION OF JOHN H. FITSCHEN
CRAVEN THOMPSON & ASSOCIATES, INC.
LAND SURVEYORS · CIVIL ENGINEERS
3974 OKEECHOBEE BOULEVARD,
WEST PALM BEACH, FLORIDA

BOCA DELRAY

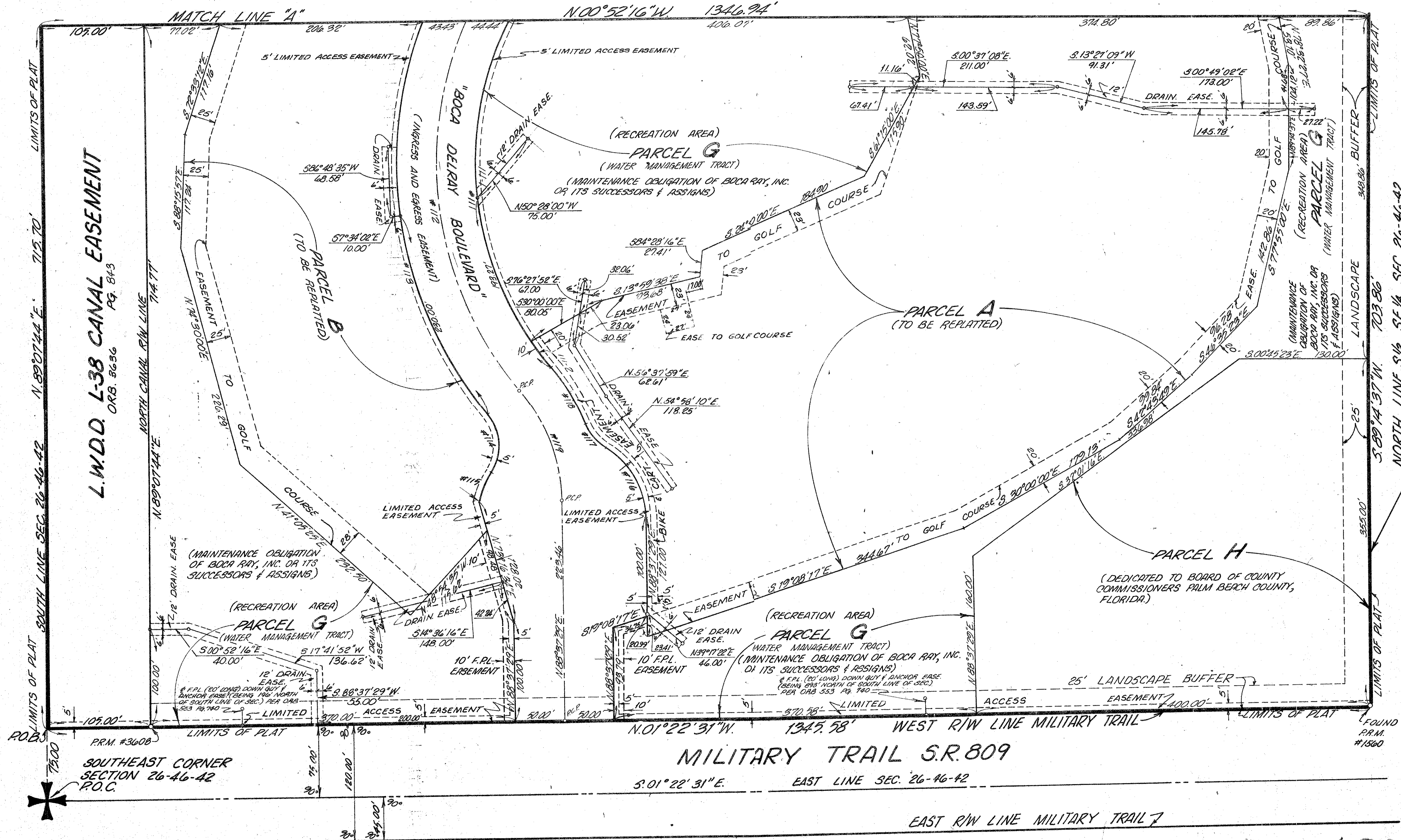
A P.U.D.

A PORTION OF SECTION 26, TOWNSHIP 46
SOUTH, RANGE 42 EAST, PALM BEACH
COUNTY, FLORIDA.

SHEET 4

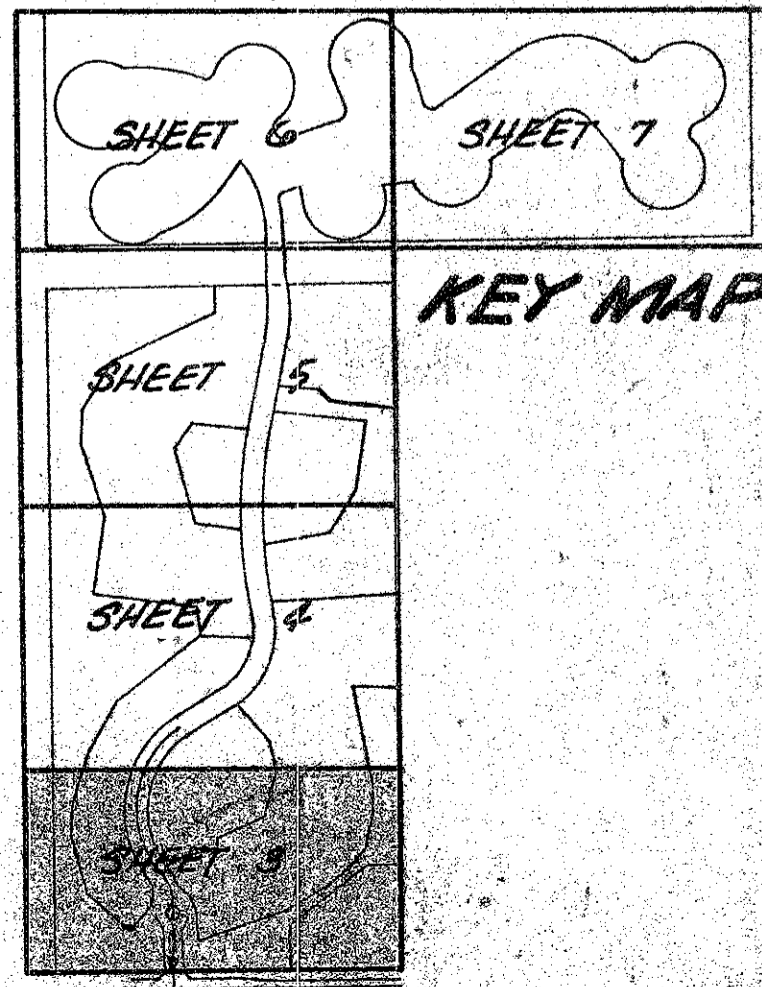


24



ACREAGE
(NOT PLATTED)

*Prepared by
Palm Beach Survey Co., Inc.
4-9-82
P.L. 81-131
R.S. P.U.D.*



DEL AIRE GOLF CLUB
(P.B. 35 PR. 1-4)

Boca Delray 0206-000

44/24