

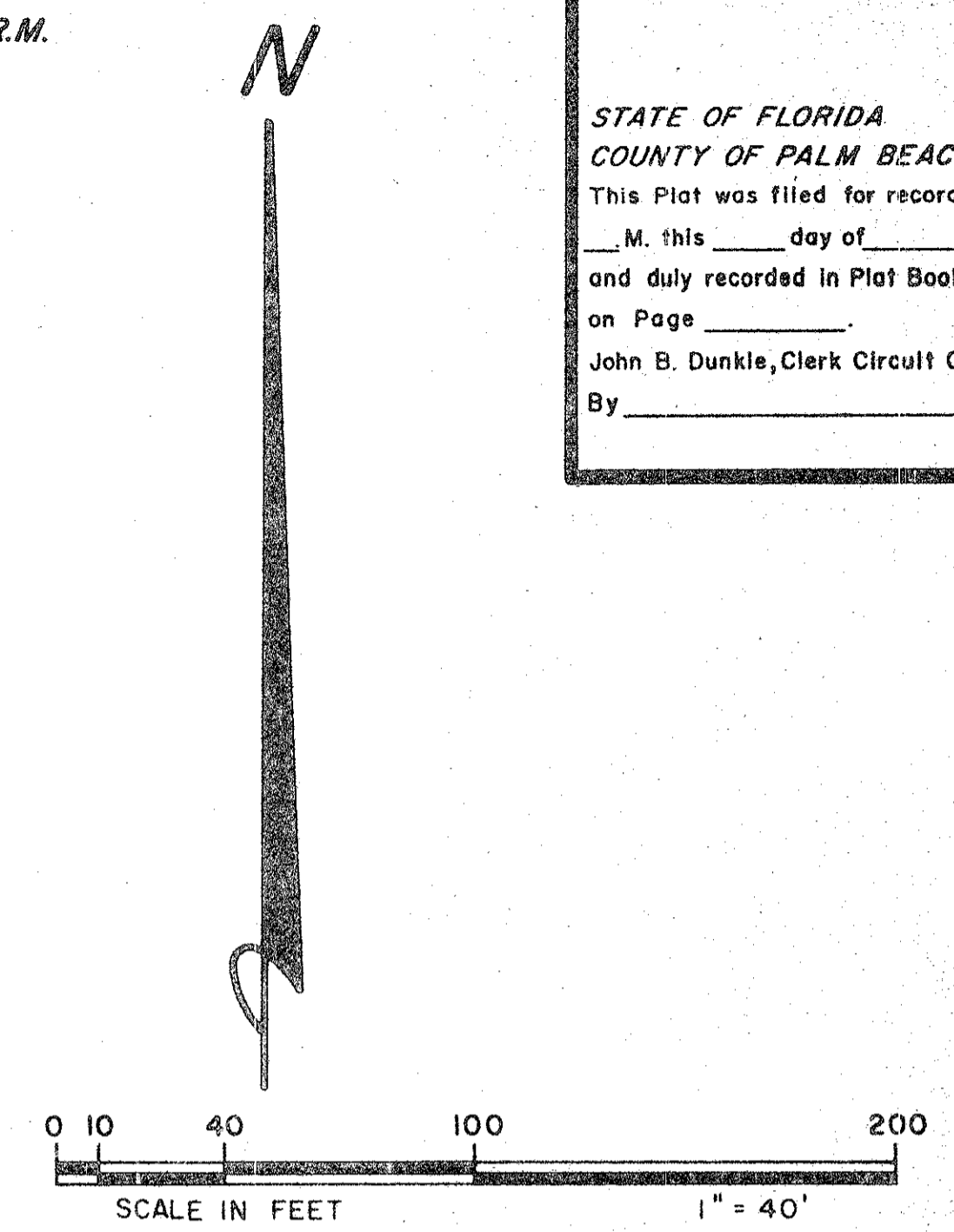
43/199

PLAT OF
WALDEN POND, P.U.D.

SHEET TWO OF TWO SHEETS
UNPLATTED

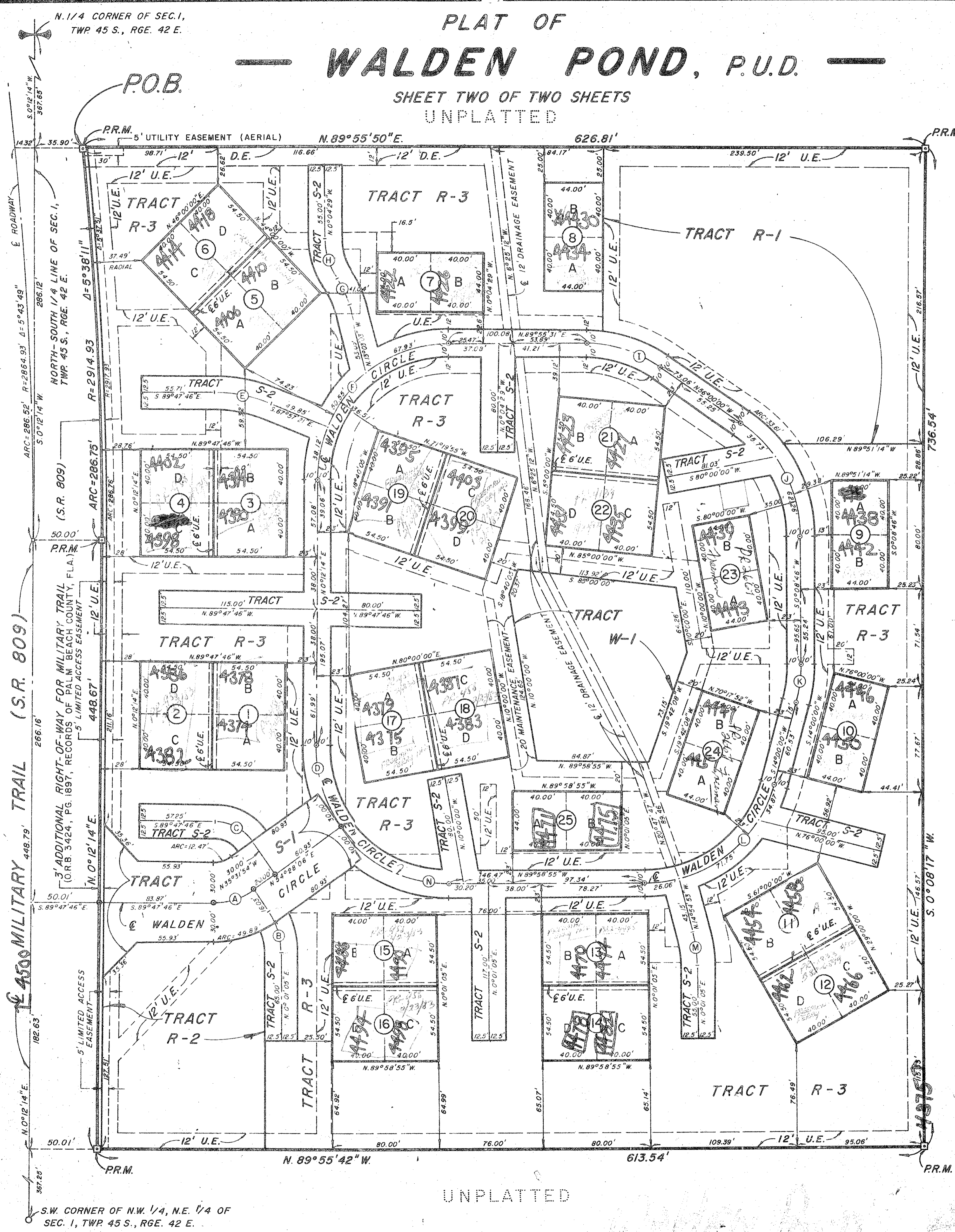
STATE OF FLORIDA
COUNTY OF PALM BEACH^{SS}
This Plat was filed for record at
M. this _____ day of _____ 19____
and duly recorded in Plat Book No. _____
on Page _____
John B. Dunkle, Clerk Circuit Court
By _____ D.C.

LEGEND
"D.E." DENOTES DRAINAGE EASEMENT
"U.E." DENOTES UTILITY EASEMENT



CENTERLINE CURVE DATA

CURVE	ARC	RADIUS	DELTA
(A)	31.19'	50.00'	35°44'08"
(B)	31.02'	50.00'	35°32'59"
(C)	31.04'	32.77'	54°15'52"
(D)	62.37'	100.00'	35°44'08"
(E)	38.12'	100.00'	21°50'25"
(F)	156.60'	100.00'	89°43'17"
(G)	20.07'	50.00'	23°00'00"
(H)	31.39'	50.00'	35°58'31"
(I)	59.47'	100.00'	34°04'29"
(J)	97.99'	100.00'	56°08'46"
(K)	24.18'	100.00'	13°51'14"
(L)	132.68'	100.00'	76°01'05"
(M)	25.90'	100.00'	14°50'22"
(N)	95.03'	100.00'	54°27'01"



UNPLATTED

UNPLATTED



MICHAEL B. SCHORAH & ASSOCIATES, INC.
ENGINEERS
PLANNERS
DEVELOPMENT CONSULTANTS
1850 FOREST HILL BLVD.
SUITE 205
WEST PALM BEACH,
FLORIDA 33406
PHONE: (305) 968-0080

0330001