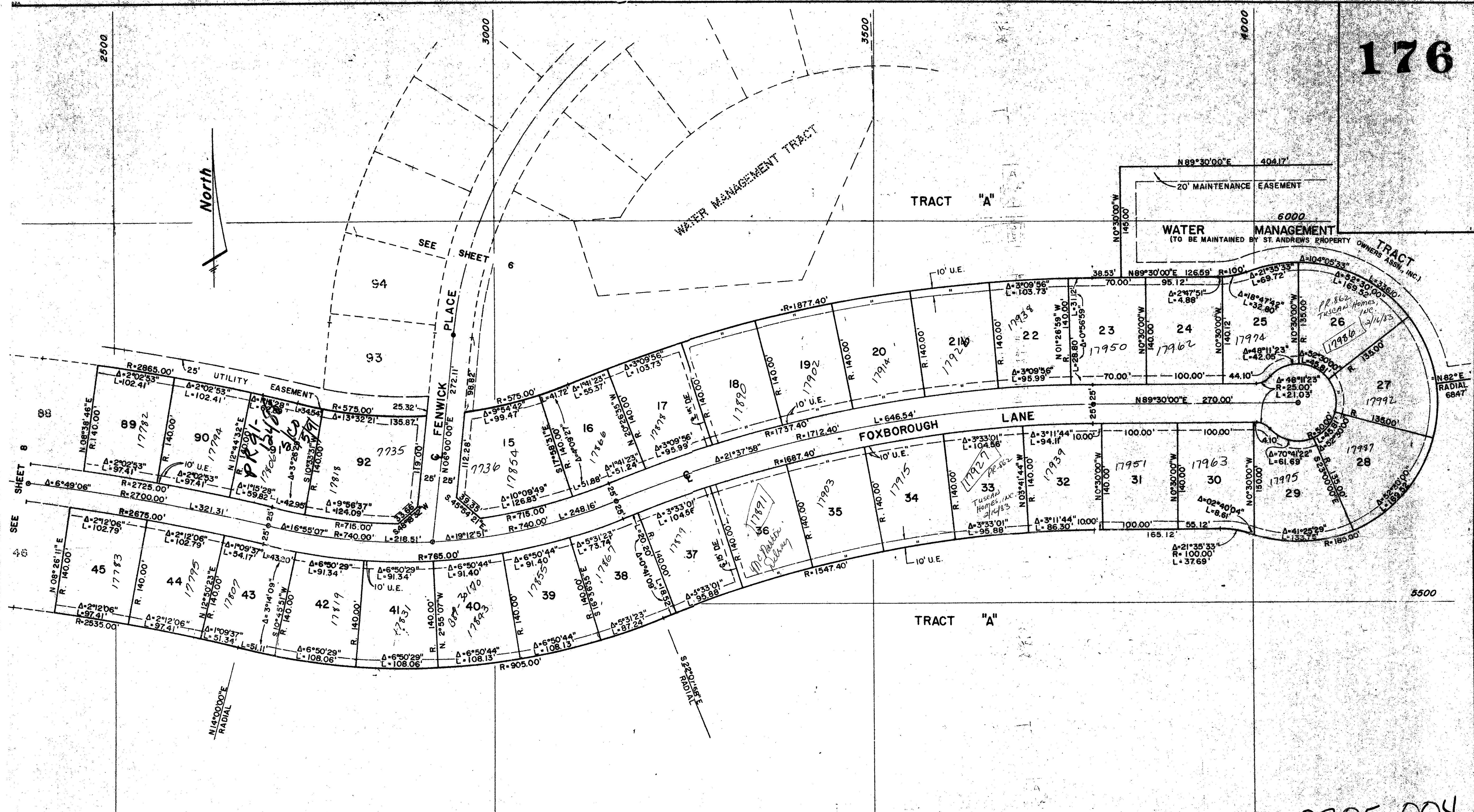


43/176

176

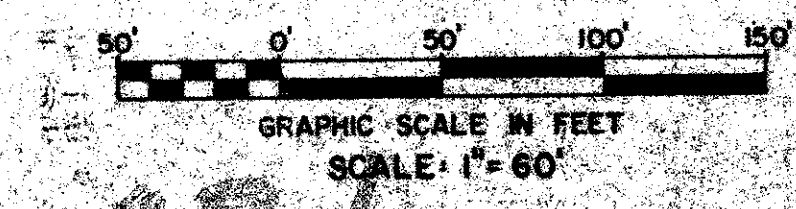


NOTES:

1. THERE SHALL BE NO BUILDINGS OR STRUCTURES PLACED ON PUBLIC UTILITY AND BUFFER EASEMENTS.
2. BEARINGS SHOWN HEREON ARE RELATIVE TO THE NATIONAL GEODETIC SURVEY TRAVERSE MERCATOR, FLORIDA EAST ZONE, GRID NORTH.
3. ● = DENOTES PERMANENT CONTROL POINT (P.C.P.)
4. □ = DENOTES PERMANENT REFERENCE MONUMENT (P.R.M.)
5. R. = DENOTES RADIAL LINE
6. N.R. = DENOTES NON-RADIAL LINE
7. U.E. = DENOTES UTILITY EASEMENT
8. L.A.E. = DENOTES LIMITED ACCESS EASEMENT
9. D.E. = DENOTES DRAINAGE EASEMENT
10. WHERE UTILITY AND DRAINAGE EASEMENTS INTERSECT THE DRAINAGE EASEMENT SHALL TAKE PRECEDENCE.
11. THERE SHALL BE NO BUILDINGS OR THE PLANTING OF TREES OR SHRUBS ON DRAINAGE EASEMENTS.

0305-004

THIS INSTRUMENT PREPARED BY:
 CRAIG L. WALLACE
 WILLIAM G. WALLACE, INC.
 CONSULTING ENGINEERS AND LAND SURVEYORS
 321 NORTHLAKE BOULEVARD
 NORTH PALM BEACH, FLORIDA 33408



PLAT No 2

ST. ANDREWS COUNTRY CLUB
(A PUD)

WILLIAM G. WALLACE, INC.
CONSULTING ENGINEERS AND LAND SURVEYORS
 321 NORTHLAKE BOULEVARD, NORTH PALM BEACH, FL 33408-2202
 (561) 844-1100 FAX (561) 844-1101 TOLL FREE 1-800-255-2822

FIELD	D.H.	JOB NO.	480-1902	DATE	1-10-81	DWG. NO.	80-789
OFFICE	S.D.	DATE	1-10-81	SHEET	2	OF	9
CHKD.	CLW	REC.					

43/176