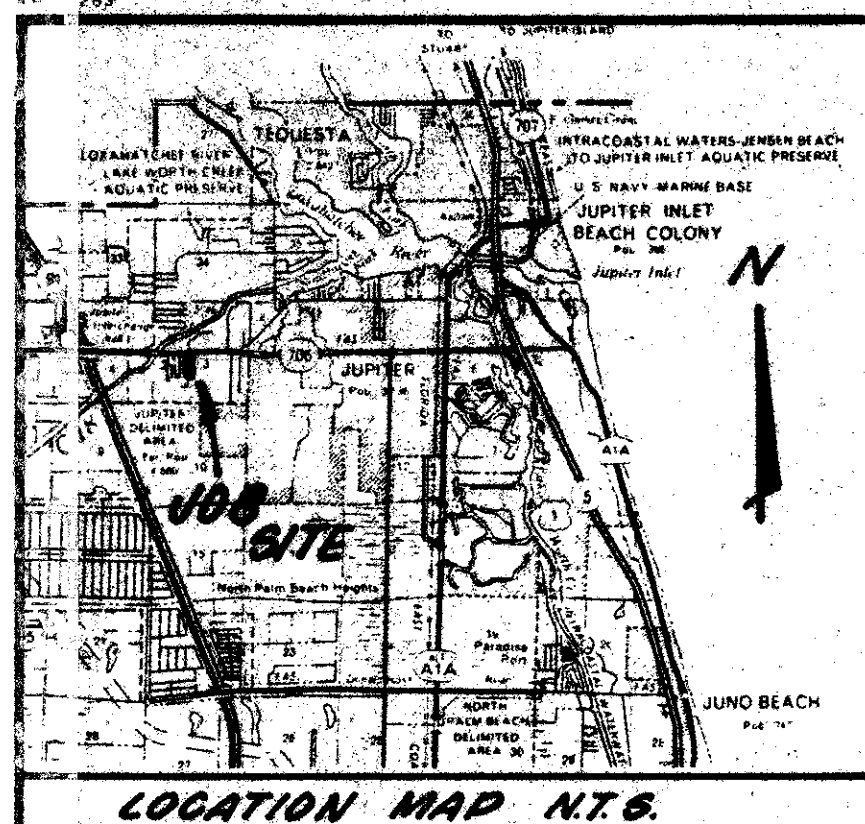


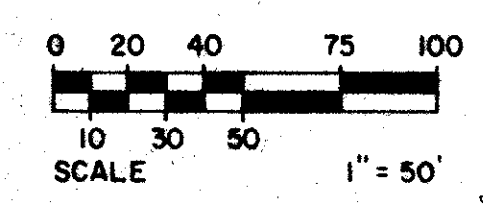
43/147



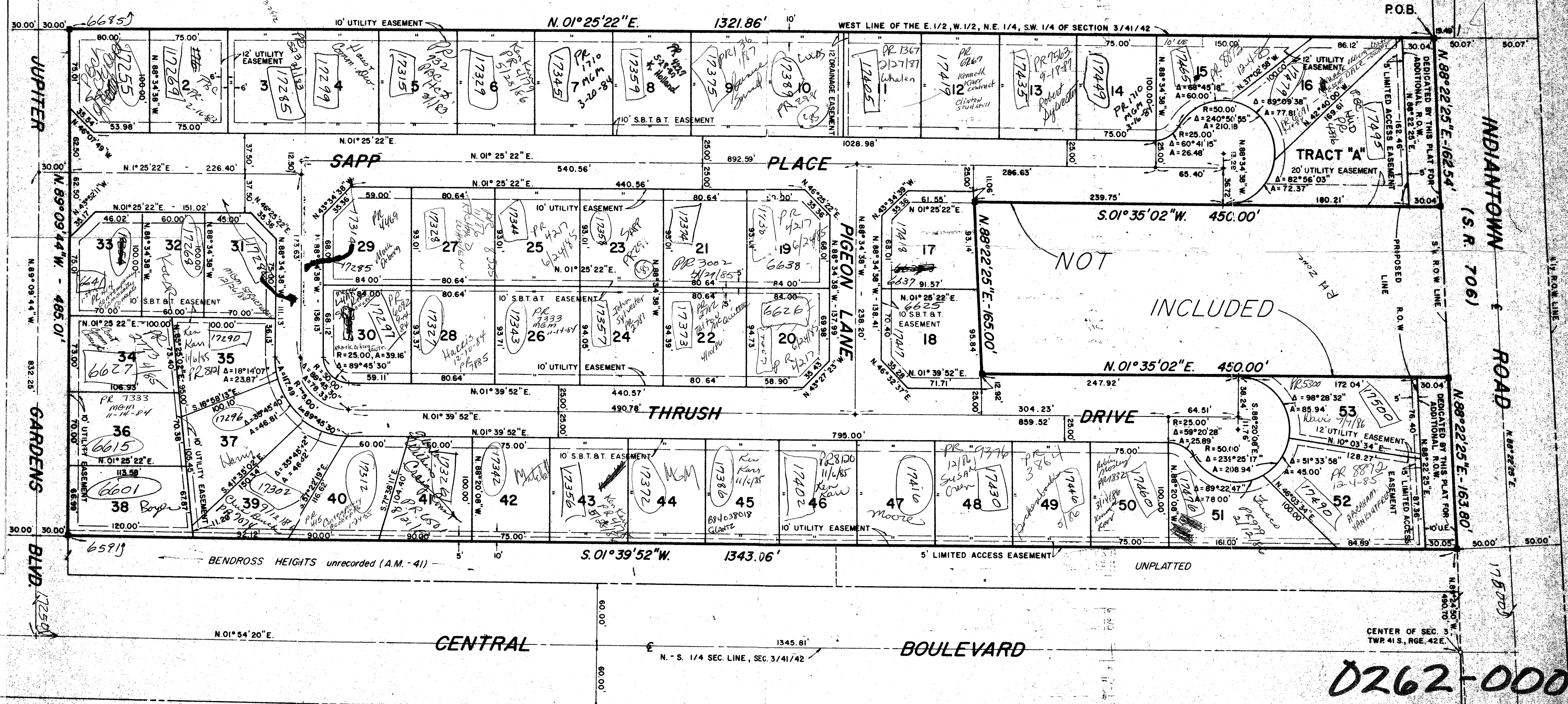
# PLAT OF JUPITER GARDENS

BEING A PARCEL OF LAND LYING IN THE SOUTH WEST QUARTER OF SECTION 3, TWP. 41 S., RGE. 42 E., PALM BEACH COUNTY, FLORIDA OCTOBER 1981

147



UNPLATTED



NOT INCLUDED

NOTE  
BEARING BASE: THE NORTH-SOUTH 1/4 SECTION LINE, SEC. 3/41/42 IS TAKEN AS BEING N.01°54'20"E.  
AND ALL OTHER BEARINGS ARE RELATIVE THERETO.

■ = P.R.M. (PERMANENT REFERENCE MONUMENT)  
● = P.C.P. (PERMANENT CONTROL POINT)  
U.E. = UTILITY EASEMENT

LINDANE, BROWNING & FERRARI, INC.  
Consulting Engineers, Planners & Surveyors  
426 INDIANTOWN ROAD, 351 COLORADO AVENUE  
JUPITER, FLORIDA 33458 STUART, FLORIDA 33992

0262-000 RH  
JUPITER GARDENS 43/147

2 2