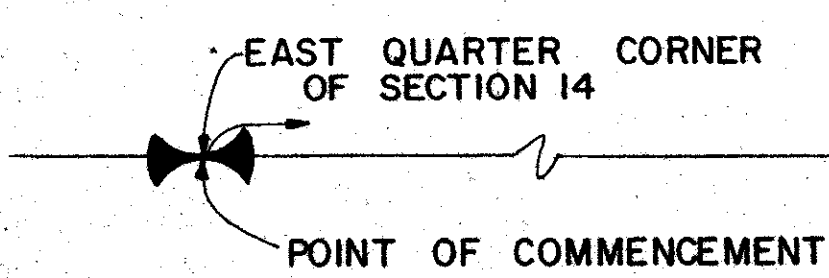
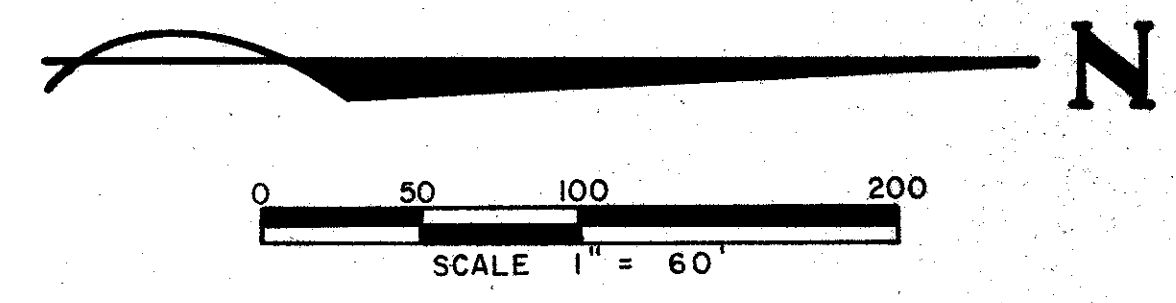
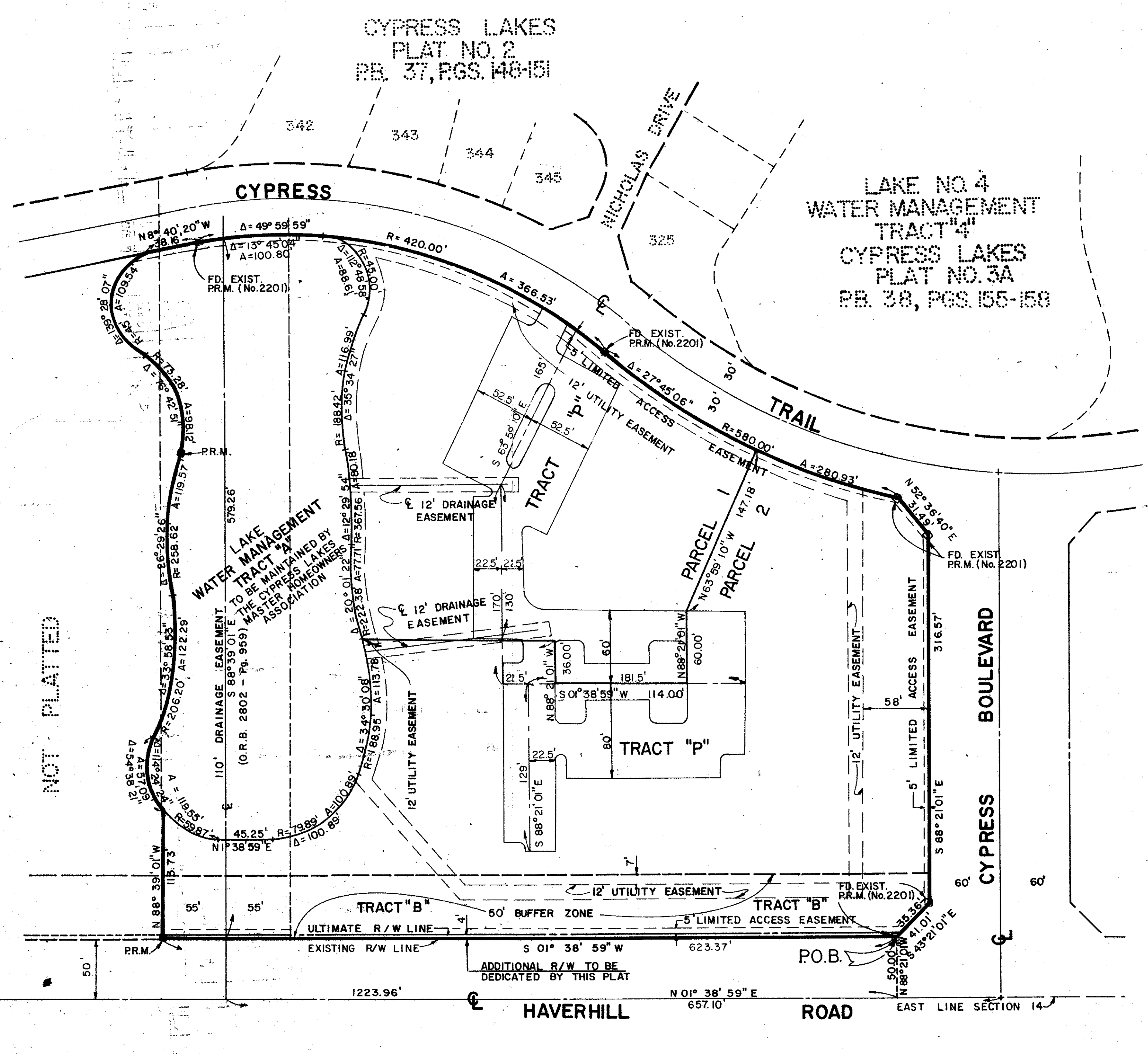


43/132

132

A PLANNED UNIT DEVELOPMENT IN CYPRESS LAKES
 CYPRESS LAKES-PLAT NO. 5
 SECTION 14, TOWNSHIP 43 SOUTH, RANGE 42 EAST
 PALM BEACH COUNTY, FLORIDA
 IN 2 SHEETS SHEET NO. 2
 A PART OF PHASE V DEVELOPMENT
 JANUARY 1981

STATE OF FLORIDA }
 COUNTY OF PALM BEACH }
 This Plat was filed for record at _____ M.
 this _____ day of _____
 19 _____, and duly recorded in Plat Book No. _____
 on page _____
 JOHN B. DUNKLE, Clerk Circuit Court
 By _____, D.C.



CYPRESS LAKES
 PLAT NO. 2
 PG. 37 PGS. 148-151

43/132 0234-302

ROSSI AND MALAVASI ENGINEERS, INC. WEST PALM BEACH, FLORIDA		CYPRESS LAKES PLAT NO. 5 IN 2 SHEETS SHEET NO. 2	
Date	SEPT. 1980	Designed	R. ANDERSON
Drawn	M. A. GREGG	Scale	1" = 60'
Checked		Job No.	3136-80
Approved		File No.	