

43/130

# DEL MAR PLAZA - TRACT II-B

A PLAT OF A PORTION OF SECTION 21, TOWNSHIP 47 S., RANGE 42 E.  
AND ALSO BEING A REPLAT OF A PORTION OF TRACT II, BOCA DEL MAR PLAT NO. 5 AS RECORDED IN  
PLAT BOOK 30, PAGES 127 & 128 OF THE PUBLIC RECORDS OF PALM BEACH COUNTY, FLORIDA  
PALM BEACH COUNTY, FLORIDA

JOHN A. GRANT, JR., INC.

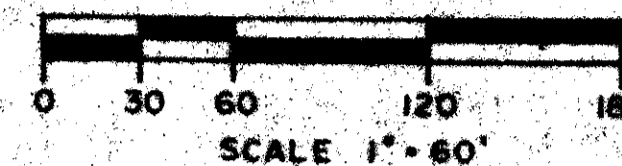
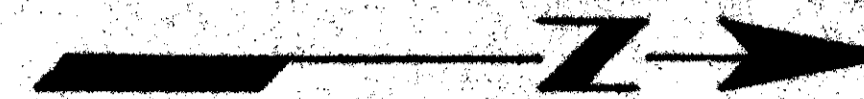
CONSULTING ENGINEERS & LAND SURVEYORS

BOCA RATON, FLORIDA

130

PUD CASTEL GARDENS SEPTEMBER 1981  
SHEET 3 OF 3

TRACT 9  
BOCA DEL MAR NO. 5  
P.B. 30 PG. 128

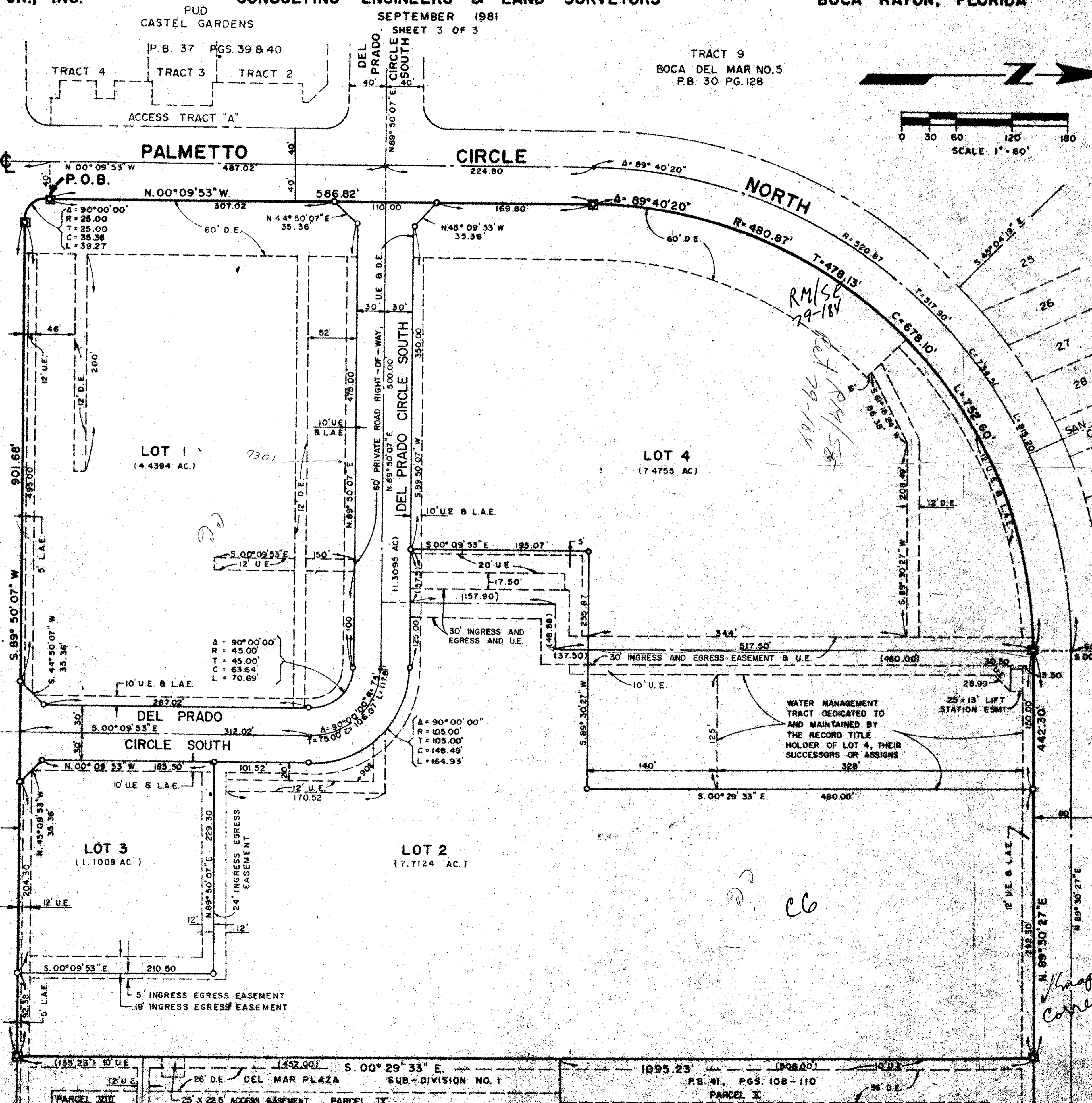


AREAS TABLE

TOTAL AREA THIS PLAT	22.037
TOTAL AREA DEL MAR PLAZA S/D NO. 1	24.006
TOTAL AREA TRACT II	47.043
AREA OF LOTS	20.728
AREA OF ROADS	1.309

TRACT 21  
BOCA DEL MAR NO. 6  
P.B. 30, PGS. 142, 143

PALMETTO PARK ROAD



*Handwritten notes:* RM/SG 7-9-18, 51-66, 51-184, 51-185, 51-186, 51-187, 51-188, 51-189, 51-190, 51-191, 51-192, 51-193, 51-194, 51-195, 51-196, 51-197, 51-198, 51-199, 51-200

*Handwritten:* CB

43/130

0205-320

NOTE:  
Bearings shown hereon are based on bearings shown on the Plat of BOCA DEL MAR NO. 5 as recorded in Plat Book 30, Pages 127 & 128 of the Public Records of Palm Beach County, Florida.

NOTE:  
No buildings, trees, shrubs will be placed on easements.

- PRM Indicates Permanent Reference Monument
- PCP Indicates Permanent Control Point
- U.E. Indicates Utility Easement
- D.E. Indicates Drainage Easement
- L.A.E. Indicates Limited Access Easement

This instrument was prepared by:  
John A. Grant, Jr., John A. Grant, Jr., Inc.  
2033 North Federal Highway, Boca Raton, Florida 33431