

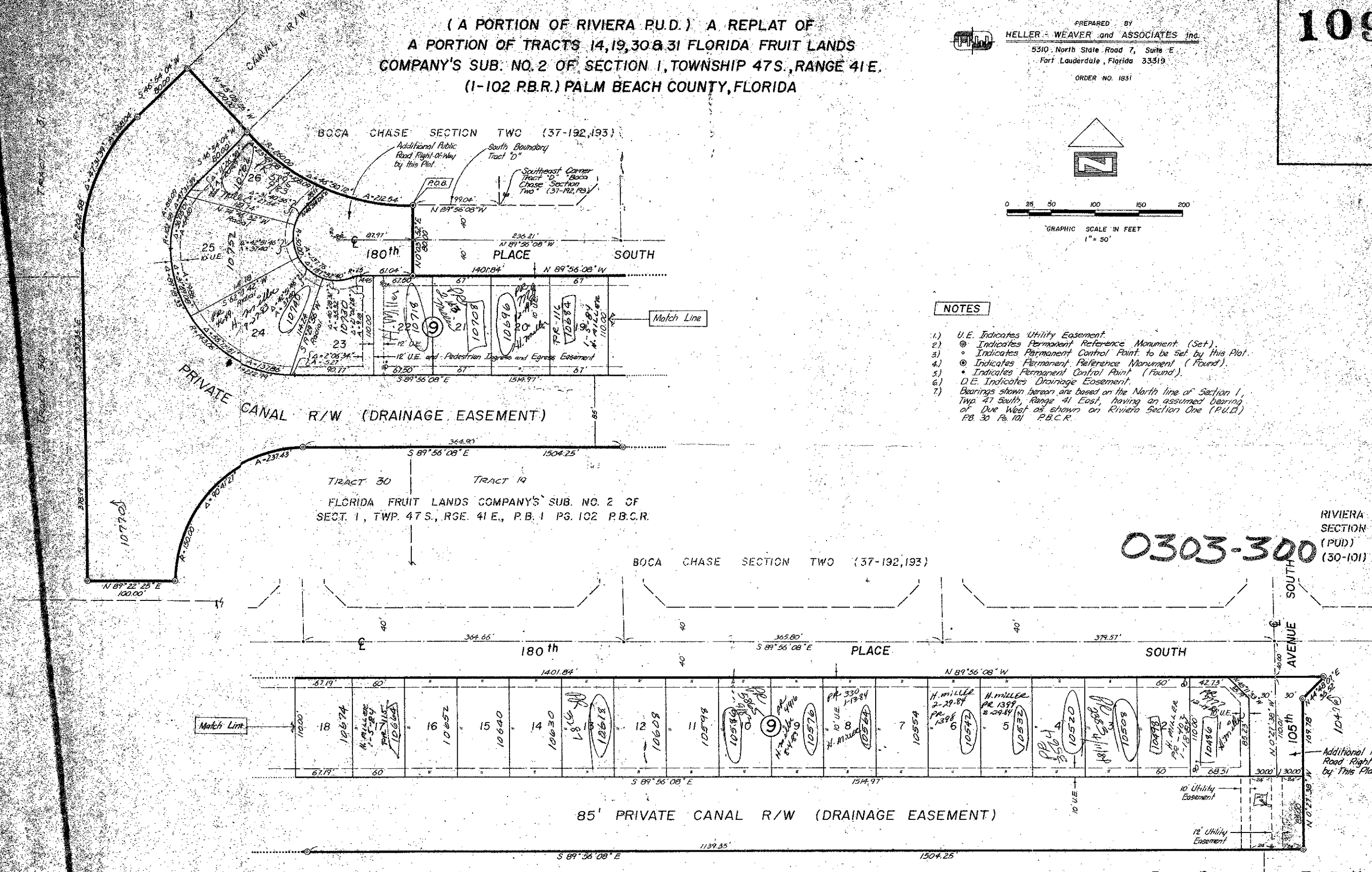
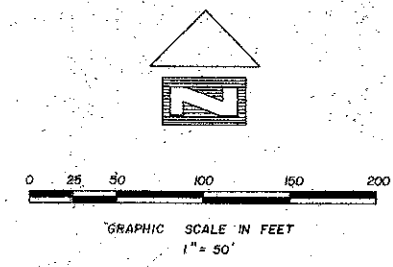
43/109

BOCA CHASE SECTION THREE

(A PORTION OF RIVIERA P.U.D.) A REPLAT OF
A PORTION OF TRACTS 14, 19, 30 & 31 FLORIDA FRUIT LANDS
COMPANY'S SUB. NO. 2 OF SECTION 1, TOWNSHIP 47 S., RANGE 41 E.,
(1-102 P.B.R.) PALM BEACH COUNTY, FLORIDA

109

PREPARED BY
HELLER - WEAVER and ASSOCIATES Inc.
5310 North State Road 7, Suite E
Fort Lauderdale, Florida 33319
ORDER NO. 1831



NOTES

- 1.) U.E. Indicates Utility Easement.
- 2.) ⊙ Indicates Permanent Reference Monument (Set).
- 3.) ⊙ Indicates Permanent Control Point to be set by this Plat.
- 4.) ⊙ Indicates Permanent Reference Monument (Found).
- 5.) ⊙ Indicates Permanent Control Point (Found).
- 6.) D.E. Indicates Drainage Easement.
- 7.) Bearings shown herein are based on the North line of Section 1, Twp. 47 South, Range 41 East, having an assumed bearing of Due West as shown on Riviera Section One (P.U.D.) PB. 30 P. 101 P.B.C.R.

0303-300

RIVIERA SECTION ONE (P.U.D.) (30-101)

FLORIDA FRUIT LANDS COMPANY'S SUB. NO. 2 OF SECT. 1, TWP. 47 S., RGE. 41 E., P.B. 1 PG. 102 P.B.C.R.

BOCA CHASE #3 4/1/09
SHEET 2 OF 2 SHEETS