

43/40

A PLAT OF

Little Oaks

(98)

A REPLAT OF PORTIONS OF TRACTS 2, 10, & 11, LOXAHATCHEE GARDEN FARMS, PLAT BOOK 2, PAGE 68,
PUBLIC RECORDS OF PALM BEACH COUNTY, FLORIDA
SECTION 34, TOWNSHIP 40 S, RANGE 42 E.

40

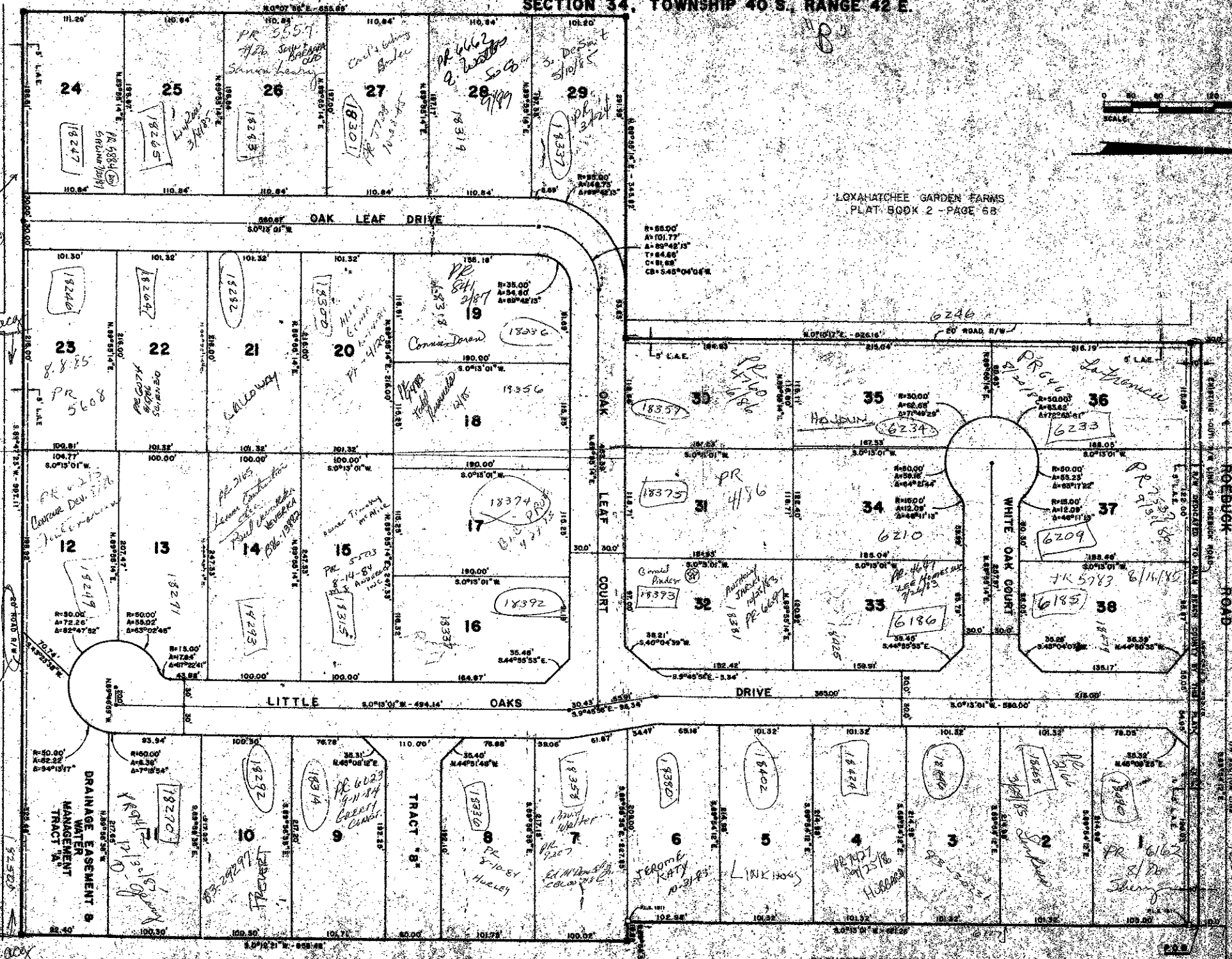
STATE OF FLORIDA
COUNTY OF PALM BEACH
THIS PLAT WAS FILED FOR
RECORD BY _____
THIS DAY OF _____
A.D. 1981 AND ONLY BE
CORRECT IN FULL BOOK
IN PAGES 98
JOHN S. DANIEL, CLERK
CIRCUIT COURT
BY _____

LOXAHATCHEE GARDEN FARMS
PLAT BOOK 2 - PAGE 68

7/3/84
L.A.E. Easement
Opposite to former
Plot 13 abandoned
means re-plotting

RS
LOXAHATCHEE GARDEN FARMS
PLAT BOOK 2 - PAGE 68

Abandoned
7/3/84
agg.



LOXAHATCHEE GARDEN FARMS
PLAT BOOK 2 - PAGE 68

LOXAHATCHEE GARDEN FARMS
PLAT BOOK 2 - PAGE 68

BACHELET SUBMISSION
PLAT BOOK 31 - PAGE 216

SPLIT ZONING
RS
RHS
per meeting planning
to have plan & send for
dec. 1/30/81 per lot

TURNOUT REQUIRED
1000-026

- SURVAYOR'S NOTES**
- - DENOTES PERMANENT REFERENCE MONUMENT (P.R.M.)
 - - DENOTES PERMANENT CONTROL POINT (P.C.P.)
 - L.A.E. - LIMITED ACCESS EASEMENT
 - U.B. - UTILITY EASEMENT
 - - FOUND PERMANENT REFERENCE MONUMENT (P.R.M.)

NOTE:
IN ADDITION TO EASEMENTS SHOWN ON PLAT THERE IS A 10' UTILITY EASEMENT CONTIGUOUS TO ROAD RIGHT OF WAY EXCEPT ACCESS ALL LOTS

REMARKS: PLAT IS MADE UP OF 38 LOTS BEING 1/4 SECTION 34, TOWNSHIP 40 SOUTH, RANGE 42 EAST.

UNION MECHANICAL SERVICE, INC.
1000 W. PALM BEACH BLVD., SUITE 100
PALM BEACH, FLORIDA 33480

2 2

LITTLE OAKS 43/40