

42/164

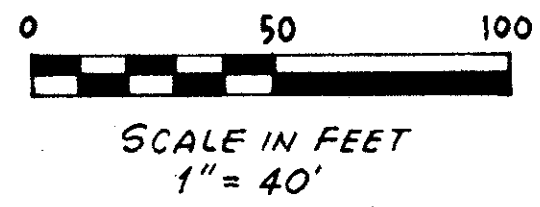
PARK PLACE OF WELLINGTON

A PLANNED UNIT DEVELOPMENT
IN PART OF SECTION 11, TWP. 44S., RGE. 41E.
PALM BEACH COUNTY, FLORIDA
IN 4 SHEETS SHEET NO. 4

Being a Replat of Part of PARCEL "A" OF SOUTH SHORE NO. 2A OF WELLINGTON-
PUD as recorded in Plat Book 31, Pages 116-119, inclusive, Public Records of Palm Beach County, Florida.

164

STATE OF FLORIDA
COUNTY OF PALM BEACH
This plat was filed for record at
M this day of 1980
and duly recorded in Plat Book No.
on page
JOHN B. DUNKLE, Clerk Circuit
Court



SHEET 3

SHEET 3

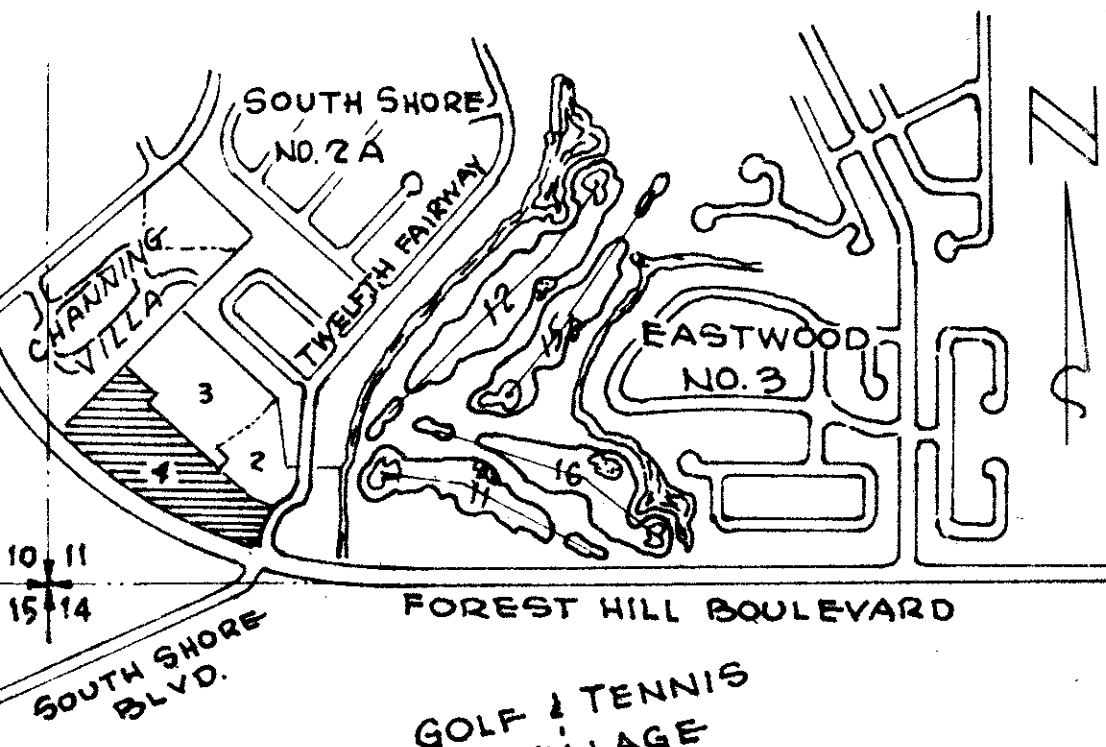
LIMITS SHEET 3



CHANNING VILLAGES
P.B. 38 PG. 145

CHANNING VILLAGES
P.B. 37 PG. 152

Tand. Bear. N. 44° 21' 03" W.



VICINITY SKETCH

NOTES
All bearings shown hereon are relative to an assumed meridian used throughout Wellington.
Building Setback Lines shall be as required by Palm Beach County Zoning Regulations.
There shall be no building or other structures placed on Utility easements.
There shall be no buildings or any kind of construction or trees or shrubs placed on Drainage Easements.
Easements are for Public Utilities, unless otherwise noted.
● denotes Permanent Reference Monument.
○ denotes Permanent Control Point.
Where Utility and Drainage Easements cross or coincide, Drainage Easements shall take precedent.
O.S.R. denotes Open Space and Recreation.

Park Place of Well.
42/164 0332-342

AS per
Drawings
75 17
FH-10

D. H. THARR
LAND SURVEYING
673 B FOREST HILL BOULEVARD WEST PALM BEACH, FLORIDA 33411
WELLINGTON COUNTRY PLAZA TELEPHONE 883-6182