

42/160

160

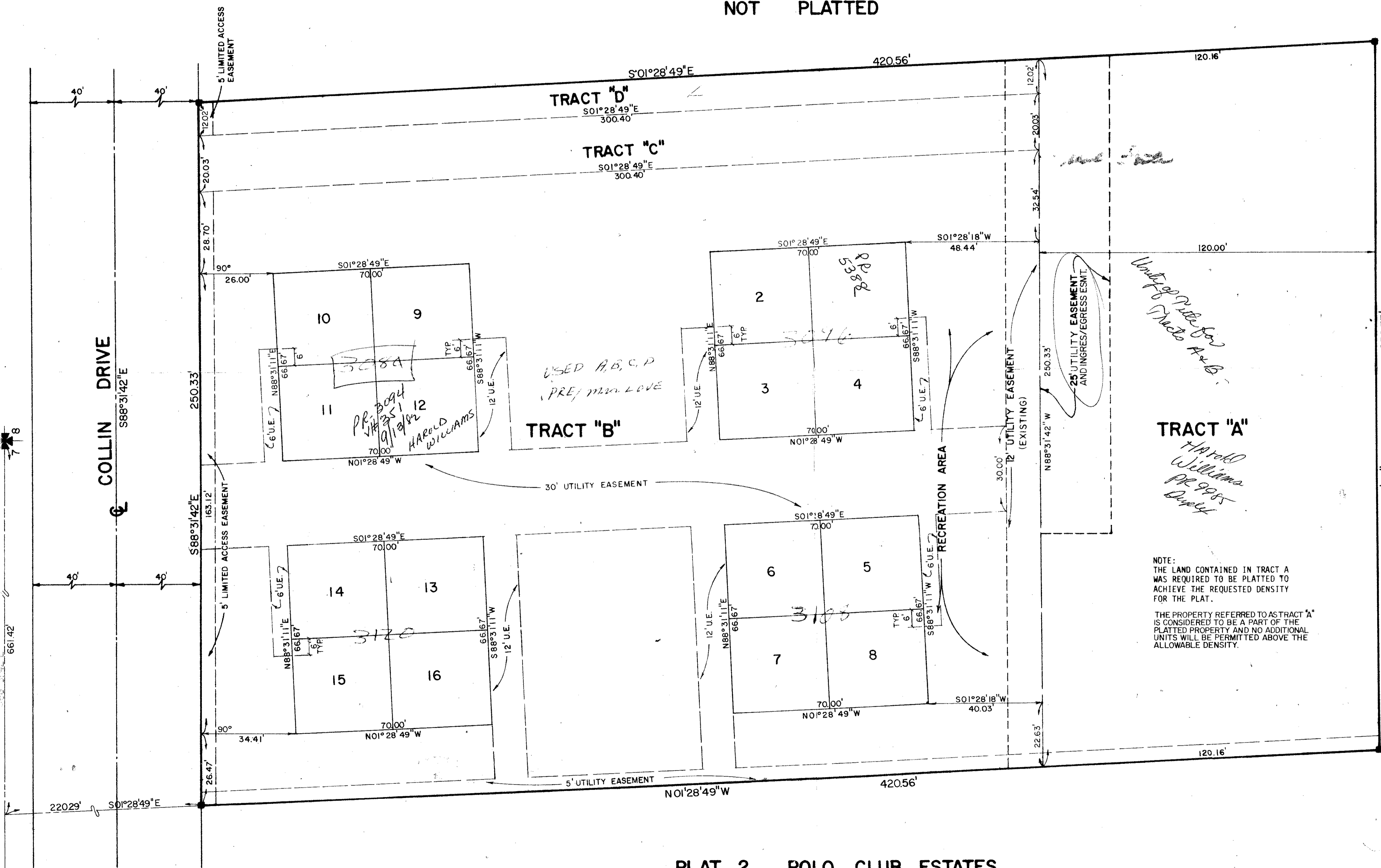
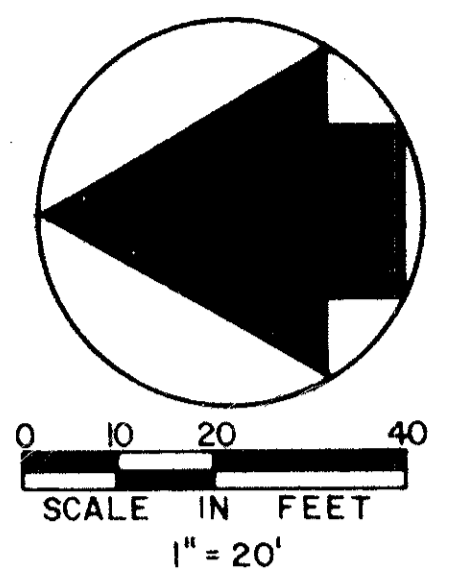
STATE OF FLORIDA
COUNTY OF PALM BEACH
THIS PLAT WAS FILED FOR
RECORD AT
THIS DAY OF
AD, 1980 AND DULY RECORDED
IN PLAT BOOK ON PAGES
AND
JOHN B. DUNKLE, CLERK
CIRCUIT COURT
BY: DC.

PLAT OF MILLWOOD

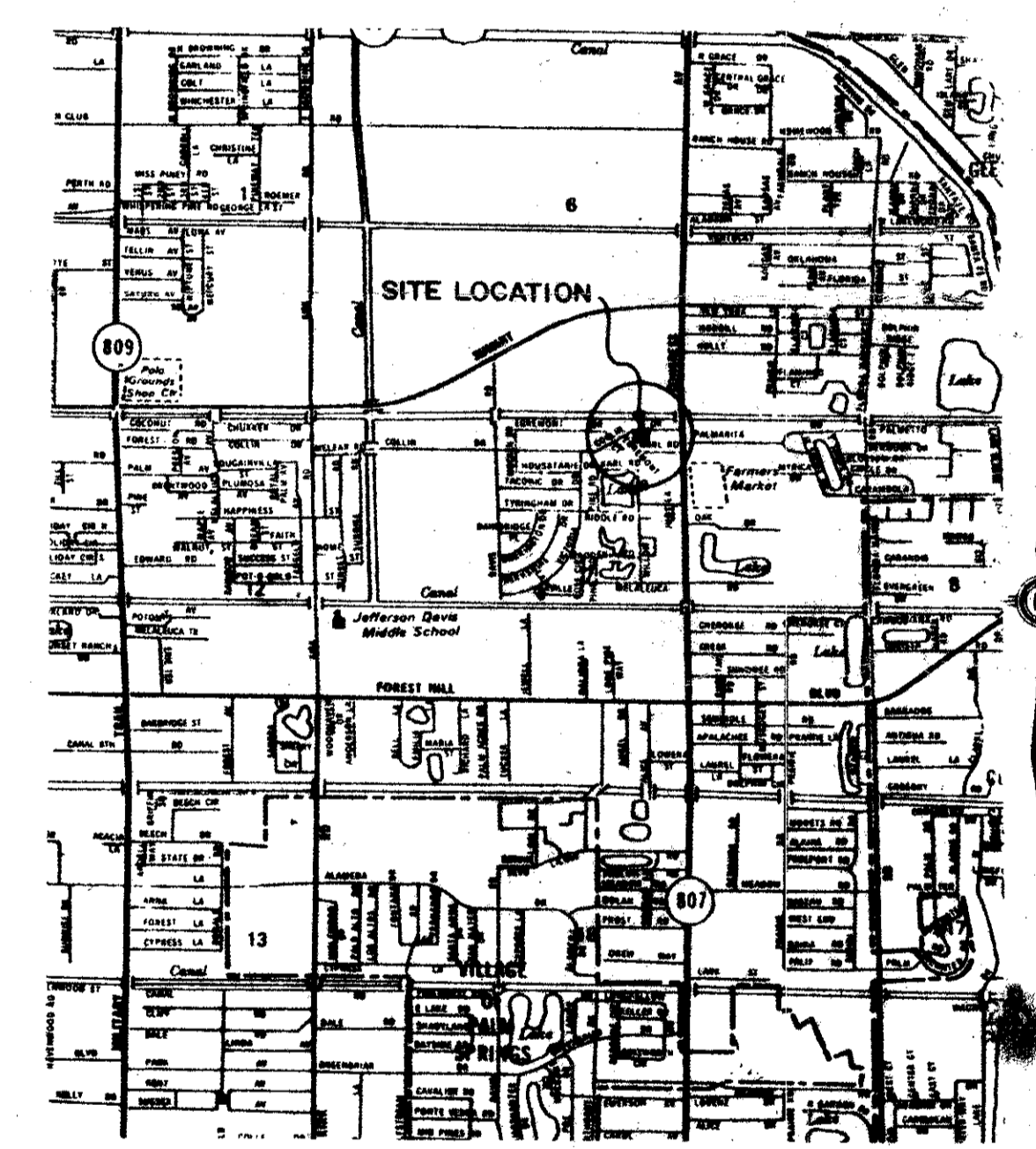
A PARCEL OF LAND LYING IN THE N.E. 1/4 OF THE N.E. 1/4 OF
SECTION 7, TOWNSHIP 44 SOUTH, RANGE 43 EAST.
PALM BEACH COUNTY, FLORIDA

SHEET 2 OF 2
AUGUST, 1980

NOT PLATTED



NOT PLATTED



PLAT 2, POLO CLUB ESTATES
P.B. 26, P.1.

- SURVEYOR'S NOTES:
1. BUILDING SET BACK LINES SHALL BE AS REQUIRED BY THE CURRENT PALM BEACH COUNTY ZONING REGULATIONS.
 2. PERMANENT REFERENCE MONUMENTS (P.R.M.'S), ARE DESIGNATED THUS:
 3. THERE SHALL BE NO CONSTRUCTION OR BUILDINGS OR TREES OR SHRUBS PLACED ON EASEMENTS.
 4. ALL BEARINGS SHOWN HEREON, ARE BASED ON THE TRANSVERSE MERCATOR GRID SYSTEM EAST ZONE OF FLORIDA.

Millwood 1000-024
42/160

Meridian
Surveying and mapping, Inc.
2328 So Congress Ave.
Suite 2-D
West Palm Beach, Florida 33409
PLAT OF MILLWOOD AUG 1980
78-023