

42/153

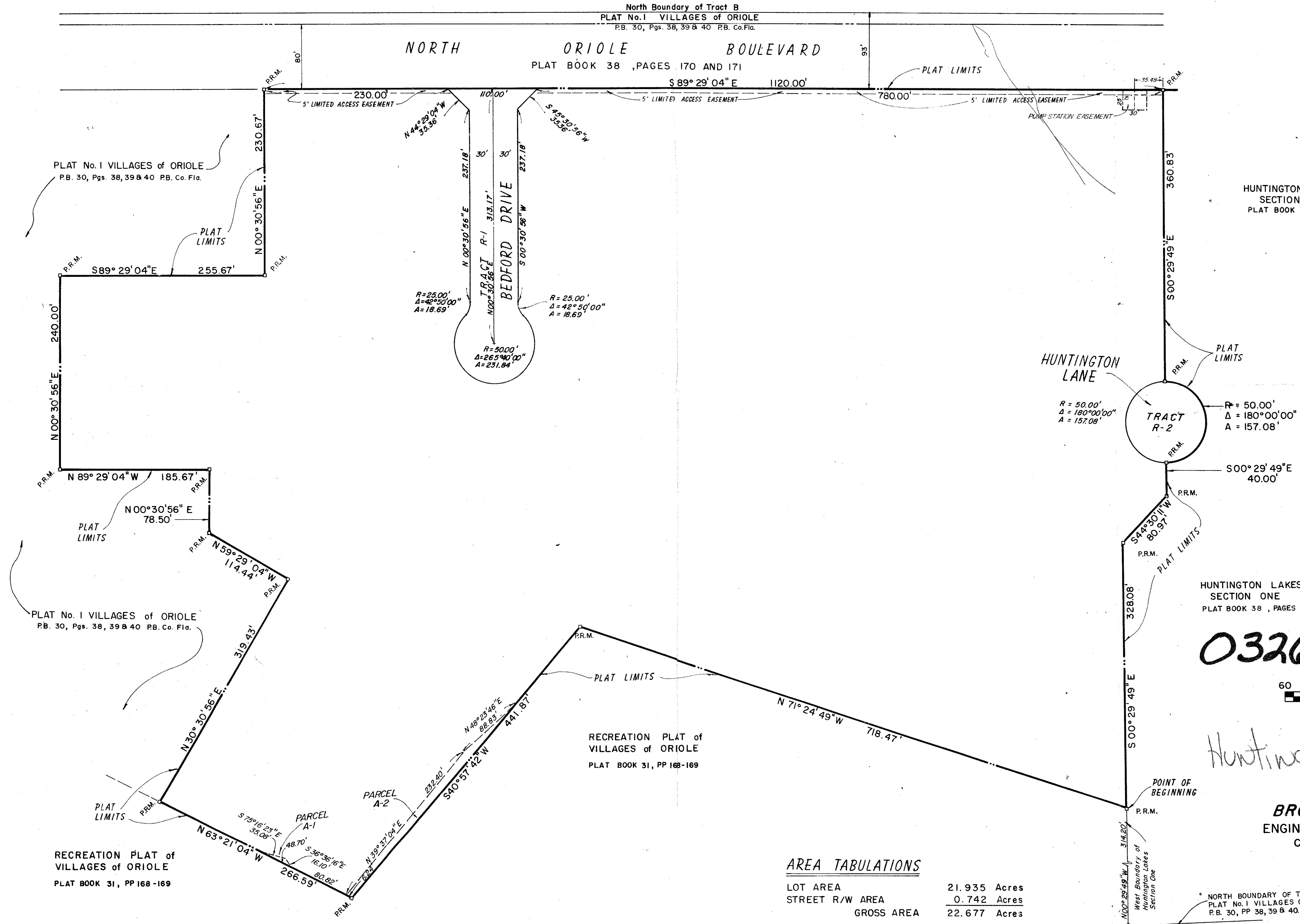
HUNTINGTON LAKES SECTION TWO

153

A PART OF A P.U.D.

BEING A REPLAT OF A PORTION OF TRACT B PLAT No. 1 VILLAGES OF ORIOLE (P.B. 30, PAGES 38, 39, & 40) SECTION 16, TOWNSHIP 46 SOUTH, RANGE 42 EAST, PALM BEACH COUNTY, FLORIDA

SHEET 2 of 2 SHEETS



HUNTINGTON LAKES SECTION ONE
PLAT BOOK 38, PAGES 194 & 195

0326-303

SCALE: 1" = 60'

GRAPHIC SCALE IN FEET

Huntington Lakes
SEC II

PREPARED BY
BROOME AND FARINA, INC.
ENGINEERS · PLANNERS · SURVEYORS
CORAL SPRINGS, FLORIDA
By: JOHN A. FARINA, P.L.S. 1564

AREA TABULATIONS

LOT AREA	21.935 Acres
STREET R/W AREA	0.742 Acres
GROSS AREA	22.677 Acres

* NORTH BOUNDARY OF TRACT "C", PLAT No. 1 VILLAGES OF ORIOLE, P.B. 30, PP 38, 39 & 40.

42/153