

42/145

Plat of "SANDALFOOT COVE, SECTION TEN"

BEING A REPLAT OF PORTIONS OF PALM BEACH FARMS
PLAT NO. 3, PLAT BOOK 2, PAGE 53,
SECTION 32, TOWNSHIP 47 SOUTH, RANGE 42 EAST,
PALM BEACH COUNTY, FLORIDA

GRAPHIC SCALE IN FEET
DECEMBER, 1980

145

SHEET 2 OF 2 SHEETS

THIS INSTRUMENT PREPARED BY: DENNIS F. BAUER
McLAUGHLIN ENGINEERING CO.
400 N.E. 3rd AVENUE, FORT LAUDERDALE, FLORIDA 33301
Phone: 763-7611

LEGEND

- Indicates 5' Limited-Access Easement
- Indicates 12' Total Drainage Easement
- Indicates 10' Total Utility Easement

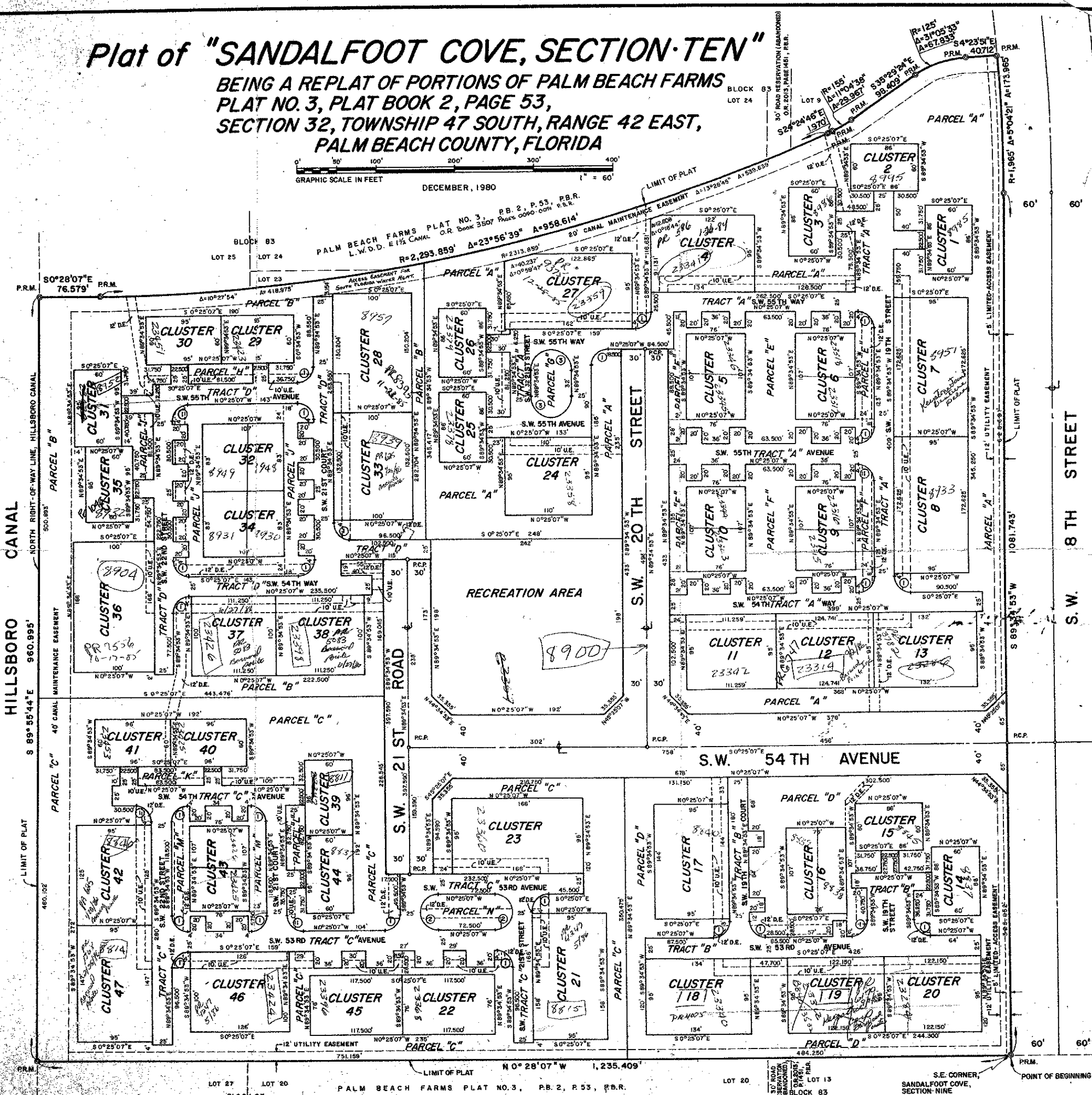
NOTES

- There shall be no buildings, structures, trees or shrubs placed in utility or drainage easements.
- There shall be no surface appurtenances permitted on canal maintenance easements.
- PR.M. indicates Permanent Reference Monument.
- R.C.P. indicates Permanent Control Point.
- THIS PLAT CONTAINS 29.6470 ACRES.
- P.B.R. indicates Palm Beach County Records.
- Utilities, including franchised utilities, power and light and telegraph, water, sewer, cable television, wiring to street lights, and gas shall be installed underground.
- Section data unavailable in this area. All surveys based upon block corners of PALM BEACH FARMS PLAT NO. 3, P.B. 2, P. 53, P.B.R.
- Bearings refer to an assumed meridian on the South line of Sandalfoot Cove, Section Nine, P.B. 38, P. 199 & P. 200, P.B.R.

NO.	RADIUS	DELTA	ARC	TANGENT	CHORD
1	20'	90°00'00"	31.416'	20'	28.284'
2	22.500'	180°00'00"	70.88'	-	48'
3	26.500'	180°00'00"	83.82'	-	53'

Sandalfoot Cove #10

42
145
0306-005



HILLSBORO CANAL

S.W. 20 TH STREET

S.W. 54 TH AVENUE

S.W. 21 ST ROAD

CANAL E-1/2 (LAKEWORTH DRAINAGE DISTRICT)

NORTH

POINT OF BEGINNING

S.E. CORNER, SANDALFOOT COVE, SECTION NINE

PALM BEACH FARMS PLAT NO. 3, P.B. 2, P. 53, P.B.R.