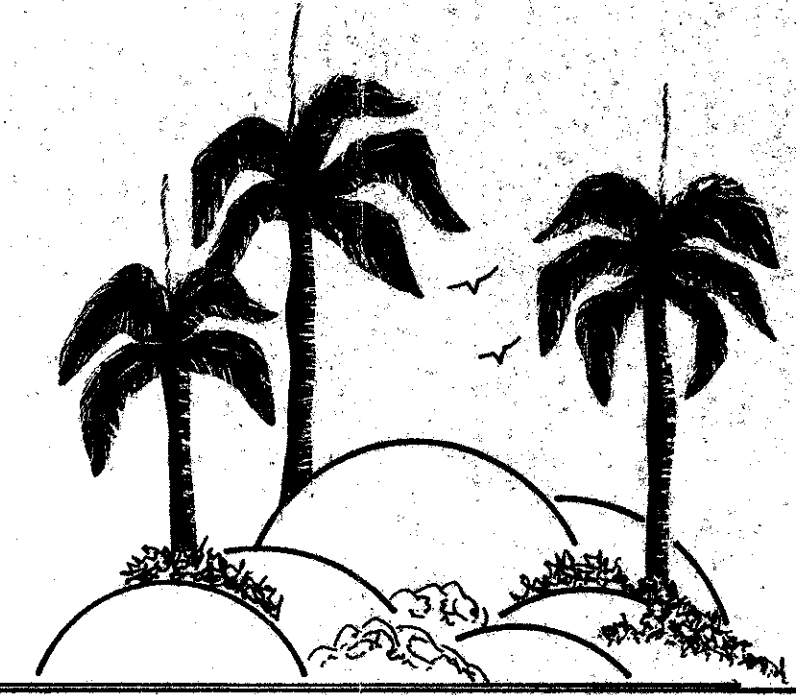
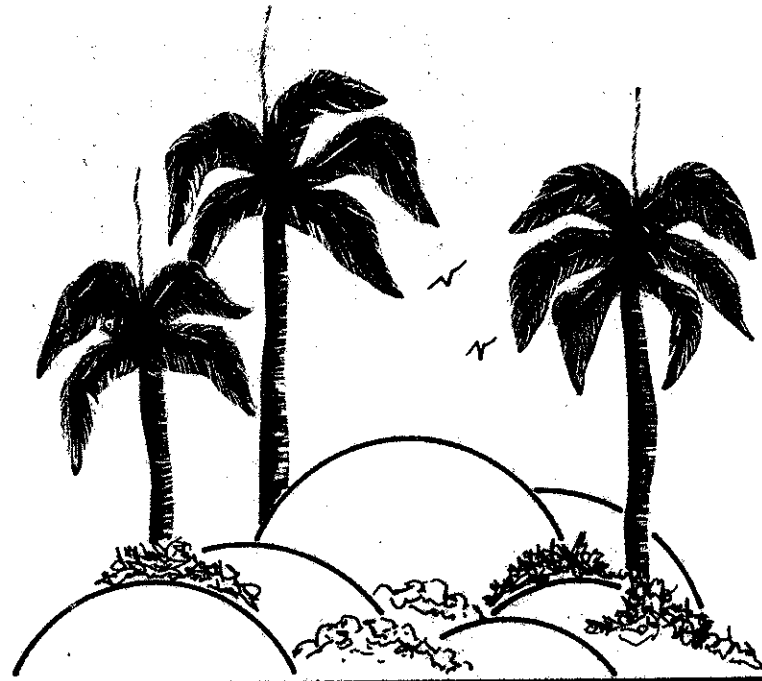


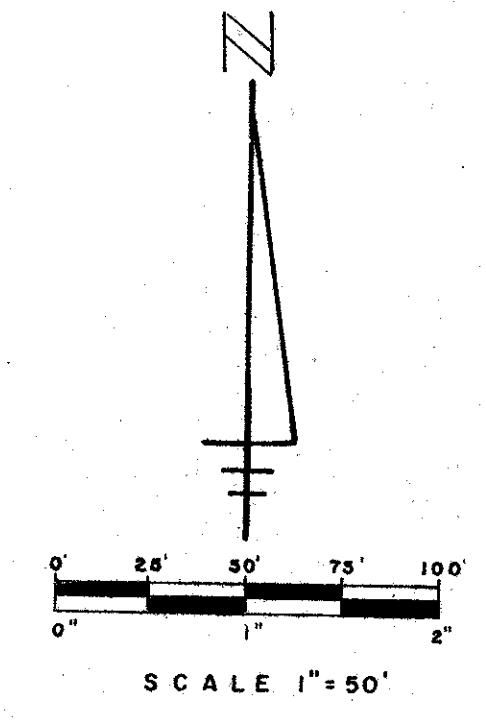
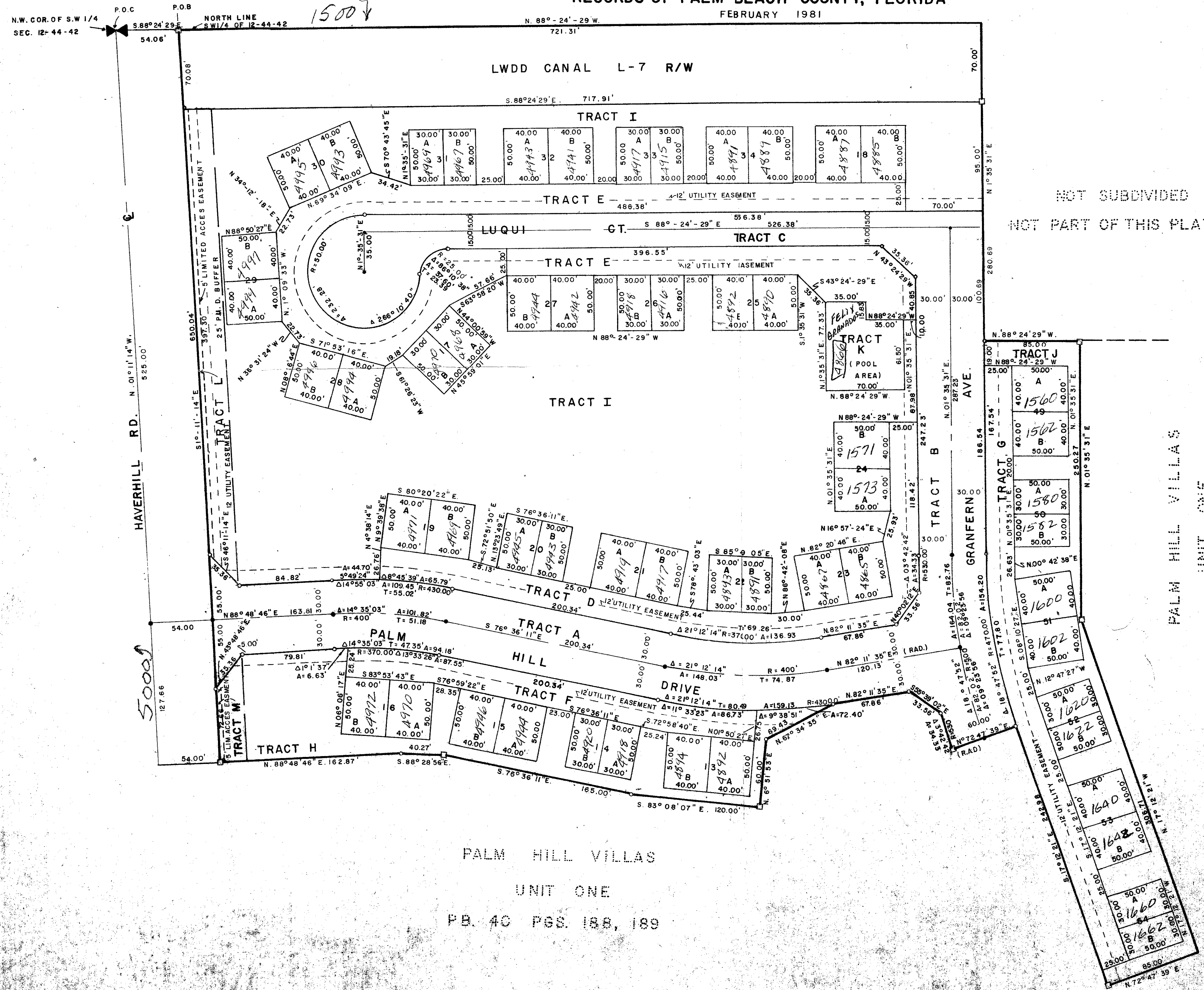
42/99



PART OF A PLANNED UNIT DEVELOPMENT PALM HILL VILLAS UNIT TWO

A REPLAT OF A PORTION OF LOTS 5 & 6 BLOCK 3 SECTION 12 TOWNSHIP 44 SOUTH,
RANGE 42 EAST OF PALM BEACH PLANTATIONS SUBDIVISION AS
RECORDED IN PLAT BOOK 10, PAGE 20 OF THE PUBLIC
RECORDS OF PALM BEACH COUNTY, FLORIDA

FEBRUARY 1981



PB. 40 PGS. 188, 189

0290-301

Palm Hill Villas #2
42/99