

42/53

53

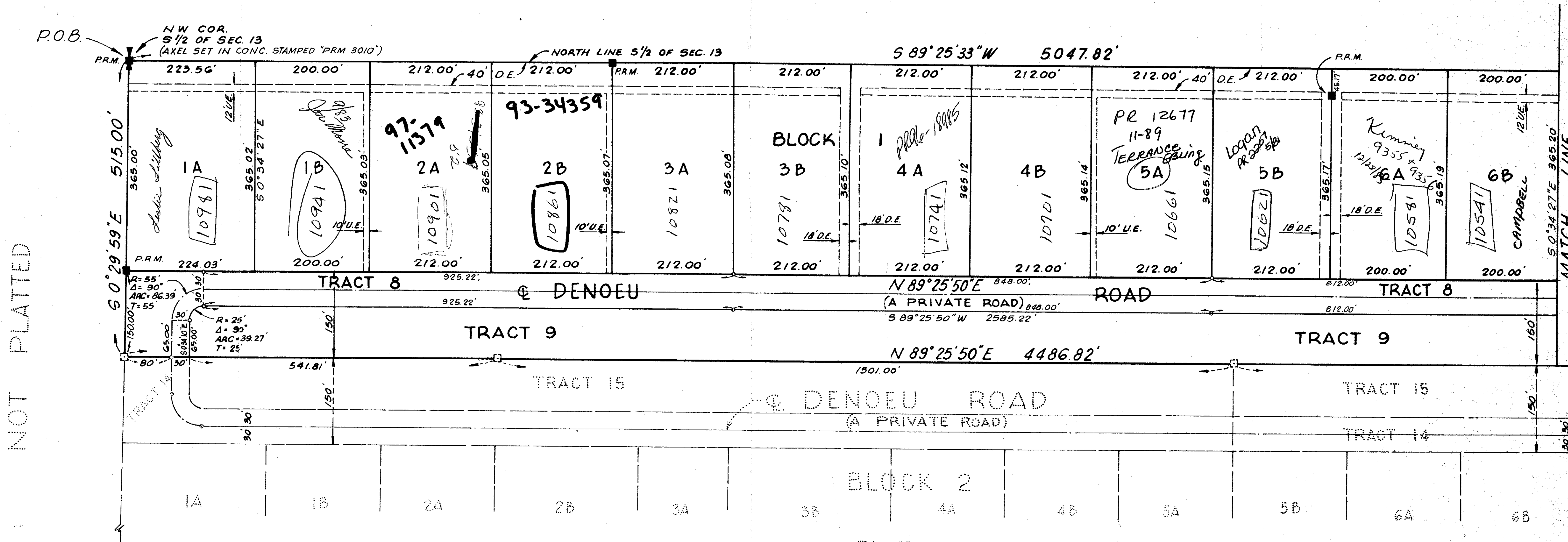
PLAT NO. 2 (A PLANNED UNIT DEVELOPMENT) WILLIS GLIDERPORT

BEING A SUBDIVISION OF A PORTION OF THE S 1/2 OF
SECTION 13, TOWNSHIP 45 SOUTH, RANGE 41 EAST
PALM BEACH COUNTY, FLORIDA

IN 3 SHEETS SHEET NO. 3



NOT PLATTED



NOT PLATTED

NOTES:

- = FOUND PERMANENT REFERENCE MONUMENT (P.R.M.) P.L.S. 3010
- = PERMANENT REFERENCE MONUMENT (P.R.M.)
- = PERMANENT CONTROL POINT (P.C.P.)
- D.E. = DRAINAGE EASEMENT
- U.E. = UTILITY EASEMENT

BEARING REFERENCE: ALL BEARINGS REFER TO ASSUMED SOUTH 89°-25'-33" WEST ALONG THE NORTH LINE OF THE SOUTH ONE-HALF OF SECTION 13, TWP. 45 S., RGE. 41 E.

THERE SHALL BE NO BUILDINGS OR STRUCTURES PLACED ON UTILITY EASEMENTS.

THERE SHALL BE NO TYPE OF CONSTRUCTION OR THE PLANTING OF TREES OR SHRUBS ON DRAINAGE EASEMENTS.

RESTRICTIONS, RESERVATIONS AND RESTRICTIVE COVENANTS FOR THIS PLAT ARE PROVIDED IN THE APPLICABLE WILLIS GLIDERPORT PROPERTY OWNERS' ASSOCIATION, INC. DOCUMENTS AS RECORDED IN O.R.B. 2647 PGS. 500-526.

PLAT NO. 1
WILLIS GLIDERPORT
PB. 32, PG. 14-148

AREA OF BLOCK 1 = 35.191 AC.
AREA OF TRACT 8 = 6.637 AC.
AREA OF TRACT 9 = 8.165 AC.
AREA OF TRACT 10 = 1.243 AC.
TOTAL AREA = 51.236 AC.

TOTAL DWELLING UNIT SITES = 20
DENSITY = 0.57 UNITS PER ACRE

Collect.
Pet. 80-146
1000-019