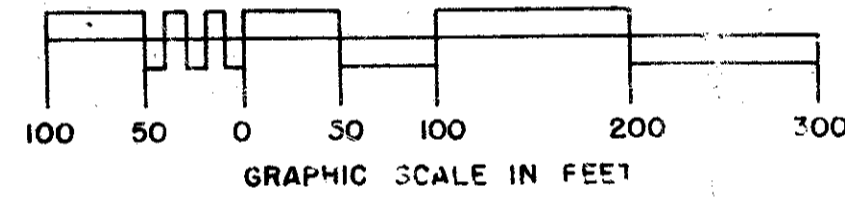


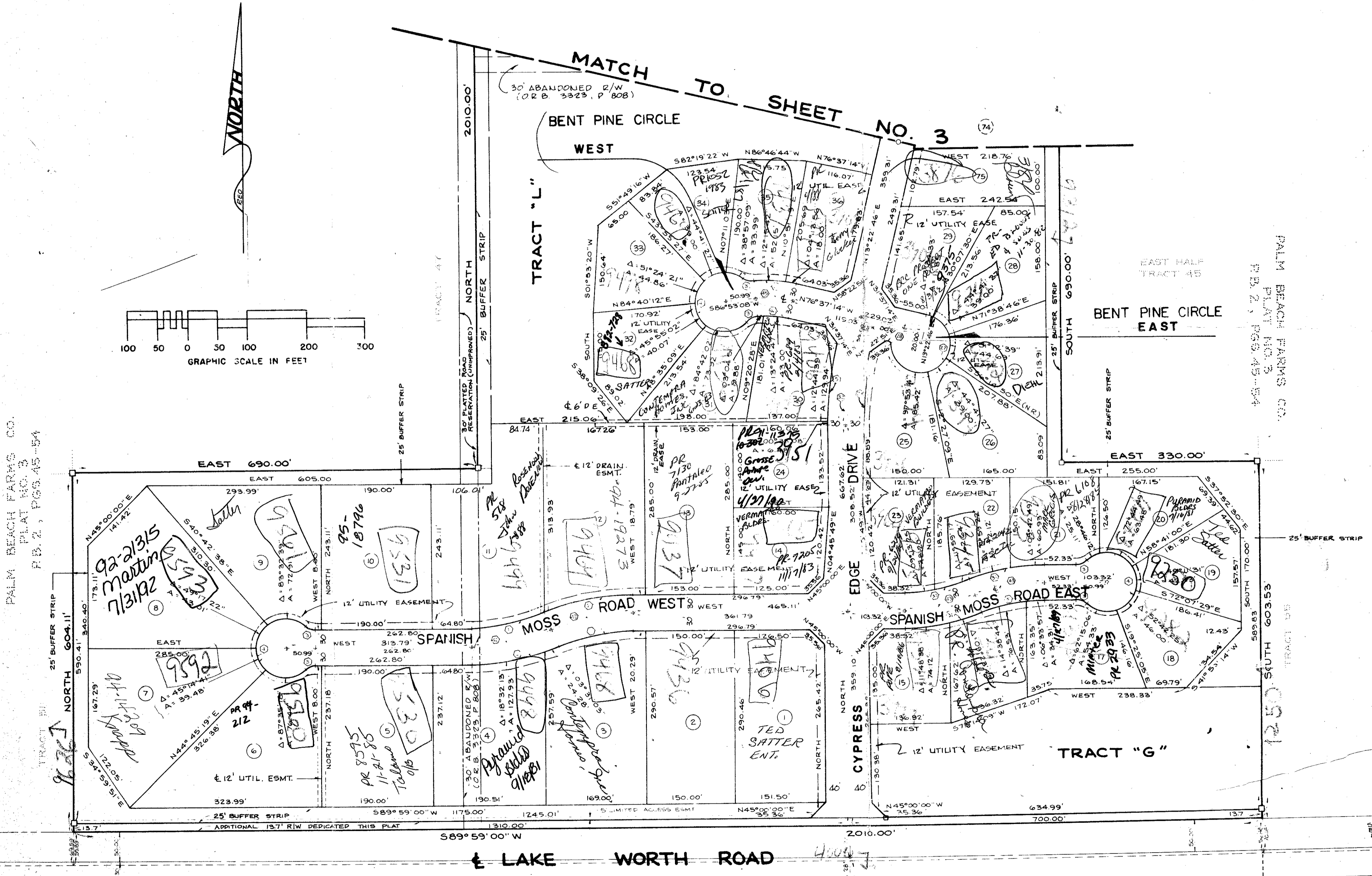
42/29

29

A PLANNED UNIT DEVELOPMENT
CYPRESS TRAILS, P.U.D.
 BEING A RE-PLAT OF A PORTION OF BLOCK 25,
 PALM BEACH FARMS CO., PLAT NO. 3
 AS RECORDED IN PLAT BOOK 2, PAGES 45-54
 SHEET 2 OF 3 MARCH, 1981



CURVE DATA				
NO.	DELTA	RADIUS	TANGENT	CHORD
1	22°03'17"	335.41	65.36	129.11
2	22°03'17"	395.42	77.06	152.21
3	42°50'00"	25.00	9.81	18.26
4	265°40'00"	50.00	53.93	231.84
5	13°22'46"	584.18	68.52	136.42
6	16°29'38"	243.68	35.32	70.15
7	43°53'04"	440.00	177.26	337.01
8	30°30'18"	700.00	190.87	372.69
9	132°50'00"	25.00	57.27	57.96
10	90°00'00"	85.00	85.00	133.52
11	30°30'18"	640.00	174.51	340.74
12	03°20'16"	500.00	14.57	29.13
13	07°56'43"	277.49	19.27	38.48
14	07°56'43"	337.49	23.44	46.80
15	16°52'13"	367.19	54.45	108.12
16	16°52'13"	307.59	45.61	90.57
17	90°00'00"	40.00	40.00	62.83
18	90°00'00"	100.00	100.00	157.08
19	22°53'39"	474.30	96.04	189.52
20	22°53'39"	414.30	83.89	165.55
21	90°00'00"	160.00	160.00	251.33
22	90°00'00"	100.00	100.00	157.08
23	16°52'13"	367.59	54.51	108.24
24	16°52'13"	307.19	45.56	90.45
25	22°41'40"	350.25	70.29	138.73
26	28°30'55"	500.00	127.06	248.84
27	25°20'38"	50.00	68.75	219.96
28	72°03'18"	7.81	5.68	9.19
29	13°22'46"	524.18	61.48	122.41
30	21°12'41"	299.40	56.06	110.84
31	21°12'41"	339.39	67.38	132.29
32	13°22'46"	554.18	65.00	129.41
33	43°53'04"	470.00	189.34	359.99
34	30°30'18"	670.00	182.69	356.72
35	90°00'00"	55.00	55.00	86.39
36	22°41'40"	380.25	76.31	150.62
37	16°52'13"	337.19	50.00	99.28
38	16°52'13"	337.59	50.06	99.40
39	90°00'00"	70.00	70.00	109.96
40	90°00'00"	130.00	130.00	204.20
41	22°53'39"	444.30	89.97	177.53
42	22°03'17"	365.41	71.21	140.66
43	21°12'41"	329.40	61.68	121.95
44	07°56'43"	307.49	21.35	42.64
45	16°29'38"	213.68	30.97	61.51
46	16°29'38"	183.68	26.62	52.88



TURNOUT REQUIRED

0235-000 IMPACT FEE

Per. 80-60

2056 17

Pay to City

10 45

Collect

42/29

Field Book No.	Pg.	ROBERT E. OWEN & ASSOCIATES, INC.	Job No.	80-106
Design	L. GEARY	ENGINEERS - PLANNERS - SURVEYORS	Scale	1" = 100'
Drawn	R. DEAN	WEST PALM BEACH FLORIDA	Date	MARCH, 1981
Checked		Not to be used in Construction until Approved.	Sheet of 3	2
Approved			File No.	BF-233

PALM BEACH FARMS CO.
 PLAT NO. 3
 P.B. 2, PAGES 45-54

PALM BEACH FARMS CO.
 PLAT NO. 3
 P.B. 2, PAGES 45-54

SOUTH BOUNDARY LINE OF BLOCK 25 AS PLATTED P.B. 2, PG. 47

THE HUNT P.B. 92, PAGES 119-125