

41-185

# JONATHAN'S LANDING PLAT FOUR P.U.D.

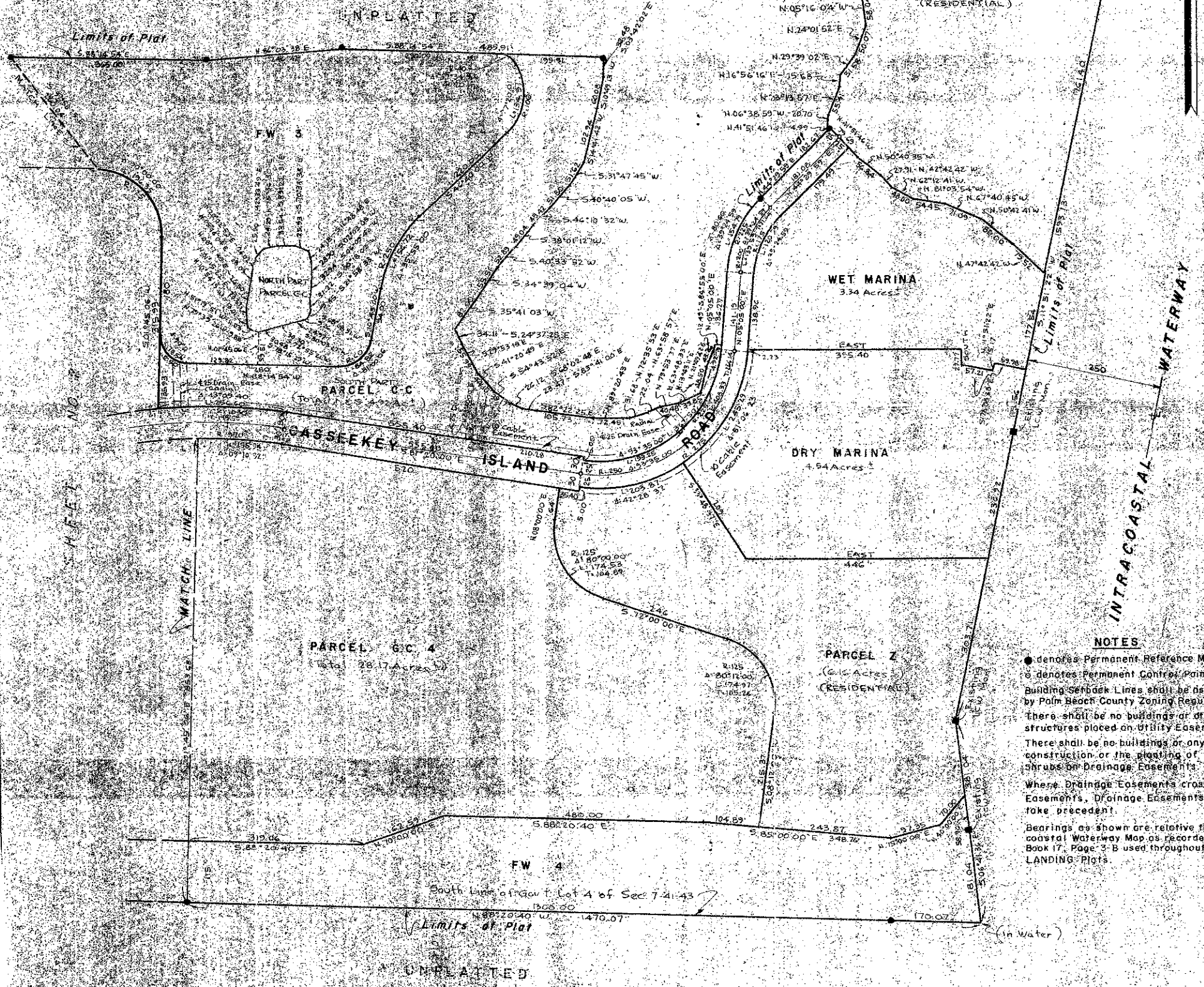
IN PART OF SECTION 7, TWP. 41 S., RGE. 43 E.  
PALM BEACH COUNTY, FLORIDA  
IN 3 SHEETS SHEET NO. 3

GEE & JENSON  
ENGINEERS ARCHITECTS-PLANNERS, INC.  
WEST PALM BEACH, FLORIDA  
FEBRUARY, 1980



185

STATE OF FLORIDA  
COUNTY OF PALM BEACH  
This Plat was filed for record on \_\_\_\_\_  
this \_\_\_\_\_ day of \_\_\_\_\_, 1980  
and approved by \_\_\_\_\_ Plat Book No. \_\_\_\_\_  
of \_\_\_\_\_  
Notary Public, Clerk, Circuit Court  
By \_\_\_\_\_ D.C.



### NOTES

- denotes Permanent Reference Monument
- denotes Permanent Control Point
- Building Setback Lines shall be as required by Palm Beach County Zoning Regulations.
- There shall be no buildings or other structures placed on Utility Easements.
- There shall be no buildings or any kind of construction or the planting of trees or shrubs on Drainage Easements.
- Where Drainage Easements cross Utility Easements, Drainage Easements shall take precedent.
- Bearings as shown are relative to Intra-coastal Waterway Map as recorded in Plat Book 17, Page 3-B used throughout JONATHAN'S LANDING Plots.

