

691-115

PLAT NO. 12 EASTPOINTE SUBDIVISION

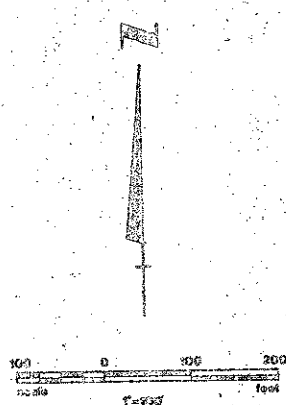
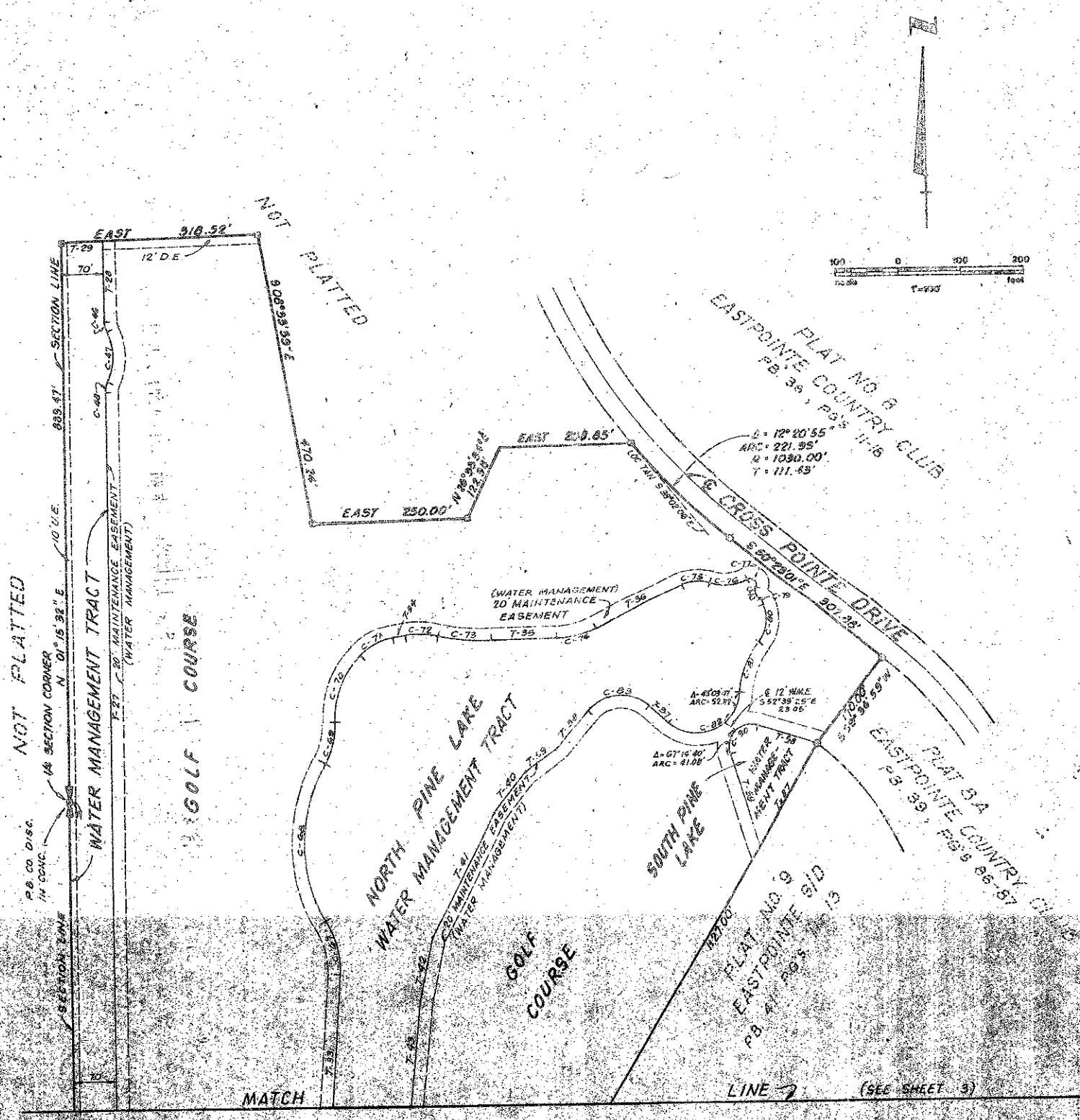
(A PLANNED UNIT DEVELOPMENT)

IN SECTIONS 27 AND 34, TWP. 41 SOUTH, RGE. 42 EAST
PALM BEACH COUNTY, FLORIDA

169

IN 5 SHEETS

SHEET 2



CURVE DATA			CURVE DATA		
NO.	RADIUS	DELTA	NO.	RADIUS	DELTA
C-1	10.30	136°-40'-40"	C-69	120.00	32°-06'-47"
C-2	90.30	35°-48'-27"	C-70	150.00	45°-27'-01"
C-3	130.00	75°-07'-00"	C-71	90.00	37°-40'-59"
C-4	150.00	76°-24'-02"	C-72	150.00	26°-33'-09"
C-5	40.00	84°-52'-51"	C-73	350.00	15°-53'-53"
C-6	140.00	35°-44'-23"	C-74	180.00	37°-42'-09"
C-7	145.00	46°-31'-58"	C-75	50.80	57°-38'-39"
C-8	140.00	27°-07'-20"	C-76	80.00	50°-47'-26"
C-9	25.00	88°-49'-38"	C-77	10.00	162°-36'-07"
C-10	150.00	8°-25'-11"	C-78	20.00	74°-36'-01"
C-11	370.00	41°-24'-18"	C-79	70.00	29°-56'-50"
C-12	150.00	6°-07'-09"	C-80	60.00	58°-41'-56"
C-13	150.00	67°-30'-41"	C-81	150.00	33°-57'-42"
C-14	90.00	61°-53'-11"	C-82	70.00	134°-41'-50"
C-15	30.00	1°-21'-24"	C-83	70.00	87°-11'-0"
C-16	50.00	32°-55'-49"	C-84	70.00	63°-26'-33"
C-17	150.00	39°-15'-07"	C-85	40.00	47°-29'-23"
C-18	20.00	125°-32'-50"	C-86	37.50	75°-24'-53"
C-19	40.00	84°-15'-39"	C-87	2.50	75°-24'-53"
C-20	75.00	37°-57'-55"	C-88	75.00	37°-29'-23"
C-21	130.00	54°-10'-40"	C-89	35.00	63°-26'-33"
C-22	95.00	72°-04'-52"	C-90	35.00	122°-52'-34"
C-23	150.00	19°-48'-18"	C-91	30.00	89°-18'-55"
C-24	270.00	30°-39'-21"	C-92	140.00	29°-16'-17"
C-25	190.00	37°-57'-55"	C-93	50.00	61°-24'-48"
C-26	95.00	66°-04'-14"	C-94	330.00	30°-50'-33"
C-27	80.00	29°-05'-00"	C-95	393.00	0°-50'-54"
C-28	150.00	38°-41'-38"	C-96	185.00	13°-58'-34"
C-29	90.00	34°-08'-46"	C-97	90.00	79°-14'-31"
C-30	20.00	155°-47'-19"	C-98	150.00	77°-02'-50"
C-31	140.00	60°-21'-06"	C-99	70.00	35°-33'-23"
C-32	140.00	25°-11'-41"	C-100	20.00	102°-43'-26"
C-33	150.00	42°-19'-50"	C-101	20.00	138°-47'-01"
C-34	150.00	36°-08'-22"	C-102	60.00	47°-51'-19"
C-35	140.00	34°-03'-42"	C-103	180.30	63°-25'-28"
C-36	00.00	50°-31'-56"	C-104	300.30	63°-25'-28"
C-37	50.00	76°-50'-33"	C-105	40.30	106°-04'-27"
C-38	50.00	52°-11'-53"	C-106	40.30	137°-39'-08"
C-39	40.00	18°-42'-18"	C-107	40.30	72°-02'-08"
C-40	100.00	58°-12'-48"	C-108	50.30	69°-15'-22"
C-41	40.00	28°-18'-01"	C-109	150.00	16°-01'-32"
C-42	40.00	47°-25'-42"	C-110	430.00	31°-24'-18"
C-43	150.00	34°-03'-37"	C-111	350.00	30°-50'-33"
C-44	90.00	37°-59'-50"	C-112	395.00	49°-09'-06"
C-45	40.00	23°-03'-54"	C-113	555.00	50°-00'-00"
C-46	40.00	25°-31'-33"	C-114	50.00	27°-24'-50"
C-47	90.00	53°-03'-06"	C-115	100.00	11°-29'-40"
C-48	40.00	25°-21'-31"	C-116	270.00	25°-04'-01"
C-49	80.00	51°-51'-29"	C-117	510.00	7°-02'-11"
C-50	313.00	31°-11'-17"	C-118	40.00	1°-51'-24"
C-51	190.00	35°-40'-13"	C-119	90.00	16°-42'-11"
C-52	120.00	38°-07'-57"	C-120	160.00	5°-25'-28"
C-53	120.00	12°-54'-25"			
C-54	20.00	35°-51'-50"			
C-55	20.00	74°-58'-30"			
C-56	110.00	4°-30'-22"			
C-57	90.00	71°-57'-49"			
C-58	90.00	24°-38'-25"			
C-59	60.00	50°-29'-45"			
C-60	270.00	32°-41'-22"			
C-61	100.00	69°-42'-28"			
C-62	50.00	41°-28'-52"			
C-63	140.00	19°-21'-29"			
C-64	30.00	49°-52'-26"			
C-65	90.00	4°-26'-02"			
C-66	110.00	31°-21'-37"			
C-67	130.00	15°-13'-01"			
C-68	240.00	61°-44'-14"			

TANGENT		
NO.	BEARING	LENGTH
T-1	EAST	177.44
T-2	S 83°-51'-08" E	237.49
T-3	S 44°-08'-42" E	91.00
T-4	S 24°-44'-03" E	170.76
T-5	N 66°-26'-10" E	110.23
T-6	N 17°-45'-09" W	294.33
T-7	N 59°-09'-17" W	491.79
T-8	N 88°-31'-00" W	137.40
T-9	S 10°-45'-36" W	31.05
T-10	N 17°-45'-09" W	41.01
T-11	S 17°-45'-09" E	2.82
T-12	S 17°-45'-09" E	69.07
T-13	S 25°-54'-17" E	261.62
T-14	S 45°-43'-35" E	370.56
T-15	S 19°-47' W	170.39
T-16	N 36°-19'-37" E	189.70
T-17	N 69°-17'-14" W	502.96
T-18	S 17°-45'-09" E	263.46
T-19	N 36°-52'-15" E	37.00
T-20	S 6°-50'-42" E	151.00
T-21	N 14°-39'-20" W	68.68
T-22	S 46°-40'-06" E	139.88
T-23	N 22°-27'-25" E	163.25
T-24	N 17°-45'-41" E	96.49
T-25	N 0°-00'-31" E	151.00
T-26	N 1°-15'-36" E	52.32
T-27	S 1°-15'-32" E	148.27
T-28	N 1°-15'-32" E	130.47
T-29	N 89°-41'-39" E	70.02
T-30	N 53°-55'-27" E	163.50
T-31	S 53°-55'-27" W	49.57
T-32	N 5°-48'-38" E	288.10
T-33	N 81°-20'-44" E	20.02
T-34	N 65°-27'-31" E	154.94
T-35	N 49°-18'-16" E	43.52
T-36	S 43°-10'-49" W	60.00
T-37	S 55°-58'-45" W	57.96
T-38	S 39°-05'-38" W	42.46
T-39	S 10°-32'-45" W	278.44
T-40	S 14°-15'-19" W	402.45
T-41	S 6°-39'-15" W	180.79
T-42	S 13°-40'-59" W	80.00
T-43	N 60°-32'-56" E	83.79
T-44	N 47°-29'-22" E	39.20
T-45	N 60°-32'-56" E	231.69
T-46	N 75°-24'-53" E	73.56
T-47	N 77°-00'-50" E	75.20
T-48	N 66°-49'-20" E	63.85
T-49	S 57°-45'-09" E	40.50
T-50	S 70°-36'-45" E	37.98
T-51	S 77°-40'-20" W	74.21
T-52	S 75°-24'-53" W	72.71
T-53	S 77°-29'-23" W	21.69
T-54	S 80°-31'-56" W	37.19
T-55	S 72°-12'-30" W	36.68
T-56	N 16°-05'-05" W	247.64
T-57	N 22°-51'-17" W	60.23
T-58	S 22°-51'-17" E	52.49
T-59	S 68°-26'-18" W	38.31
T-60	S 14°-44'-03" W	193.48
T-61	S 10°-46'-28" W	56.45
T-62	S 12°-51'-10" W	229.66
T-63	S 12°-51'-10" W	90.46
T-64	S 48°-29'-33" E	289.11
T-65	EAST	12.60
T-66	N 28°-47'-01" E	156.31
T-67	N 88°-21'-07" E	156.31
T-68	S 18°-08'-25" W	409.27
T-69	S 28°-47'-01" W	184.19
T-70	S 30°-45'-28" W	51.89
T-71	N 1°-15'-32" W	221.36
T-72	S 59°-09'-17" E	3.60
T-73	S 59°-09'-17" E	380.10
T-74	S 69°-13'-12" W	565.51
T-75	S 66°-26'-18" W	106.80
T-76	N 13°-14'-11" E	160.00

0238-308