

41-68

PLAT NO. 10 EASTPOINTE SUBDIVISION

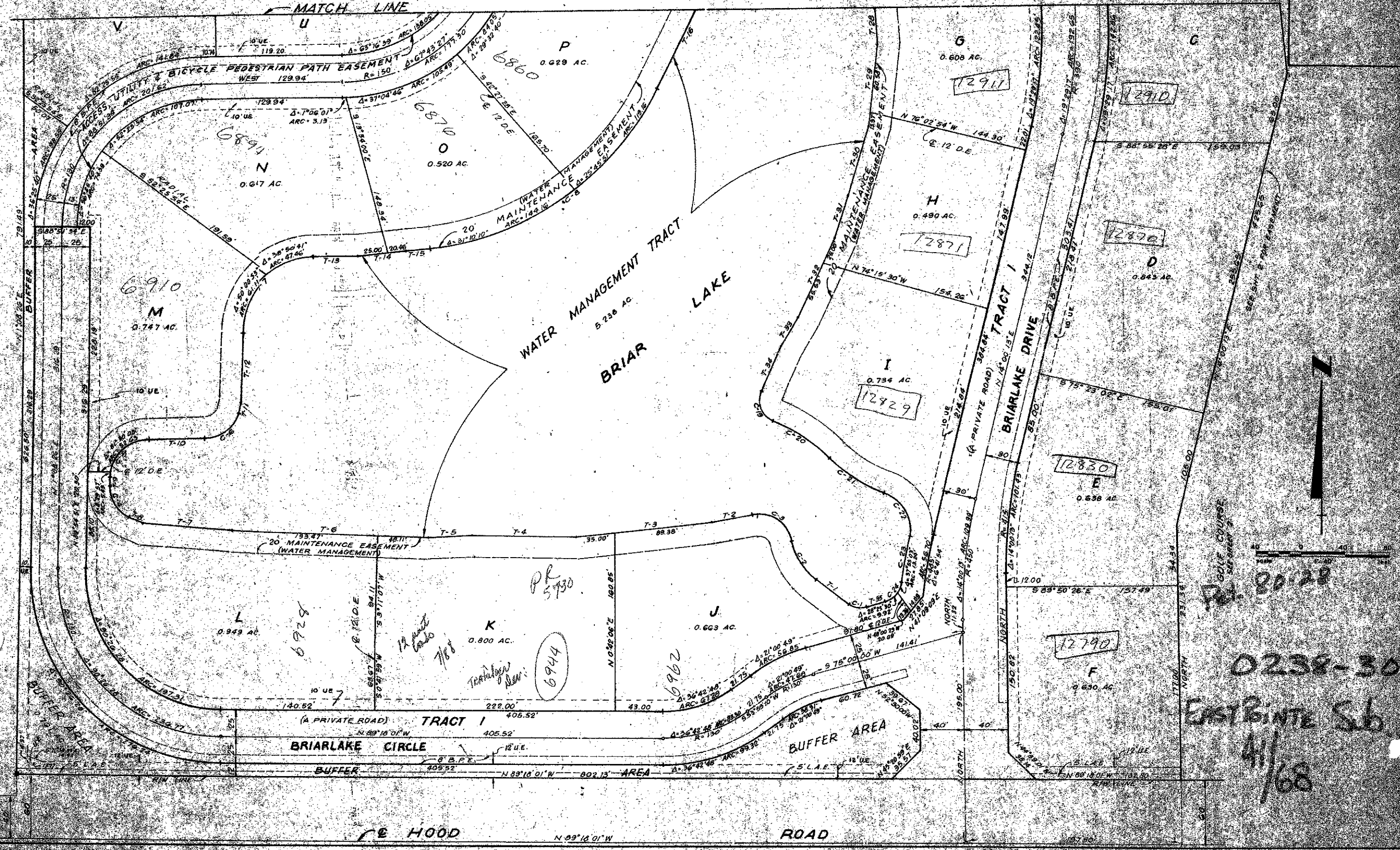
68

(A PLANNED UNIT DEVELOPMENT)
IN SECTIONS 27 AND 34, TOWNSHIP 41 SOUTH, RANGE 42 EAST
PALM BEACH COUNTY, FLORIDA

3 OF 4 SHEETS

SHEET 4

SEE SHEET 3



PR. 20-28
0238-300
EASTPOINTE SB
4/68