

41-33

33

CRICKLEWOOD ESTATES

A PLAT OF A PORTION OF SECT. 19 & 30, TWP. 47S, RGE. 42 E.
AND ALSO BEING A REPLAT OF LOTS 105, 106, 107, 108, BLOCK 78 PALM BEACH FARMS COMPANY PLAT NO. 3
PLAT BOOK 2, PAGE 53 OF THE PUBLIC RECORDS OF PALM BEACH COUNTY, FLORIDA
PALM BEACH COUNTY, FLORIDA

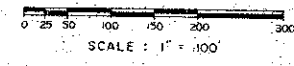
JOHN A. GRANT, JR., INC.

CONSULTING ENGINEERS & LAND SURVEYORS

BOCA RATON, FLORIDA

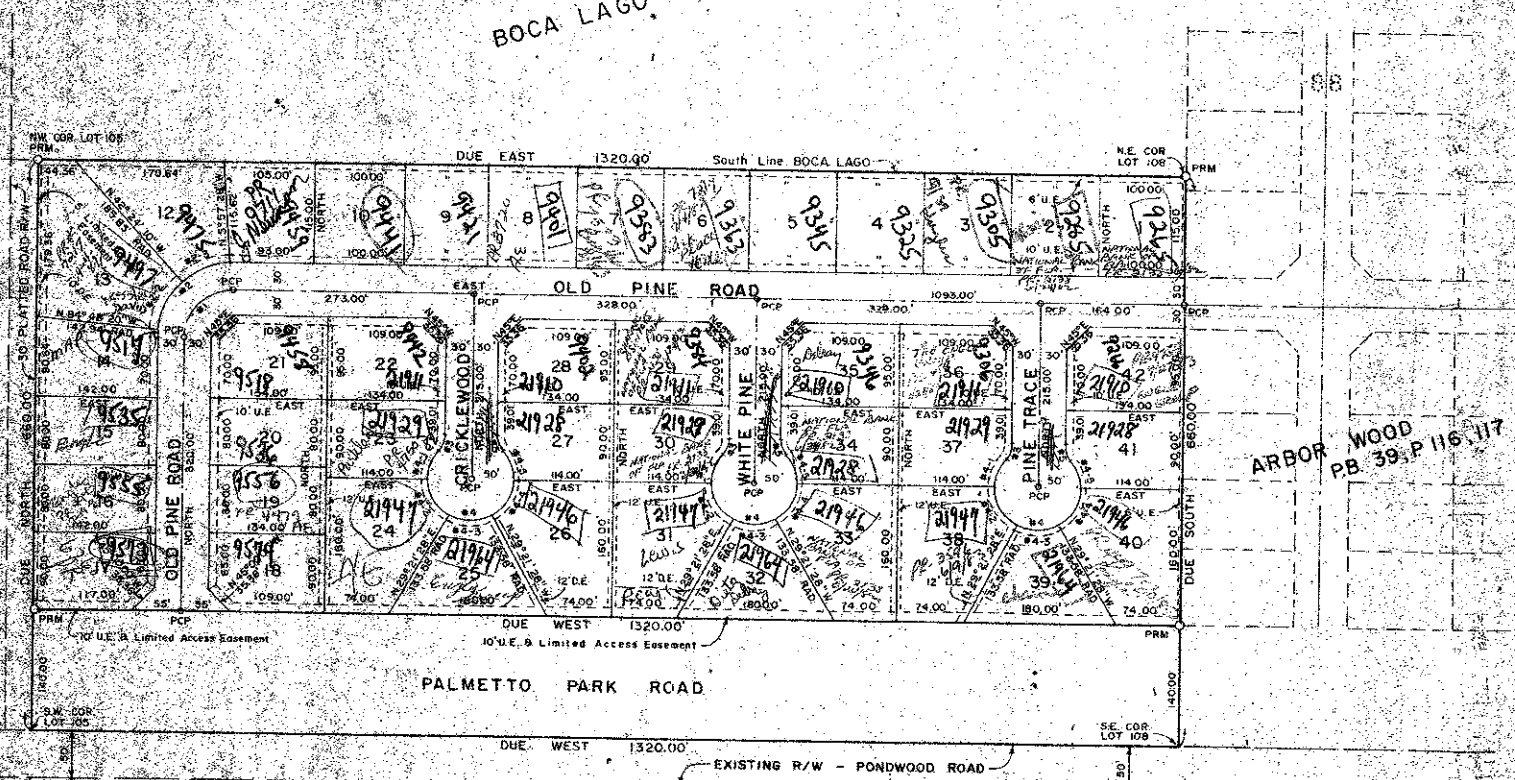
JANUARY, 1980

SHEET 3 OF 3



BOCA LAGO, P.B. 30, P. 248

PALM BEACH FARMS CO. PLAT NO. 3
P.B. 2, P. 53



STATISTICAL DATA

AREA OF LOTS	12,517 AC.
AREA OF PUBLIC ROAD R/W	7,483 AC.
TOTAL AREA THIS PLAT	20,000 AC.
NO. UNITS PROPOSED	42 UNITS
DENSITY PROPOSED	2.10 UNITS/AC.
LAND USE	SINGLE-FAMILY

0232-000

PALM BEACH FARMS CO. PLAT NO. 3
P.B. 2, P. 53

TABLE OF ARCS

NUMBER	RADIUS	ARC LENGTH	DELTA	TANGENT	CHORD	CHORD BEARING
1-1	56.00	80.89	96° 00' 51"	111.40	111.40	N 89° 59' 09" W
2	56.00	189.82	167° 00' 00"	111.40	111.40	N 89° 59' 09" W
2-1	49.00	7.26	8° 11' 40"	111.40	111.40	N 89° 59' 09" W
2-2	89.00	60.91	49° 24' 10"	111.40	111.40	N 89° 59' 09" W
2-3	49.00	60.91	49° 24' 10"	111.40	111.40	N 89° 59' 09" W
3	28.00	14.56	29° 00' 00"	111.40	111.40	N 89° 59' 09" W
4	50.00	291.48	167° 00' 00"	111.40	111.40	N 89° 59' 09" W
4-1	50.00	291.48	167° 00' 00"	111.40	111.40	N 89° 59' 09" W
4-2	50.00	291.48	167° 00' 00"	111.40	111.40	N 89° 59' 09" W
4-3	50.00	291.48	167° 00' 00"	111.40	111.40	N 89° 59' 09" W
4-4	50.00	291.48	167° 00' 00"	111.40	111.40	N 89° 59' 09" W
4-5	50.00	291.48	167° 00' 00"	111.40	111.40	N 89° 59' 09" W
4-6	50.00	291.48	167° 00' 00"	111.40	111.40	N 89° 59' 09" W

NOTES

1. All measurements are in feet and inches, rounded to the nearest hundredth of a foot.
2. The bearings are true bearings.
3. The distances are in feet and inches, rounded to the nearest hundredth of a foot.
4. The area of the lots is in acres, rounded to the nearest hundredth of an acre.
5. The area of the public road right-of-way is in acres, rounded to the nearest hundredth of an acre.
6. The total area of this plat is 20,000 acres.
7. The density proposed is 2.10 units per acre.
8. The land use is single-family.

Cricklewood Estates 4/80