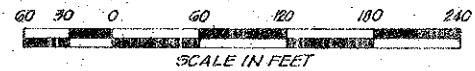


82-14

PREPARED BY
KEITH AND SCHNARS, P.A.
ENGINEERS, PLANNERS, SURVEYORS
115 N.E. 4TH AVENUE
FORT LAUDERDALE, FLORIDA
Thomas F. Schnars, P.E. #2206

TIMBERWALK SECTION THREE

A PORTION OF LOGGERS RUN A P.U.D.
BEING A RESUBDIVISION OF A PORTION OF TRACT G
BOUNDARY PLAT OF ORIOLE COUNTRY (P.B. 32, PGS 175-180)
SECTION 26, TOWNSHIP 47 SOUTH, RANGE 41 EAST
PALM BEACH COUNTY, FLORIDA



28

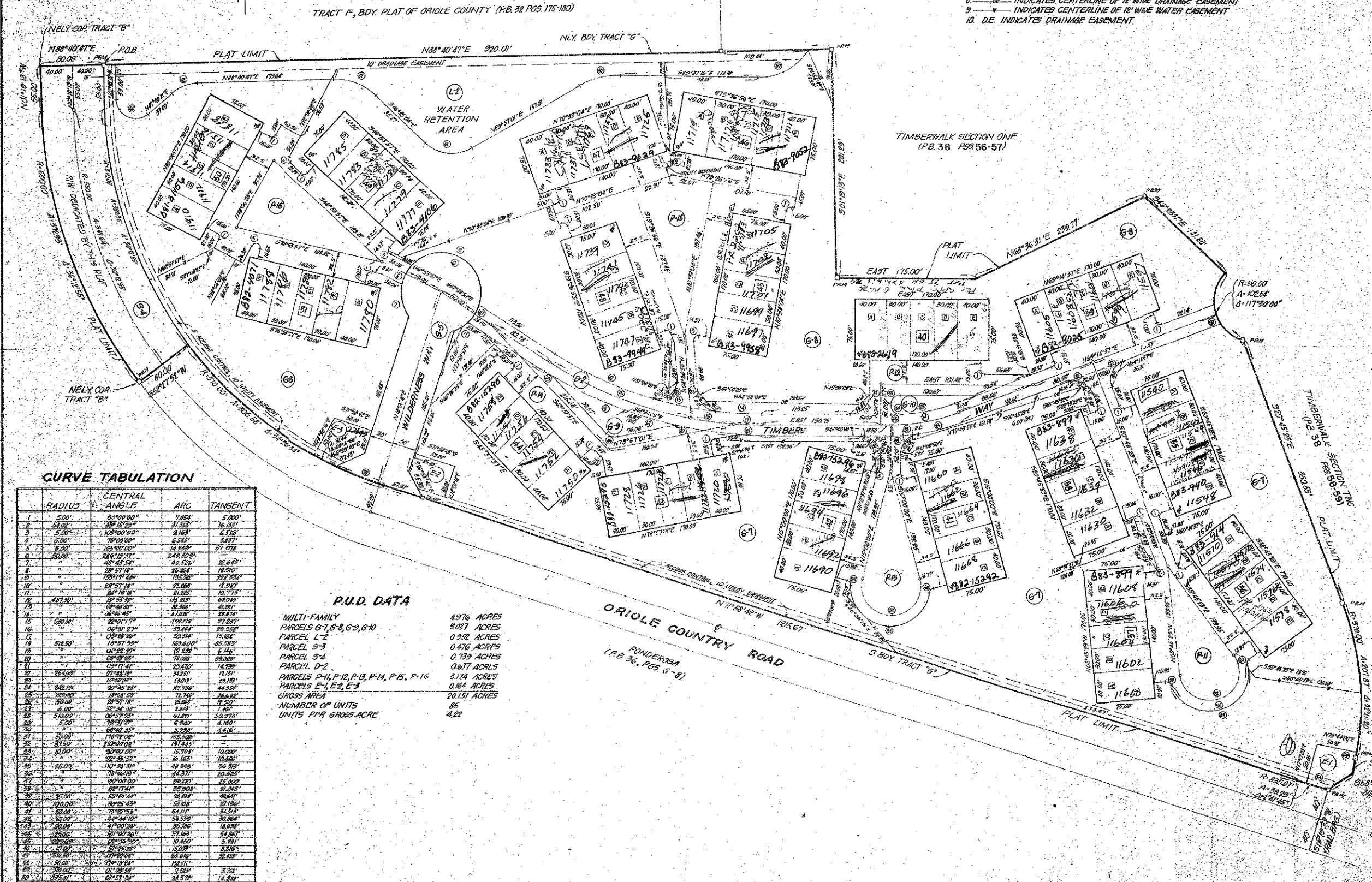
STATE OF FLORIDA
COUNTY OF PALM BEACH

THIS PLAT WAS FILED FOR
RECORD AT _____ THE
_____ DAY OF _____
1975, AND DULY RECORDED
IN PLAT BOOK _____ ON
PAGE _____

JOHN B. DUNKLE
CLERK OF CIRCUIT COURT

SURVEY NOTES:

1. \square PPM INDICATES PERMANENT REFERENCE MONUMENT
2. \circ PCP INDICATES PERMANENT CONTROL POINT
3. SURVEY DATA IN P.B. (11, PGS 38-49)
4. BEARINGS SHOWN HEREON ARE RELATIVE TO ASSUMED DATUM ON BOUNDARY PLAT OF ORIOLE COUNTRY (P.B. 32, PGS 175-180)
5. $\textcircled{1}$ INDICATES CURVE NUMBER
6. \textcircled{A} INDICATES UNIT LETTER
7. $\textcircled{40}$ INDICATES CLUSTER NUMBER
8. --- INDICATES CENTERLINE OF 12" WIDE DRAINAGE EASEMENT
9. --- INDICATES CENTERLINE OF 12" WIDE WATER EASEMENT
10. D.E. INDICATES DRAINAGE EASEMENT



CURVE TABULATION

RADIUS	CENTRAL ANGLE	ARC	TANGENT
5.00'	80°00'00"	7.854'	5.000'
5.00'	89°15'29"	8.133'	16.091'
5.00'	105°00'00"	9.425'	6.217'
5.00'	165°00'00"	14.589'	37.074'
50.00'	284°15'31"	249.808'	32.243'
"	48°45'54"	49.526'	18.961'
"	105°11'48"	135.308'	224.200'
10'	18°57'18"	35.060'	18.910'
11'	18°10'18"	31.025'	16.715'
12'	17°25'18"	28.215'	14.821'
14'	16°46'45"	24.681'	12.874'
15'	16°01'11"	22.477'	11.287'
16'	15°18'00"	20.454'	9.926'
17'	14°37'59"	18.600'	8.653'
18'	14°00'29"	16.912'	7.466'
19'	13°24'57"	15.388'	6.359'
20'	12°51'41"	14.020'	5.332'
22'	12°11'18"	12.811'	4.481'
24'	11°33'09"	11.752'	3.795'
25'	11°07'15"	10.842'	3.169'
26'	10°43'00"	10.058'	2.600'
28'	10°10'18"	9.384'	2.087'
30'	9°39'18"	8.814'	1.620'
32'	9°10'00"	8.341'	1.190'
34'	8°42'25"	7.958'	0.795'
36'	8°15'54"	7.658'	0.434'
38'	7°51'00"	7.434'	0.100'
40'	7°27'45"	7.279'	0.000'
42'	7°05'54"	7.188'	0.000'
44'	6°45'00"	7.156'	0.000'
46'	6°25'45"	7.179'	0.000'
48'	6°07'00"	7.252'	0.000'
50'	5°49'15"	7.371'	0.000'
52'	5°32'00"	7.532'	0.000'
54'	5°15'45"	7.741'	0.000'
56'	5°00'00"	8.000'	0.000'
58'	4°44'45"	8.308'	0.000'
60'	4°30'00"	8.664'	0.000'
62'	4°15'45"	9.068'	0.000'
64'	4°02'00"	9.520'	0.000'
66'	3°48'45"	10.020'	0.000'
68'	3°36'00"	10.568'	0.000'
70'	3°23'45"	11.164'	0.000'
72'	3°12'00"	11.808'	0.000'
74'	3°00'45"	12.500'	0.000'
76'	2°50'00"	13.240'	0.000'
78'	2°39'45"	14.028'	0.000'
80'	2°30'00"	14.864'	0.000'
82'	2°20'45"	15.748'	0.000'
84'	2°12'00"	16.680'	0.000'
86'	2°03'45"	17.660'	0.000'
88'	1°56'00"	18.688'	0.000'
90'	1°48'45"	19.764'	0.000'
92'	1°42'00"	20.888'	0.000'
94'	1°35'45"	22.060'	0.000'
96'	1°30'00"	23.280'	0.000'
98'	1°24'45"	24.548'	0.000'
100'	1°20'00"	25.864'	0.000'

P.U.D. DATA

MULTI-FAMILY
PARCELS G-7, G-8, G-9, G-10
PARCEL L-2
PARCEL S-3
PARCEL S-4
PARCEL D-2
PARCELS P-11, P-12, P-13, P-14, P-15, P-16
PARCELS E-1, E-2, E-3
GROSS AREA
NUMBER OF UNITS
UNITS PER GROSS ACRE

4.976 ACRES
9.027 ACRES
0.252 ACRES
0.476 ACRES
0.739 ACRES
0.637 ACRES
3.174 ACRES
0.864 ACRES
20.151 ACRES
85
4.28

0275-305