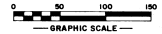
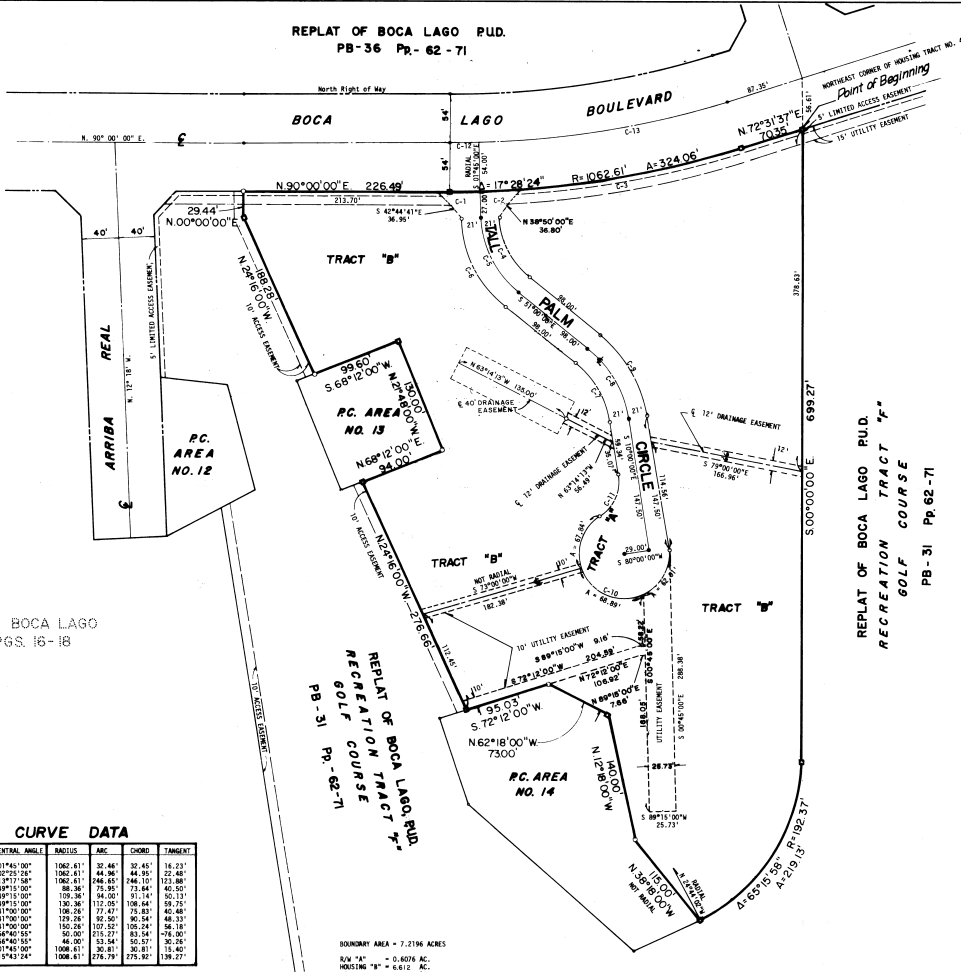


STATE OF FLORIDA
COUNTY OF PALM BEACH
THIS PLAN WAS FILED FOR
RECORD AT
RECORD # 178-36 Pp. 62-71
AD. 1986 AND DULY RE-
CORDED IN PLAT BOOK
ON PAGES AND
JOHN B. DUNLEAVY, CLERK
CIRCUIT COURT, FLA.



A PART OF A P.L.D.
THE PALMS OF BOCA LAGO

BEING A REPLAT OF HOUSING TRACT NO. 4, REPLAT OF BOCA LAGO,
PLAT BOOK 31, PAGES 62 THROUGH 71, INCLUSIVE, PUBLIC RECORDS,
PALM BEACH COUNTY, FLA., LYING IN SECTION 20, TOWNSHIP 47 SOUTH,
RANGE 42 EAST, PALM BEACH COUNTY, FLORIDA.
JANUARY, 1980



This is not a certified copy

HORIZONS OF BOCA LAGO
P.B. 32, PGS. 16-18

CURVE DATA

CURVE NO.	CENTRAL ANGLE	ADIUS	ARC	CHORD	TANGENT
C-1	07°45'00"	1062.611	32.445	32.445	16.231
C-2	02°25'24"	1062.611	44.965	44.965	22.487
C-3	13°47'58"	1062.611	246.663	146.101	133.887
C-4	48°15'00"	88.38	73.951	73.844	40.520
C-5	48°15'00"	109.281	94.020	61.44	50.131
C-6	49°15'00"	130.36	112.051	108.64	59.75
C-7	41°00'00"	109.28	77.671	75.923	40.487
C-8	41°00'00"	119.24	82.501	80.54	48.131
C-9	41°00'00"	150.28	102.521	100.24	56.181
C-10	236°40'55"	50.00	215.271	83.24	176.00
C-11	65°40'55"	48.00	33.44	50.21	30.28
C-12	07°45'00"	1068.611	30.84	30.84	15.40
C-13	15°43'24"	1068.611	226.781	125.92	198.271

REPLAT OF BOCA LAGO P.L.D.
RECREATION TRACT "F"
GOLF COURSE
PB-31 Pp. 62-71

BOUNDARY AREA = 7.2196 ACRES
R/W "A" = 0.6076 AC.
HOUSING "B" = 6.612 AC.

REPLAT OF BOCA LAGO P.L.D.
RECREATION TRACT "F"
GOLF COURSE
PB-31 Pp. 62-71

THIS INSTRUMENT WAS PREPARED BY ROBERT J. WATSON IN THE OFFICES OF BENCH MARK LAND SURVEYING AND MAPPING, INC., 2883 EXCHANGE COURT, SUITE "A", WEST PALM BEACH, FLORIDA, 33409. PHONE 689-2111.

BENCH MARK
land surveying and mapping, inc.

CONRAD W. SCHEFFER CONSULTING ENGINEERS, INC.
PALM BEACH COUNTY, FLORIDA

THE PALMS OF BOCA LAGO

DATE	BY	SCALE	SHEET NO.	TOTAL SHEETS
8-28-79	RM	1"=50'	5405	5400
				2 of 2