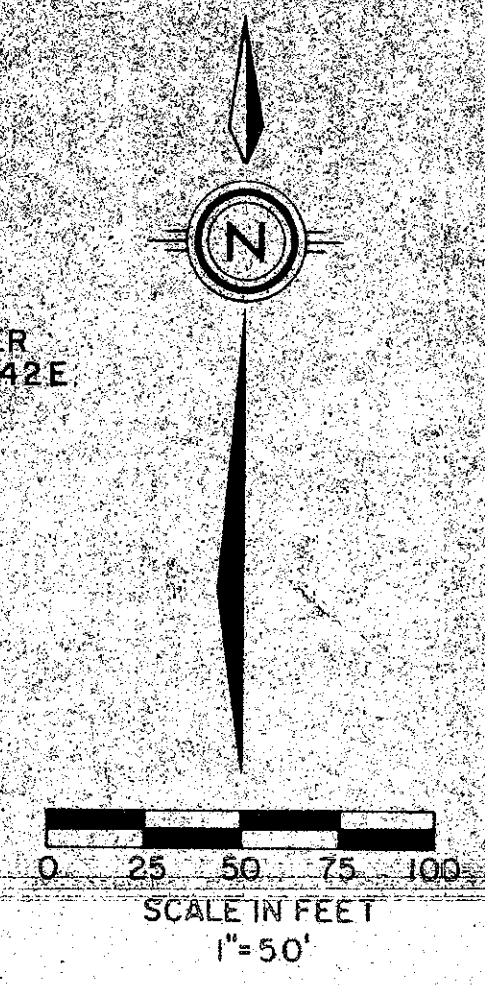


40-104

PLAT OF  
**CONCEPT HOMES OF LANTANA PLAT NO. 4**  
 BEING A PORTION OF SECTION I, TOWNSHIP 45 SOUTH, RANGE 42 EAST.  
 PALM BEACH COUNTY, FLORIDA  
 JANUARY, 1980  
 SHEET 3 OF 3

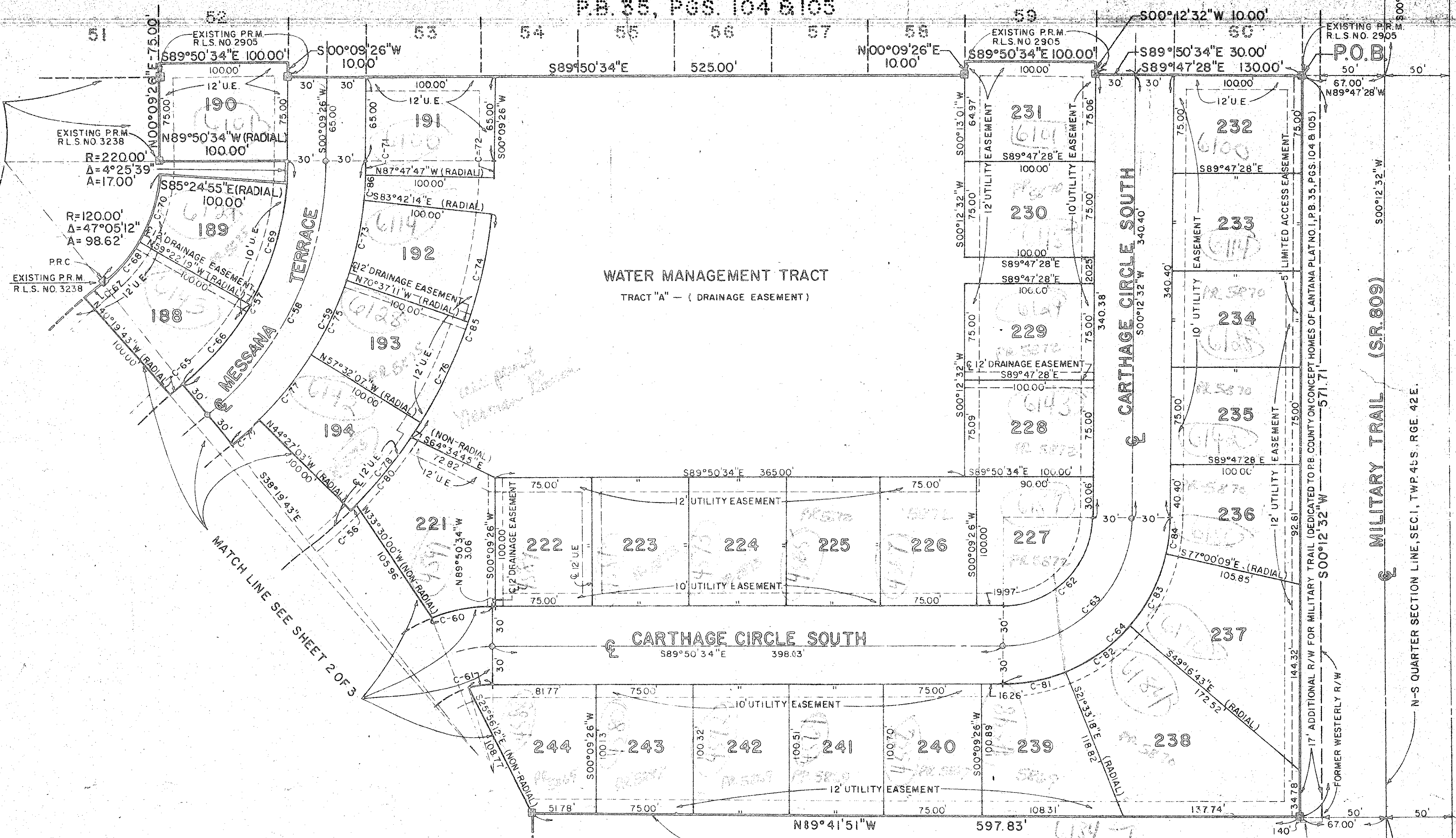
164

STATE OF FLORIDA  
 COUNTY OF PALM BEACH  
 THIS PLAT WAS FILED FOR  
 RECORD AT  
 THIS DAY OF  
 AD. 1980 AND DULY RECORDED  
 IN PLAT BOOK ON PAGES  
 AND  
 JOHN B. BUNKLE, CLERK  
 CIRCUIT COURT  
 BY: DC.



CONCEPT HOMES OF LANTANA PLAT NO. 1  
 P.B. 85, PGS. 104 & 105

CONCEPT HOMES  
 OF LANTANA  
 PLAT NO. 3  
 P.B. 59 PGS. 123-125



C.NO.	RADIUS	DELTA	ARC
56.	380.00'	01°03'13"	6.99'
57.	220.00'	51°30'51"	197.80'
58.	250.00'	51°30'51"	224.77'
59.	280.00'	51°30'51"	251.75'
60.	130.00'	20°47'20"	47.17'
61.	70.00'	14°46'27"	18.05'
62.	70.00'	89°56'54"	109.89'
63.	100.00'	89°56'54"	156.99'
64.	130.00'	89°56'54"	204.09'
65.	374.61'	02°00'00"	13.08'
66.	220.00'	21°02'36"	80.80'
67.	474.61'	02°00'00"	16.57'
68.	120.00'	21°02'36"	44.07'
69.	220.00'	26°02'36"	100.00'
70.	120.00'	26°02'36"	54.55'
71.	280.00'	02°02'47"	10.00'
72.	380.00'	02°02'47"	13.57'
73.	280.00'	13°05'04"	63.94'
74.	380.00'	13°05'04"	86.78'
75.	280.00'	13°05'04"	63.94'
76.	380.00'	13°05'04"	86.78'
77.	280.00'	13°05'04"	63.94'
78.	380.00'	13°05'04"	86.78'
79.	280.00'	06°07'20"	29.92'
80.	380.00'	10°01'16"	66.46'
81.	130.00'	21°42'44"	49.26'
82.	130.00'	27°43'26"	62.90'
83.	130.00'	27°43'26"	62.90'
84.	130.00'	12°47'19"	29.02'
85.	380.00'	28°10'42"	186.89'
86.	280.00'	04°05'33"	20.00'

NORTH LINE OF THE SOUTH 270 FEET OF THE EAST  
 ONE-HALF OF THE SOUTHEAST ONE-QUARTER OF  
 THE NORTHWEST ONE-QUARTER OF SECTION I,  
 TWP 45 S., RGE 42 E.

UNPLATTED

0223-302  
 7.5-22  
 21-25  
 1/45/42

CENTER OF SECTION I, TWP 45S., RGE. 42E.  
 CALCULATED (PB COUNTY)

Meridian  
 Surveying and mapping inc.

2328 So. Congress Ave  
 Suite 2-D  
 West Palm Beach FL 33411  
 967-5600  
 CONCEPT HOMES  
 OF LANTANA  
 PLAT NO. 4