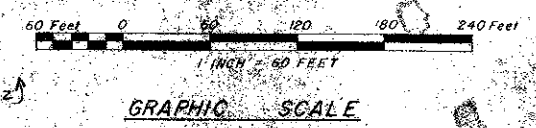
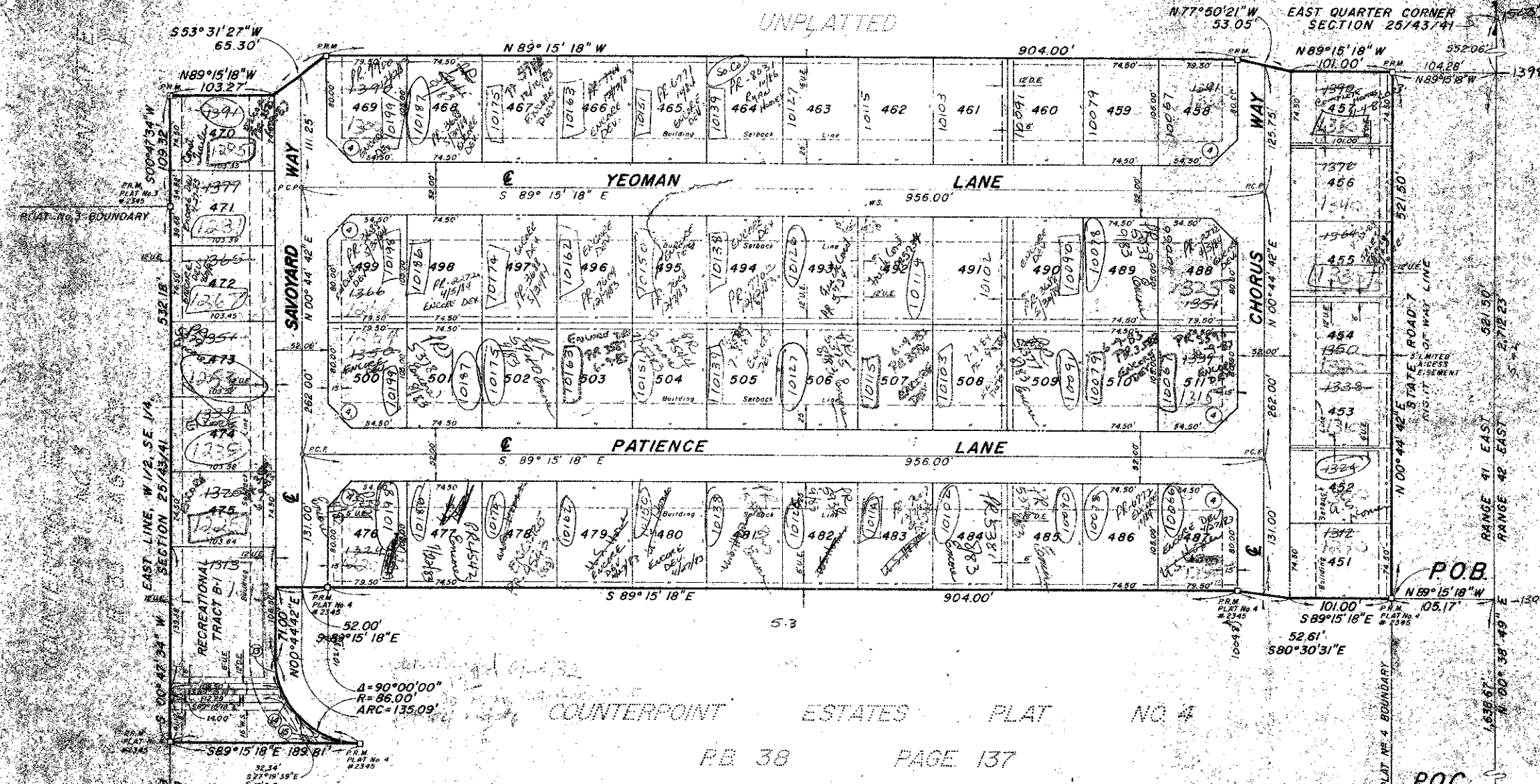


# COUNTERPOINT ESTATES PLAT No. 5

IN SECTION 25, TOWNSHIP 43 SOUTH, RANGE 41 EAST, PALM BEACH COUNTY, FLORIDA

140

40-140



BEARING DATUM  
ALL BEARINGS SHOWN HEREON ARE RELATED TO AN ASSUMED BEARING OF N 00° 30' 49" E ALONG THE EAST LINE OF SECTION 25, TOWNSHIP 43 SOUTH, RANGE 41 EAST.

CURVE DATA

CURVE NO.	RADIUS	DELTA	ARC	CHORD
(1)	1500'	50°00'00"	392'	253'
(2)	66.00'	2°02'33"	1.66'	31.41'
(3)	8600'	0°02'00"	51.35'	31.17'
(4)	8600'	0°02'33"	72.15'	31.05'

**LEGEND**  
 U.E. — INDICATES POWER AND/OR TELEPHONE EASEMENT  
 D.E. — INDICATES DRAINAGE EASEMENT  
 W.S. — INDICATES WATER AND/OR SANITARY SEWER EASEMENT  
 P.C.P. INDICATES PERMANENT CONTROL POINT  
 P.R.M. INDICATES PERMANENT REFERENCE MONUMENT

- NOTES**
1. NO BUILDING OR ANY KIND OF CONSTRUCTION OR TREES SHALL BE PLACED WITHIN EASEMENTS.
  2. DRAINAGE EASEMENTS TAKE PRECEDENCE OVER UTILITY EASEMENTS.
  3. MAINTENANCE ACCESS RIGHTS ARE GRANTED OVER ALL TRACTS SHOWN HEREON FOR THE PURPOSE OF MAINTENANCE OF UTILITIES.

Approved R.P.E.  
 0225-0012-88  
 AS/140  
 FLORIDA SURVEYING & MAPPING, INC.  
 REGISTERED LAND SURVEYORS  
**COUNTERPOINT ESTATES PLAT NO. 5**

TURNOUT REQUIRED  
 SPECIAL REQUIREMENTS

COUNTERPOINT ESTATES PLAT NO. 4  
 P.B. 38 PAGE 137