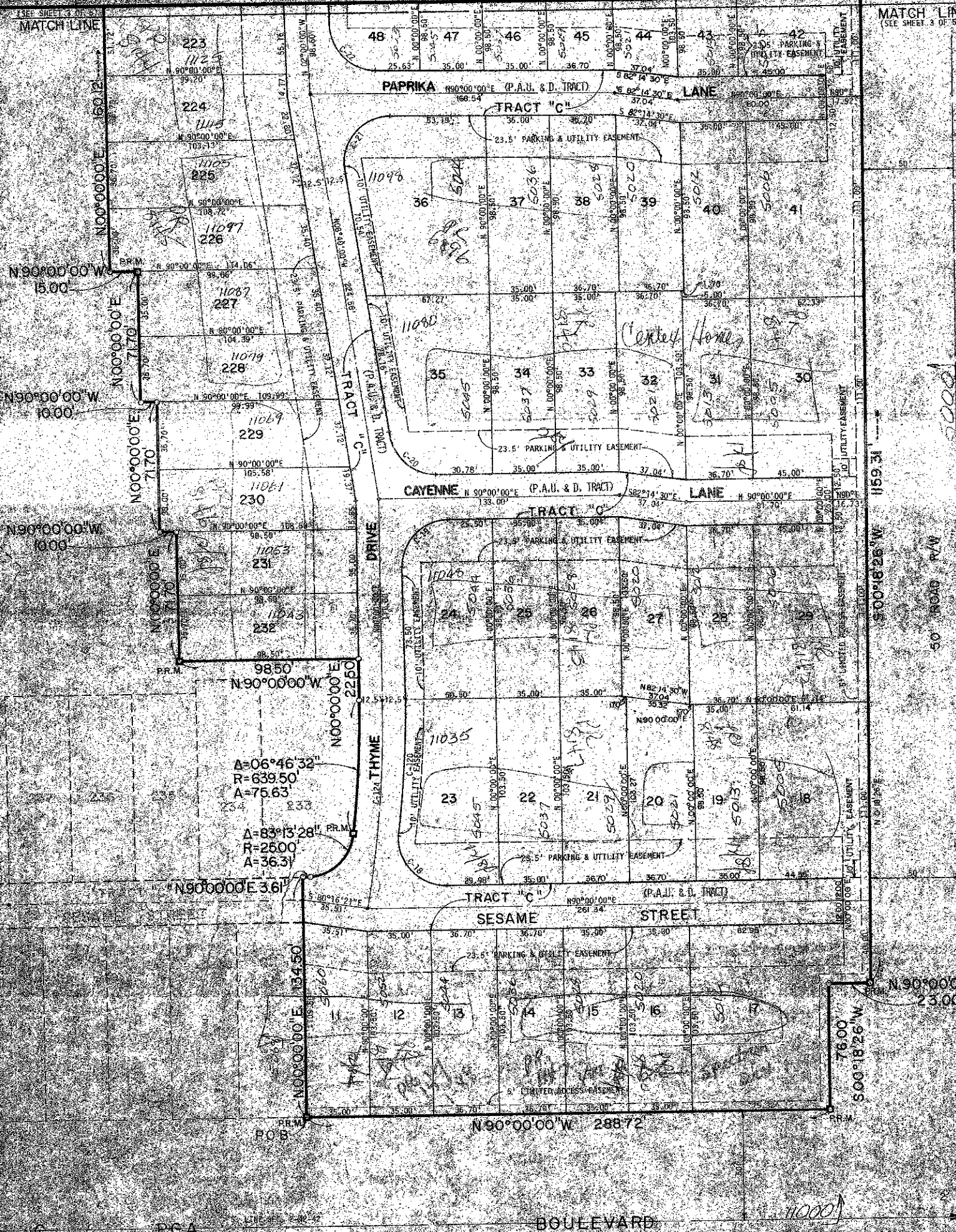
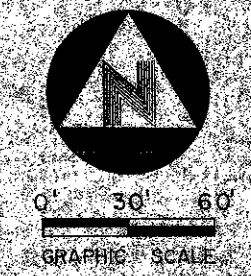


40-70



CINNAMON PLAT NO. 2

LYING IN THE SOUTHEAST ONE QUARTER SECTION 2, TOWNSHIP 42 SOUTH, RANGE 42 EAST PALM BEACH COUNTY, FLORIDA FEBRUARY 1978



70

PLAT HAS BEEN FILED FOR RECORD IN THE PUBLIC RECORDS OF PALM BEACH COUNTY, FLORIDA.

1000-045

BISCAYNE ENGINEERING CO.
 2889 10th Avenue North
 Coral Gables, Florida 33134

DATE OF THIS SURVEY	FEBRUARY 1978
PROJECT	CINNAMON PLAT NO. 2
SCALE	AS SHOWN
BY	[Signature]
CHECKED	[Signature]
DATE OF THIS COPY	

BOULEVARD