

40-42

42

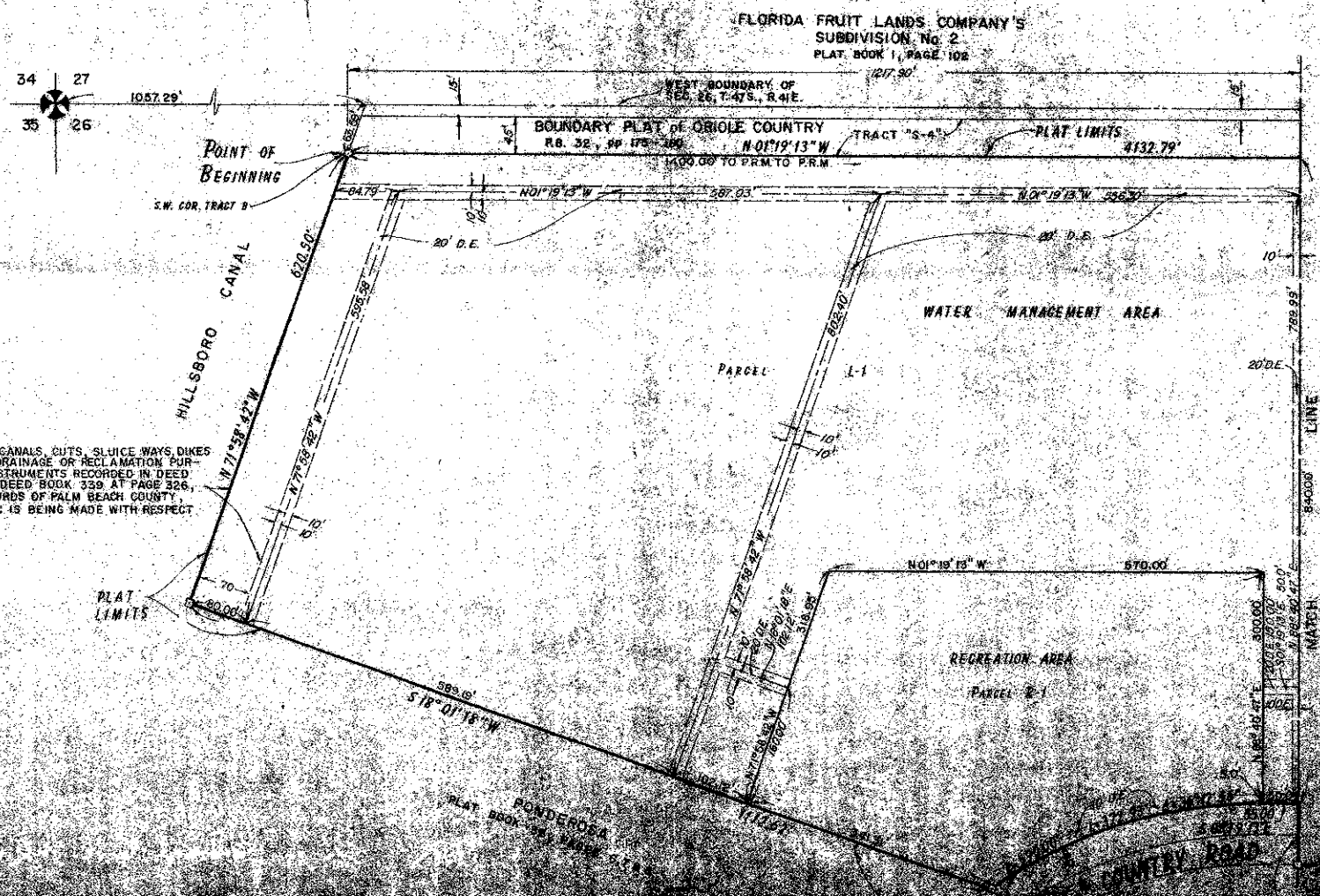
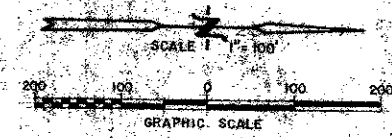
# WINDING LAKES SECTION ONE

A PART OF A P.U.D.

BEING A REPLAT OF TRACTS "B", "C" AND "D" AND A PORTION OF TRACT "S-1", BOUNDARY PLAT OF ORIOLE COUNTRY, AS RECORDED IN PLAT BOOK 32, PAGES 175 THRU 180 INCLUSIVE, PUBLIC RECORDS OF PALM BEACH COUNTY, FLORIDA. SECTIONS 25 & 26, TOWNSHIP 47 SOUTH, RANGE 41 EAST.

PREPARED BY  
**BROOME & FARINA, INC.**  
ENGINEERS - PLANNERS - SURVEYORS  
CORAL SPRINGS, FLORIDA  
By: JOHN A. FARINA, P.L.S. 1564

SHEET 2 OF 3 SHEETS



EXISTING EASEMENT FOR CANALS, CUTS, SLUICEWAYS, DIKES AND OTHER WORKS FOR DRAINAGE OR RECLAMATION PURPOSES AS RESERVED IN INSTRUMENTS RECORDED IN DEED BOOK 40, PAGE 42 AND DEED BOOK 339, AT PAGE 326, BOTH OF THE PUBLIC RECORDS OF PALM BEACH COUNTY, FLORIDA. NO DEDICATION IS BEING MADE WITH RESPECT TO THIS EASEMENT.

### AREA TABULATIONS

LOT AREAS	1,018,772 Sq. Ft.
60' R/W	136,966 Sq. Ft.
80' R/W	246,321 Sq. Ft.
PARCELS A-1 & 2	10,400 Sq. Ft.
PARCELS B-1, 2, 3 & 4	77,949 Sq. Ft.
PARCEL D-1	217,799 Sq. Ft.
PARCEL L-1	1,952,342 Sq. Ft.
PARCEL N-1	70,927 Sq. Ft.
PARCEL R-1	217,989 Sq. Ft.
<b>TOTAL</b>	<b>3,949,465 Sq. Ft. — 90.667 Acs.</b>

WINDING LAKES