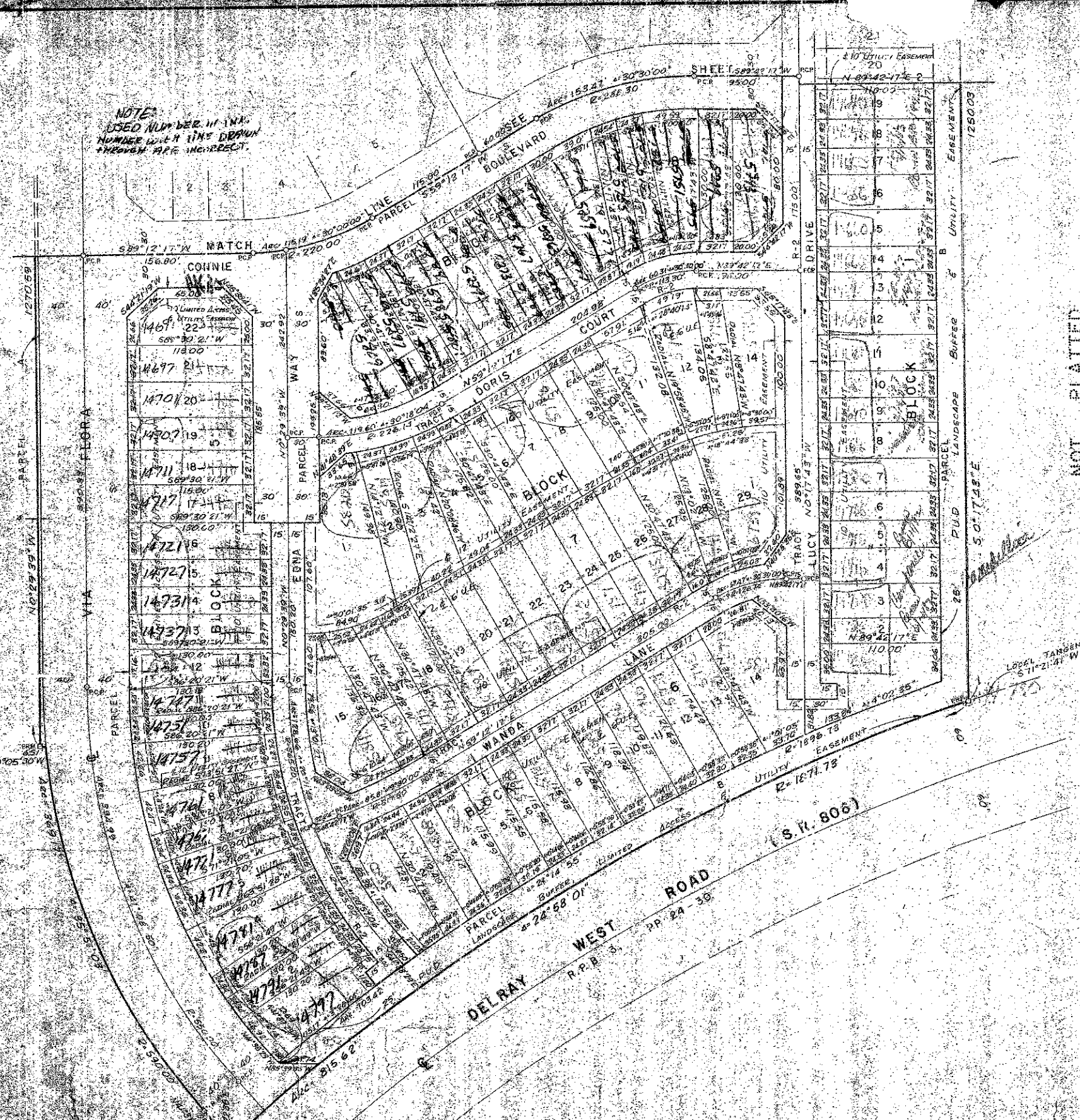


NOTE:
USED NUMBER IN IMA
NUMBER WITH A LINE DRAWN
THEREON ARE INCORRECT.



NOT PLATTED

A PLANNED UNIT DEVELOPMENT
IN VILADELAY WEST
PLAT NO 3 OF
DELRAY VILLAS
IN THREE SHEETS
SHEET 3 OF 3



0325-002

39/200

Field Book No.	ROBERT LLOYD & ASSOCIATES, INC.
Drawn by	ENGINEERS PLANNERS SURVEYORS
Checked by	WEST PALM BEACH FLORIDA

PLAT NO 3
DELRAY VILLAS

3