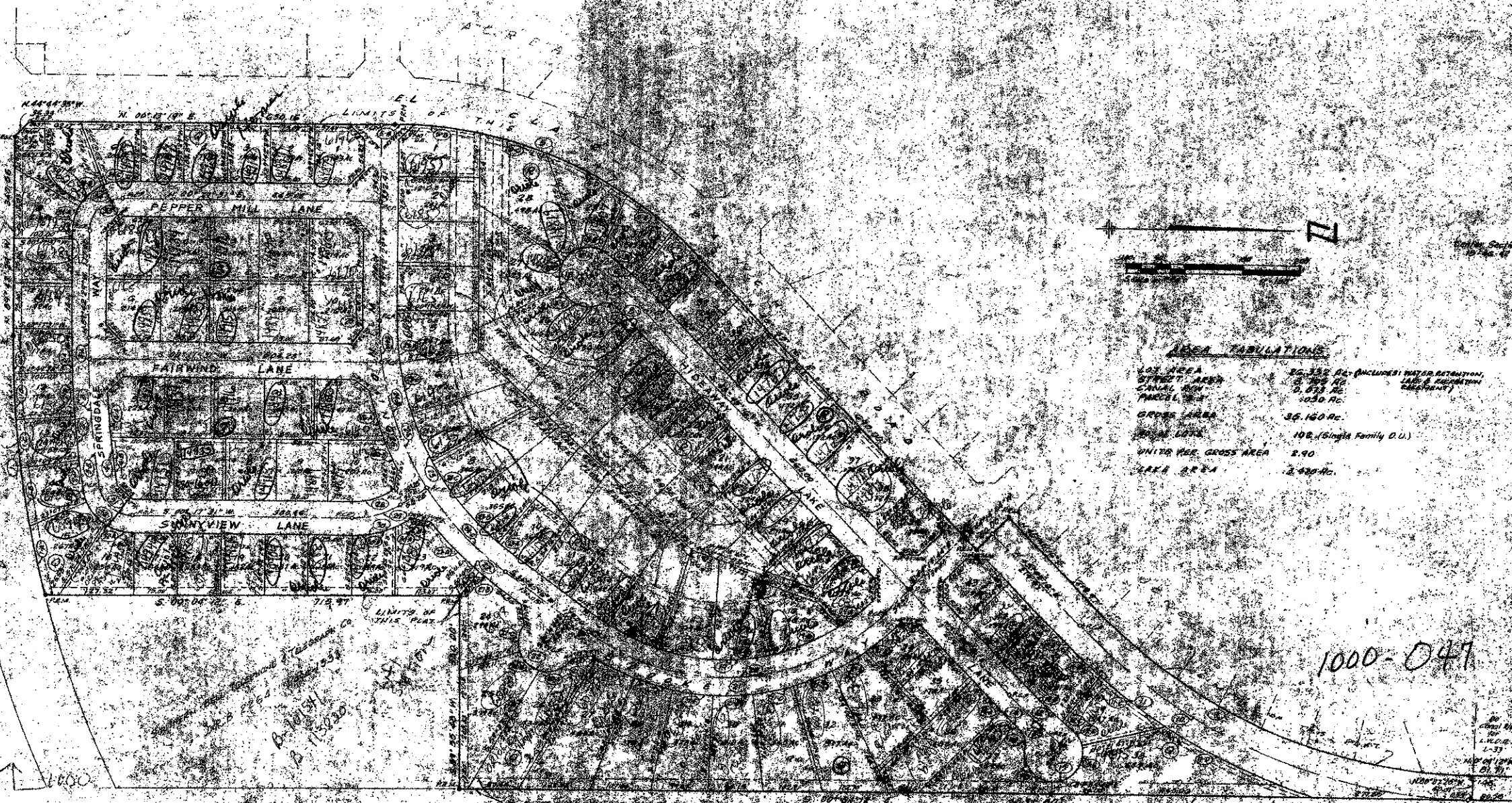


COCO WOOD LAKES - SECTION 3

A SUBDIVISION OF A PORTION OF
SECTION 15, TOWNSHIP 46 SOUTH, RANGE 42 EAST,
PALM BEACH COUNTY, FLORIDA

144



AREA TABULATIONS

LOT AREA	26,352 AC. (INCLUDES WATER RETENTION
STREET AREA	2,875 AC.
CANAL AND	2,875 AC.
PARCEL AREA	1030 AC.
GROSS AREA	36,160 AC.
NET AREA	102 (Single Family D.U.)
WHITE HSE. GROSS AREA	2,490
LAKE AREA	2,490 AC.

1000-047

RH
75.27
72.76
15.46

CURVE DATA

NO.	BEARING	CHORD	ARC
1	N 89° 02' 00" E	117.51	117.51
2	N 89° 02' 00" E	117.51	117.51
3	N 89° 02' 00" E	117.51	117.51
4	N 89° 02' 00" E	117.51	117.51
5	N 89° 02' 00" E	117.51	117.51
6	N 89° 02' 00" E	117.51	117.51
7	N 89° 02' 00" E	117.51	117.51
8	N 89° 02' 00" E	117.51	117.51
9	N 89° 02' 00" E	117.51	117.51
10	N 89° 02' 00" E	117.51	117.51
11	N 89° 02' 00" E	117.51	117.51
12	N 89° 02' 00" E	117.51	117.51
13	N 89° 02' 00" E	117.51	117.51
14	N 89° 02' 00" E	117.51	117.51
15	N 89° 02' 00" E	117.51	117.51
16	N 89° 02' 00" E	117.51	117.51
17	N 89° 02' 00" E	117.51	117.51
18	N 89° 02' 00" E	117.51	117.51
19	N 89° 02' 00" E	117.51	117.51
20	N 89° 02' 00" E	117.51	117.51

PROPERTIES

NO.	BEARING	CHORD	ARC
1	N 89° 02' 00" E	117.51	117.51
2	N 89° 02' 00" E	117.51	117.51
3	N 89° 02' 00" E	117.51	117.51
4	N 89° 02' 00" E	117.51	117.51
5	N 89° 02' 00" E	117.51	117.51
6	N 89° 02' 00" E	117.51	117.51
7	N 89° 02' 00" E	117.51	117.51
8	N 89° 02' 00" E	117.51	117.51
9	N 89° 02' 00" E	117.51	117.51
10	N 89° 02' 00" E	117.51	117.51
11	N 89° 02' 00" E	117.51	117.51
12	N 89° 02' 00" E	117.51	117.51
13	N 89° 02' 00" E	117.51	117.51
14	N 89° 02' 00" E	117.51	117.51
15	N 89° 02' 00" E	117.51	117.51
16	N 89° 02' 00" E	117.51	117.51
17	N 89° 02' 00" E	117.51	117.51
18	N 89° 02' 00" E	117.51	117.51
19	N 89° 02' 00" E	117.51	117.51
20	N 89° 02' 00" E	117.51	117.51

PROPERTIES

NO.	BEARING	CHORD	ARC
1	N 89° 02' 00" E	117.51	117.51
2	N 89° 02' 00" E	117.51	117.51
3	N 89° 02' 00" E	117.51	117.51
4	N 89° 02' 00" E	117.51	117.51
5	N 89° 02' 00" E	117.51	117.51
6	N 89° 02' 00" E	117.51	117.51
7	N 89° 02' 00" E	117.51	117.51
8	N 89° 02' 00" E	117.51	117.51
9	N 89° 02' 00" E	117.51	117.51
10	N 89° 02' 00" E	117.51	117.51
11	N 89° 02' 00" E	117.51	117.51
12	N 89° 02' 00" E	117.51	117.51
13	N 89° 02' 00" E	117.51	117.51
14	N 89° 02' 00" E	117.51	117.51
15	N 89° 02' 00" E	117.51	117.51
16	N 89° 02' 00" E	117.51	117.51
17	N 89° 02' 00" E	117.51	117.51
18	N 89° 02' 00" E	117.51	117.51
19	N 89° 02' 00" E	117.51	117.51
20	N 89° 02' 00" E	117.51	117.51

CURVE DATA

NO.	BEARING	CHORD	ARC
1	N 89° 02' 00" E	117.51	117.51
2	N 89° 02' 00" E	117.51	117.51
3	N 89° 02' 00" E	117.51	117.51
4	N 89° 02' 00" E	117.51	117.51
5	N 89° 02' 00" E	117.51	117.51
6	N 89° 02' 00" E	117.51	117.51
7	N 89° 02' 00" E	117.51	117.51
8	N 89° 02' 00" E	117.51	117.51
9	N 89° 02' 00" E	117.51	117.51
10	N 89° 02' 00" E	117.51	117.51
11	N 89° 02' 00" E	117.51	117.51
12	N 89° 02' 00" E	117.51	117.51
13	N 89° 02' 00" E	117.51	117.51
14	N 89° 02' 00" E	117.51	117.51
15	N 89° 02' 00" E	117.51	117.51
16	N 89° 02' 00" E	117.51	117.51
17	N 89° 02' 00" E	117.51	117.51
18	N 89° 02' 00" E	117.51	117.51
19	N 89° 02' 00" E	117.51	117.51
20	N 89° 02' 00" E	117.51	117.51

CURVE DATA

NO.	BEARING	CHORD	ARC
1	N 89° 02' 00" E	117.51	117.51
2	N 89° 02' 00" E	117.51	117.51
3	N 89° 02' 00" E	117.51	117.51
4	N 89° 02' 00" E	117.51	117.51
5	N 89° 02' 00" E	117.51	117.51
6	N 89° 02' 00" E	117.51	117.51
7	N 89° 02' 00" E	117.51	117.51
8	N 89° 02' 00" E	117.51	117.51
9	N 89° 02' 00" E	117.51	117.51
10	N 89° 02' 00" E	117.51	117.51
11	N 89° 02' 00" E	117.51	117.51
12	N 89° 02' 00" E	117.51	117.51
13	N 89° 02' 00" E	117.51	117.51
14	N 89° 02' 00" E	117.51	117.51
15	N 89° 02' 00" E	117.51	117.51
16	N 89° 02' 00" E	117.51	117.51
17	N 89° 02' 00" E	117.51	117.51
18	N 89° 02' 00" E	117.51	117.51
19	N 89° 02' 00" E	117.51	117.51
20	N 89° 02' 00" E	117.51	117.51

39/144

Coco Wood Lakes #3