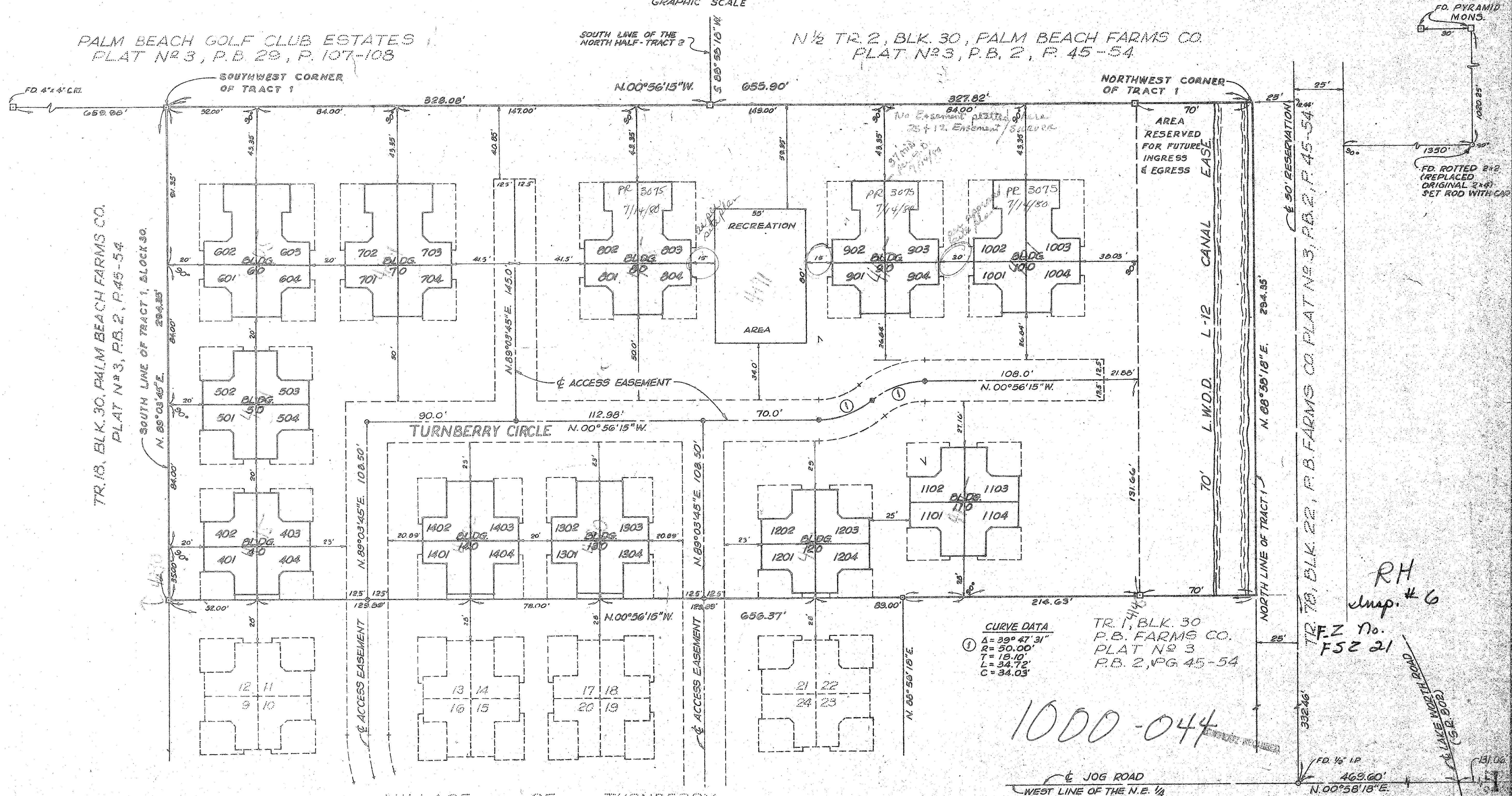
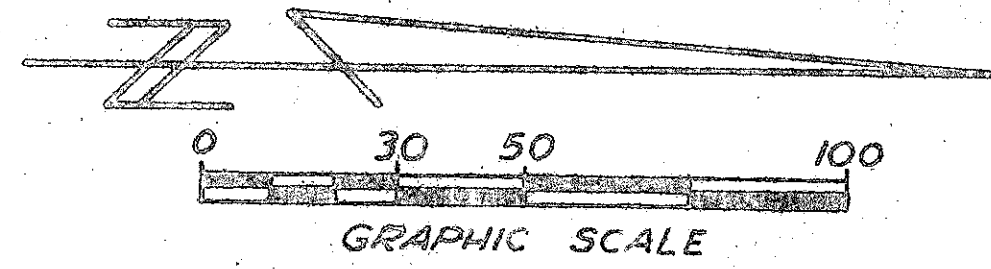


VILLAGE OF TURNBERRY

PHASE II

119

IN SECTION 27, TOWNSHIP 44 SOUTH, RANGE 42 EAST; BEING A REPLAT OF A PORTION OF TRACT 1, BLOCK 30, PALM BEACH FARMS COMPANY PLAT NO. 3, AS RECORDED IN PLAT BOOK 2, PAGES 45 THROUGH 54, PUBLIC RECORDS OF PALM BEACH COUNTY, FLORIDA



PALM BEACH GOLF CLUB ESTATES
PLAT NO. 3, P.B. 29, P. 107-108

N 1/2 TR. 2, BLK. 30, PALM BEACH FARMS CO.
PLAT NO. 3, P.B. 2, P. 45-54

TR. 18, BLK. 30, PALM BEACH FARMS CO.
PLAT NO. 3, P.B. 2, P. 45-54

TR. 20, BLK. 22, P.B. FARMS CO. PLAT NO. 3, P.B. 2, P. 45-54

CURVE DATA
 Δ = 39° 47' 31"
 R = 50.00'
 T = 19.10'
 L = 34.72'
 C = 34.03'

TR. 1, BLK. 30
P.B. FARMS CO.
PLAT NO. 3
P.B. 2, PG. 45-54

1000-044

RH
Imp. # 6

F.Z. No.
FSZ 21

VILLAGE OF TURNBERRY
PB 37, P. 166 & 167

BEARINGS REFER TO STATE PLANE GRID AZIMUTHS AS ESTABLISHED BY PALM BEACH COUNTY SURVEY DEPT.

NOTE:
SEE SHEET 3 OF 4 FOR ALL EASEMENT LOCATIONS.
SEE SHEET 4 OF 4 FOR BUILDING SIZES AND TYPES.

ADAIR & BRADY, INC.
CONSULTING ENGINEERS & LAND SURVEYORS
ORLANDO, FLORIDA

SCALE: 1" = 30'

DATE: MAY 78

PROJECT: VILLAGE OF TURNBERRY

RECORD PLAT

PII46 2 4

VILLAGE OF TURNBERRY