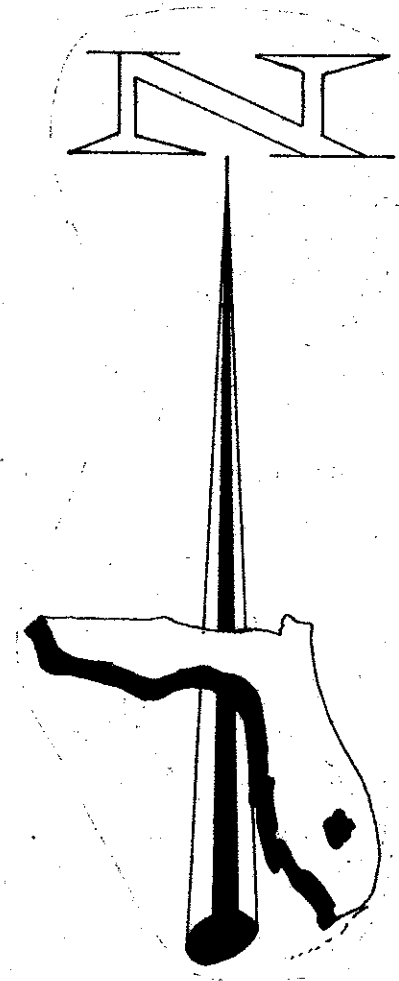
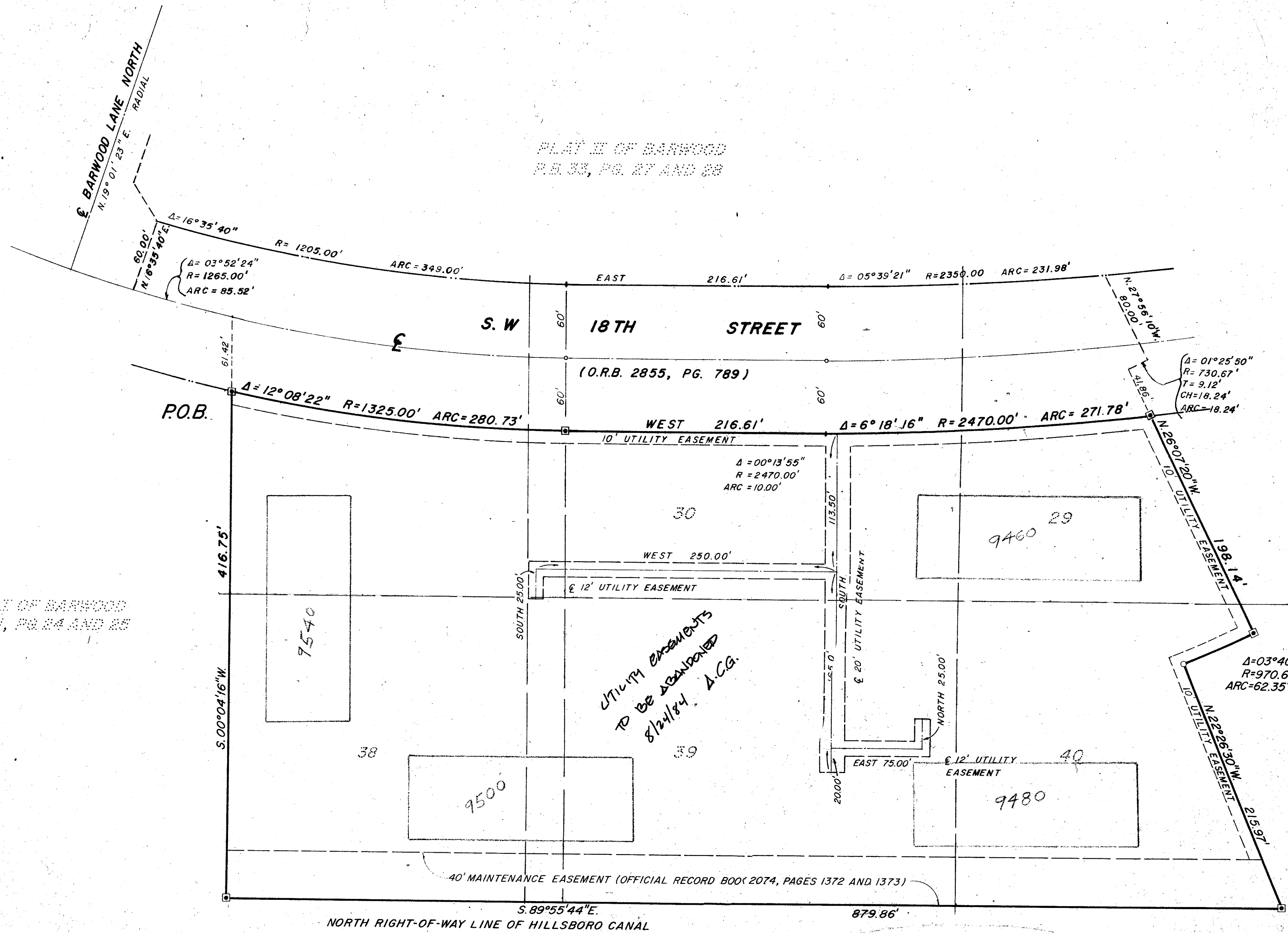


# PLAT III OF BARWOOD

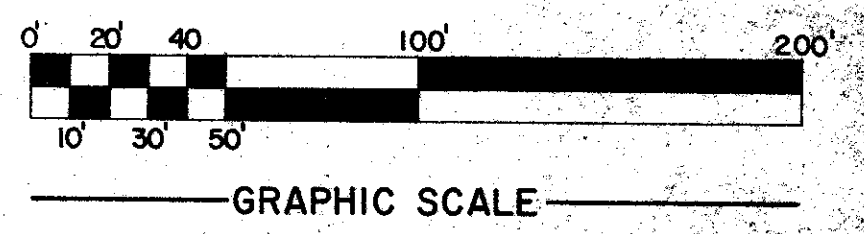
In Section 31, Township 47 South, Range 42 East  
Palm Beach County, Florida

BEING A REPLAT OF A PORTION OF BLOCK 82, PALM BEACH FARMS CO., PLAT NO. 3  
RECORDED IN PLAT BOOK 2, PAGE 53, PUBLIC RECORDS,  
PALM BEACH COUNTY, FLORIDA

91



PALM BEACH FARMS CO., PLAT NO. 3  
P.B. 2, PG. 53



*Handwritten signature*

0306-316

39/91

THIS INSTRUMENT WAS PREPARED BY FORGE PERDOMO  
IN THE OFFICES OF FLORIDA SURVEYING AND MAPPING, INC.  
941 NORTH MILITARY TRAIL, WEST PALM BEACH, FLORIDA

FLORIDA SURVEYING & MAPPING, INC.	
REGISTERED LAND SURVEYORS	
WEST PALM BEACH, FLORIDA 33401	
SCALE:	
DATE:	
BY:	
CHECKED BY:	
DATE:	

DRAWING NUMBER 39-91