

39-74

CAPE POINTE OF JONATHAN'S LANDING - P.U.D.

BEING A REPLAT OF ALL OF PARCEL B & PART OF F.W. I, JONATHAN'S LANDING PLAT ONE - P.U.D. AS RECORDED IN PLAT BOOK 34, PGS. 29, 30 & 31, PUBLIC RECORDS OF PALM BEACH COUNTY, FLORIDA.

IN PART OF SECTION 6, TWP. 41 S., RGE. 43 E.

PALM BEACH COUNTY, FLORIDA
IN 2 SHEETS SHEET NO. 2

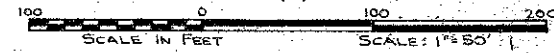
GEE & JENSON
ENGINEERS-ARCHITECTS-PLANNERS, INC.
WEST PALM BEACH, FLORIDA
SEPTEMBER 1979

CURVE DATA

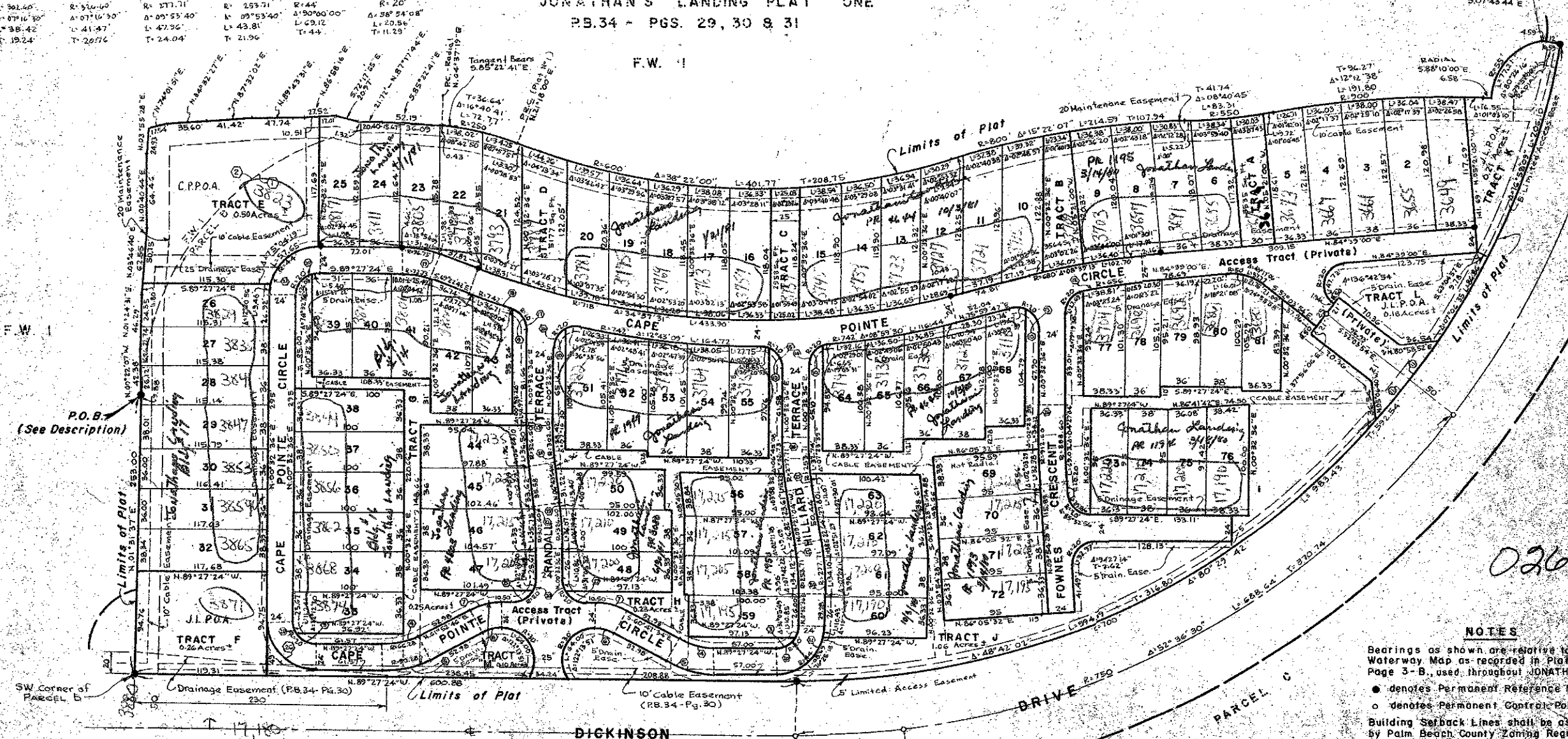
CURVE NUMBER & LOCATION

| ① | ② | ③ | ④ | ⑤ | ⑥ | ⑦ | ⑧ | ⑨ | ⑩ | ⑪ | ⑫ | ⑬ | ⑭ | ⑮ | ⑯ | ⑰ | ⑱ | ⑲ | ⑳ | ㉑ | ㉒ | ㉓ | ㉔ | ㉕ | ㉖ | ㉗ | ㉘ | ㉙ | ㉚ | ㉛ | ㉜ | ㉝ | ㉞ | ㉟ | ㊱ | ㊲ | ㊳ | ㊴ | ㊵ | ㊶ | ㊷ | ㊸ | ㊹ | ㊺ | ㊻ | ㊼ | ㊽ | ㊾ | ㊿ |
|--|--|--|---|---|---|---|--|--|---|--|---|---|---|--|--|---|--|--|--|---|---|---|--|--|---|--|---|---|---|--|--|---|--|--|--|---|---|---|--|--|---|--|---|---|---|--|---|---|---|
| PLAT NO. 1 P.O.B. to P.R.C. R= 250' Δ= 109°46'28" L= 478.70 T= 385.54 | THIS PLAT P.O.B. to P.C. R= 250' Δ= 93°05'42" L= 406.20 T= 263.88 | R= 20' Δ= 60°00'00" L= 20.94' T= 11.55' | R= 64.28' Δ= 28°39'50" L= 23.91' T= 13.62' | R= 90.28' Δ= 28°39'50" L= 45.16' T= 23.06' | R= 450' Δ= 04°16'46" L= 72.77' T= 17.38' | R= 20' Δ= 104°32'49" L= 36.49' T= 25.85' | R= 20' Δ= 84°36'41" L= 19.48' T= 18.15' | R= 20' Δ= 90°44'05" L= 31.67' T= 20.26' | R= 20' Δ= 101°59'06" L= 25.50' T= 24.69' | R= 20' Δ= 73°02'36" L= 15.81' T= 14.81' | R= 742' Δ= 03°07'18" L= 40.43' T= 10.22' | R= 96.73' Δ= 10°04'42" L= 33.90' T= 17.12' | R= 20' Δ= 190°00'00" L= 31.42' T= 20.00' | R= 44' Δ= 190°00'00" L= 69.12' T= 44' | R= 36.92' Δ= 28°39'50" L= 18.47' T= 9.43' | R= 60.92' Δ= 28°39'50" L= 30.47' T= 15.56' | R= 20' Δ= 57°47'30" L= 20.17' T= 11.04' | R= 20' Δ= 68°50'00" L= 23.91' T= 13.62' | R= 20' Δ= 65°23'10" L= 22.82' T= 12.84' | R= 700' Δ= 03°54'20" L= 47.74' T= 23.88' | R= 450' Δ= 04°16'46" L= 72.77' T= 17.38' | R= 20' Δ= 104°32'49" L= 36.49' T= 25.85' | R= 20' Δ= 84°36'41" L= 19.48' T= 18.15' | R= 20' Δ= 90°44'05" L= 31.67' T= 20.26' | R= 20' Δ= 101°59'06" L= 25.50' T= 24.69' | R= 20' Δ= 73°02'36" L= 15.81' T= 14.81' | R= 742' Δ= 03°07'18" L= 40.43' T= 10.22' | R= 96.73' Δ= 10°04'42" L= 33.90' T= 17.12' | R= 20' Δ= 190°00'00" L= 31.42' T= 20.00' | R= 44' Δ= 190°00'00" L= 69.12' T= 44' | R= 36.92' Δ= 28°39'50" L= 18.47' T= 9.43' | R= 60.92' Δ= 28°39'50" L= 30.47' T= 15.56' | R= 20' Δ= 57°47'30" L= 20.17' T= 11.04' | R= 20' Δ= 68°50'00" L= 23.91' T= 13.62' | R= 20' Δ= 65°23'10" L= 22.82' T= 12.84' | R= 700' Δ= 03°54'20" L= 47.74' T= 23.88' | R= 450' Δ= 04°16'46" L= 72.77' T= 17.38' | R= 20' Δ= 104°32'49" L= 36.49' T= 25.85' | R= 20' Δ= 84°36'41" L= 19.48' T= 18.15' | R= 20' Δ= 90°44'05" L= 31.67' T= 20.26' | R= 20' Δ= 101°59'06" L= 25.50' T= 24.69' | R= 20' Δ= 73°02'36" L= 15.81' T= 14.81' | R= 742' Δ= 03°07'18" L= 40.43' T= 10.22' | R= 96.73' Δ= 10°04'42" L= 33.90' T= 17.12' | R= 20' Δ= 190°00'00" L= 31.42' T= 20.00' | R= 44' Δ= 190°00'00" L= 69.12' T= 44' | | | |

JONATHAN'S LANDING PLAT ONE
PB.34 - PGS. 29, 30 & 31



STATE OF FLORIDA
COUNTY OF PALM BEACH
This Plat was filed for record on
this _____ day of _____ 1980
and duly recorded in Plat Book No.
on page _____
JOHN B. DUNKLE, Clerk Circuit Court
By _____



0261-312

NOTES

- Bedings as shown are relative to Intracoastal Waterway Map as recorded in Plat Book 17, Page 3-B, used throughout JONATHAN'S LANDING PLAT.
- denotes Permanent Reference Monument
- denotes Permanent Control Point
- Building Setback Lines shall be as required by Palm Beach County Zoning Regulations.
- There shall be no buildings or other structures placed on Utility Easements.
- There shall be no buildings or any kind of construction or the planting of trees or shrubs on Drainage Easements.
- Where drainage easements cross cable easements, drainage easements shall be the right of way.

CAPE POINTE OF JONATHAN'S
LANDING 39/74 P.U.D.