

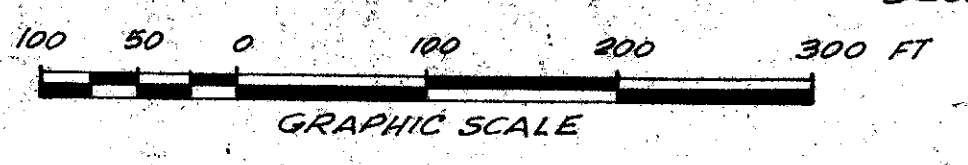
39-44

44

P.U.D. MISSION VIEJO

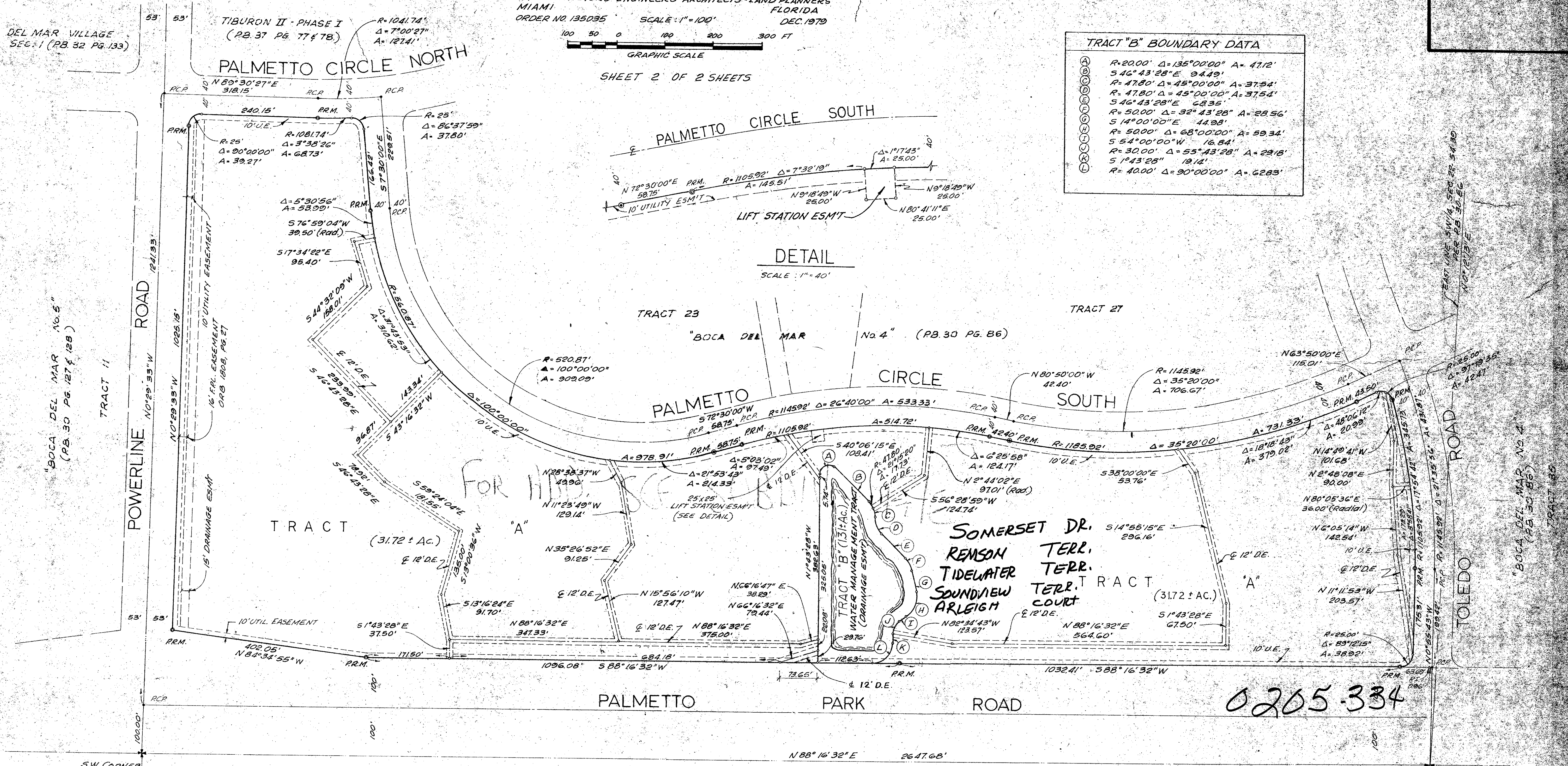
BEING A REPLAT OF TRACT 22, "BOCA DEL MAR No. 4", PLAT BOOK 30, PAGE 86 OF THE PUBLIC RECORDS OF PALM BEACH COUNTY, FLORIDA. LYING AND BEING IN THE SW 1/4 OF SECTION 22, TOWNSHIP 47 SOUTH, RANGE 42 EAST, PALM BEACH COUNTY, FLORIDA.

PREPARED BY:
SCHWEBKE-SHISKIN & ASSOC., INC.
LAND SURVEYORS-ENGINEERS-ARCHITECTS-LAND PLANNERS
MIAMI FLORIDA
ORDER NO. 135035 SCALE: 1"=100'
DEC. 1979



SHEET 2 OF 2 SHEETS

TRACT "B" BOUNDARY DATA		
R=2000'	Δ=135°00'00"	A=4712'
S 46°43'28"E	9449'	
R=4780'	Δ=45°00'00"	A=3754'
R=4780'	Δ=45°00'00"	A=3754'
S 46°43'28"E	6835'	
R=5000'	Δ=32°43'28"	A=2856'
S 14°00'00"E	4493'	
R=5000'	Δ=68°00'00"	A=5934'
S 54°00'00"W	1684'	
R=3000'	Δ=55°43'28"	A=2918'
S 1°43'28"	1914'	
R=4000'	Δ=90°00'00"	A=6283'



DETAIL
SCALE: 1"=40'

0205-334

L.W.D.D. LAT. NO. 48

MISSION VIEJO
WOODHAVEN EAST INC
P.B. 38-28499

39/44

DRAWING NUMBER

DRAWING NUMBER

DRAWING NUMBER

PLAN FIELD CORPORATION • FRESNO, CALIFORNIA