

39-40

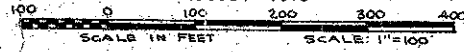
MEADOW WOOD OF THE LANDINGS AT WELLINGTON - P.U.D.

IN PART OF SECTIONS 6 & 7, TWP. 44 S., RGE. 41 E.

PALM BEACH COUNTY, FLORIDA

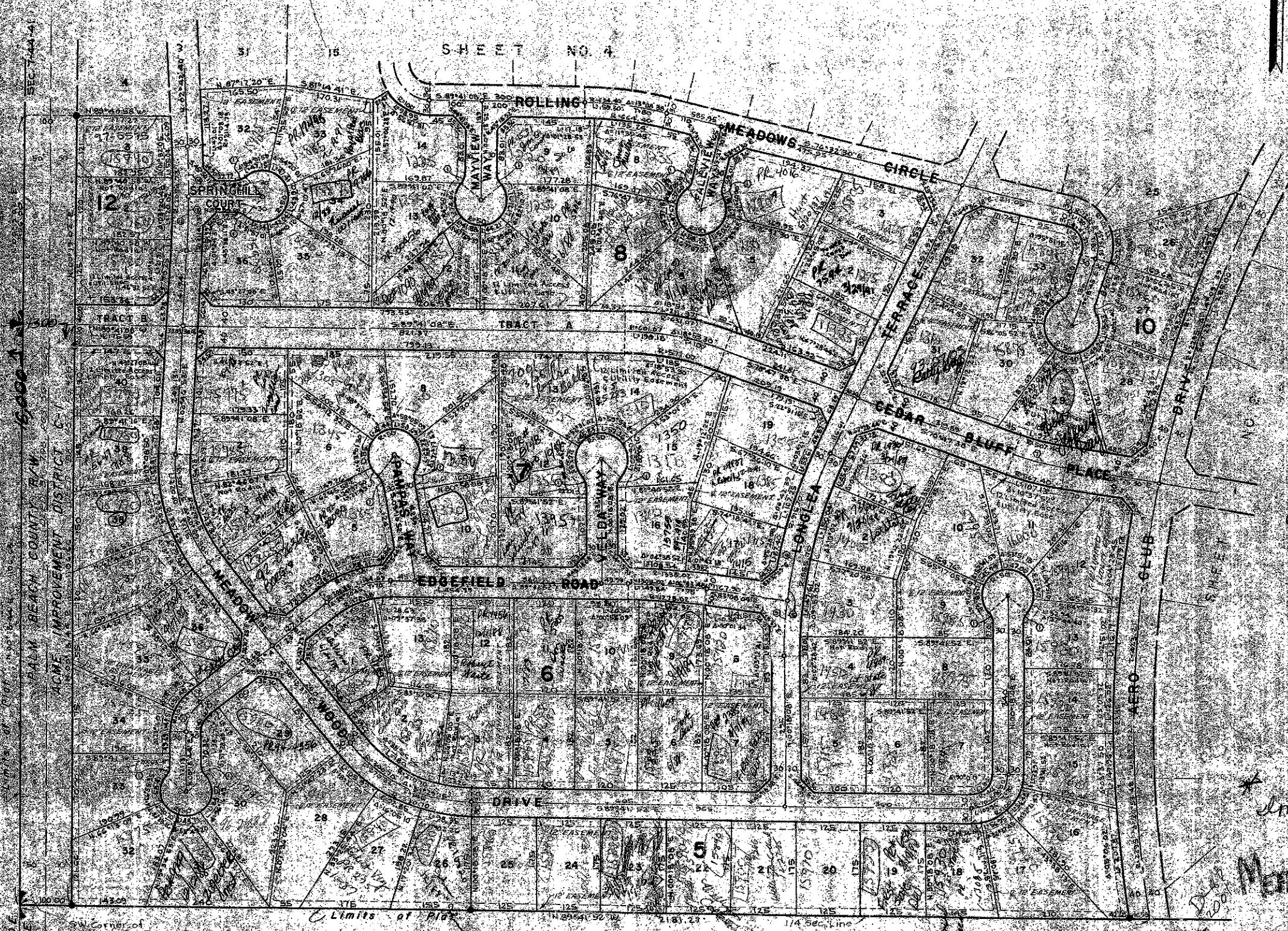
IN 4 SHEETS SHEET NO. 3

GEE & JENSON
ENGINEERS - ARCHITECTS - PLANNERS, INC.
WEST PALM BEACH, FLORIDA
AUGUST 1979



40

STATE OF FLORIDA
COUNTY OF PALM BEACH
This Plat was filed for record at
this day of _____, 1979
and duly recorded in Plat Book No. _____
on page _____
JOHN B. DUNN, Clerk of Circuit Court
By _____



CURVE DATA

Stationing	Radius	Delta	Chord	Offset
1+00.00	100.00	90.00	70.71	29.29
1+50.00	100.00	90.00	70.71	29.29
2+00.00	100.00	90.00	70.71	29.29
2+50.00	100.00	90.00	70.71	29.29
3+00.00	100.00	90.00	70.71	29.29
3+50.00	100.00	90.00	70.71	29.29
4+00.00	100.00	90.00	70.71	29.29
4+50.00	100.00	90.00	70.71	29.29
5+00.00	100.00	90.00	70.71	29.29
5+50.00	100.00	90.00	70.71	29.29
6+00.00	100.00	90.00	70.71	29.29
6+50.00	100.00	90.00	70.71	29.29
7+00.00	100.00	90.00	70.71	29.29
7+50.00	100.00	90.00	70.71	29.29
8+00.00	100.00	90.00	70.71	29.29
8+50.00	100.00	90.00	70.71	29.29
9+00.00	100.00	90.00	70.71	29.29
9+50.00	100.00	90.00	70.71	29.29
10+00.00	100.00	90.00	70.71	29.29
10+50.00	100.00	90.00	70.71	29.29
11+00.00	100.00	90.00	70.71	29.29
11+50.00	100.00	90.00	70.71	29.29
12+00.00	100.00	90.00	70.71	29.29
12+50.00	100.00	90.00	70.71	29.29
13+00.00	100.00	90.00	70.71	29.29
13+50.00	100.00	90.00	70.71	29.29
14+00.00	100.00	90.00	70.71	29.29
14+50.00	100.00	90.00	70.71	29.29
15+00.00	100.00	90.00	70.71	29.29
15+50.00	100.00	90.00	70.71	29.29
16+00.00	100.00	90.00	70.71	29.29
16+50.00	100.00	90.00	70.71	29.29
17+00.00	100.00	90.00	70.71	29.29
17+50.00	100.00	90.00	70.71	29.29
18+00.00	100.00	90.00	70.71	29.29
18+50.00	100.00	90.00	70.71	29.29
19+00.00	100.00	90.00	70.71	29.29
19+50.00	100.00	90.00	70.71	29.29
20+00.00	100.00	90.00	70.71	29.29
20+50.00	100.00	90.00	70.71	29.29
21+00.00	100.00	90.00	70.71	29.29
21+50.00	100.00	90.00	70.71	29.29
22+00.00	100.00	90.00	70.71	29.29
22+50.00	100.00	90.00	70.71	29.29
23+00.00	100.00	90.00	70.71	29.29
23+50.00	100.00	90.00	70.71	29.29
24+00.00	100.00	90.00	70.71	29.29
24+50.00	100.00	90.00	70.71	29.29
25+00.00	100.00	90.00	70.71	29.29
25+50.00	100.00	90.00	70.71	29.29
26+00.00	100.00	90.00	70.71	29.29
26+50.00	100.00	90.00	70.71	29.29
27+00.00	100.00	90.00	70.71	29.29
27+50.00	100.00	90.00	70.71	29.29
28+00.00	100.00	90.00	70.71	29.29
28+50.00	100.00	90.00	70.71	29.29
29+00.00	100.00	90.00	70.71	29.29
29+50.00	100.00	90.00	70.71	29.29
30+00.00	100.00	90.00	70.71	29.29
30+50.00	100.00	90.00	70.71	29.29
31+00.00	100.00	90.00	70.71	29.29
31+50.00	100.00	90.00	70.71	29.29
32+00.00	100.00	90.00	70.71	29.29
32+50.00	100.00	90.00	70.71	29.29
33+00.00	100.00	90.00	70.71	29.29
33+50.00	100.00	90.00	70.71	29.29
34+00.00	100.00	90.00	70.71	29.29
34+50.00	100.00	90.00	70.71	29.29
35+00.00	100.00	90.00	70.71	29.29
35+50.00	100.00	90.00	70.71	29.29

0269-304 RE/PUD
map 5
FL zone B

NOTES

- All bearings shown herein are true to the assumed meridian used throughout Wellington Building Setback Lines shall be as required by Palm Beach County Zoning Regulations.
- There shall be no buildings or other structures placed on Easements.
- There shall be no buildings on any kind of construction or areas or streets placed on Easements.
- denotes Permanent Reference Monument
- denotes Permanent Control Point
- Easements are for public utilities unless otherwise noted.
- ⊙ denotes Curve Data Number

* Impact Fee Due * PSC-77
(See Site Plan)

MEADOW WOOD AT THE LANDINGS
Well.

39/40