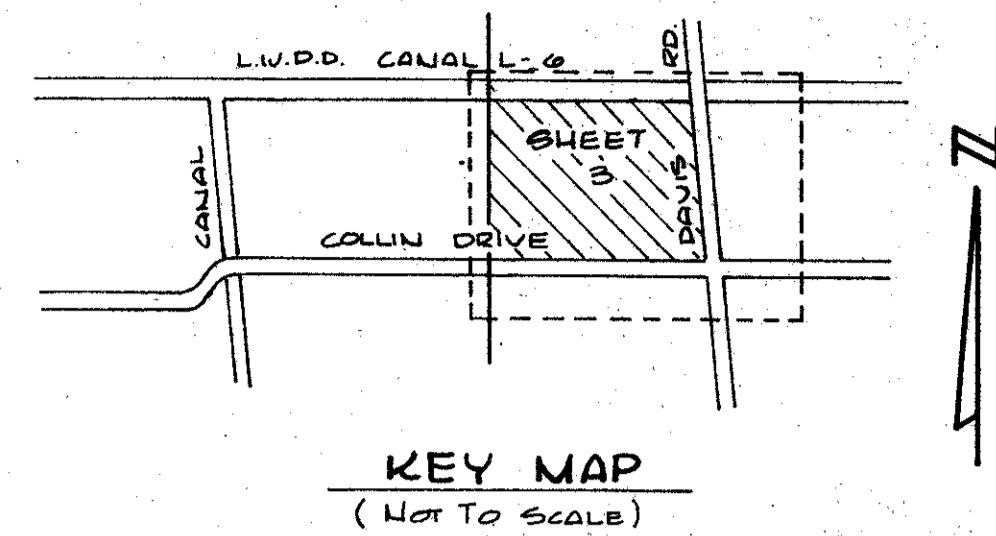


DRAWING NUMBER  
**39-28**

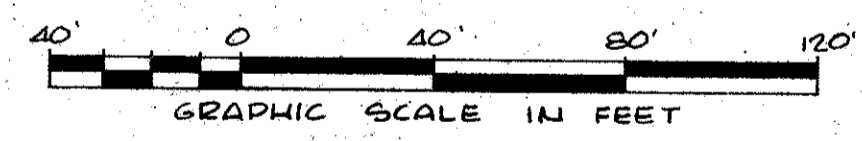
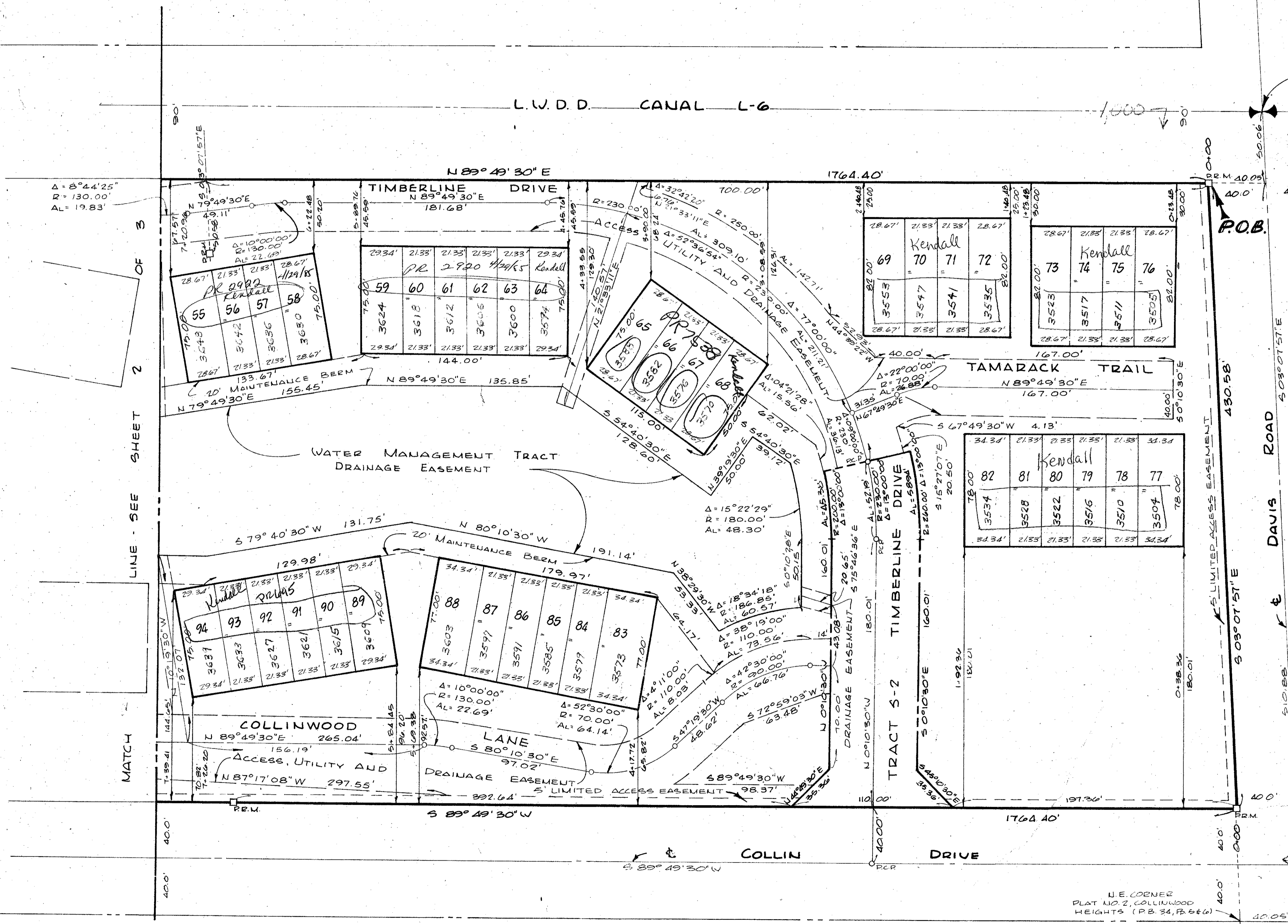
PLAN-HOLD CORPORATION - IRVINE, CALIFORNIA  
REGISTERED NUMBER 02724

# PLAT NO. 4 COLLINWOOD HEIGHTS

PALM BEACH COUNTY, FLORIDA  
SHEET 3 OF 3



N.E. CORNER OF N.W. 1/4  
SEC. 7, TWP. 14 S., R. 13 E.  
ALSO N.E. CORNER OF  
LOT 1, BLOCK 2, PLAT NO. 1  
PALM BEACH PLANTATIONS  
(P.B. 10, P. 20)



0320-301

~~1000-~~

39/28

PLAT NO. 2  
COLLINWOOD HEIGHTS  
PLAT BOOK 34, PAGES 5 & 6

HC-330

Field Book  
No. K-78 Pg. 76  
Design  
J.C. YESTE  
Drawn  
L. HAYES  
Checked  
L.A. MATTHEWS  
Field  
D. RUCK

ROBERT E. OWEN & ASSOCIATES, INC.  
ENGINEERS - PLANNERS - SURVEYORS  
WEST PALM BEACH  
FLORIDA

PLAT NO. 4  
COLLINWOOD HEIGHTS

Job No. 78-1170  
Scale 1" = 40'  
Date NOV., 1978  
Sheet of 3  
File No. BF-2285

DRAWING NUMBER

DRAWING NUMBER

DRAWING NUMBER

PLAN-HOLD CORPORATION - IRVINE, CALIFORNIA  
REGISTERED NUMBER 02724

PLAN-HOLD CORPORATION - IRVINE, CALIFORNIA  
REGISTERED NUMBER 02724

LINE - SEE SHEET 2 OF 3

MATCH

P.O.B.

LIMITED ACCESS EASEMENT

PLAT NO. 2  
POLO CLUB ESTATES  
PLAT BOOK 20, PAGE 1

N.E. CORNER  
PLAT NO. 2, COLLINWOOD  
HEIGHTS (P.B. 34, P. 5 & 6)