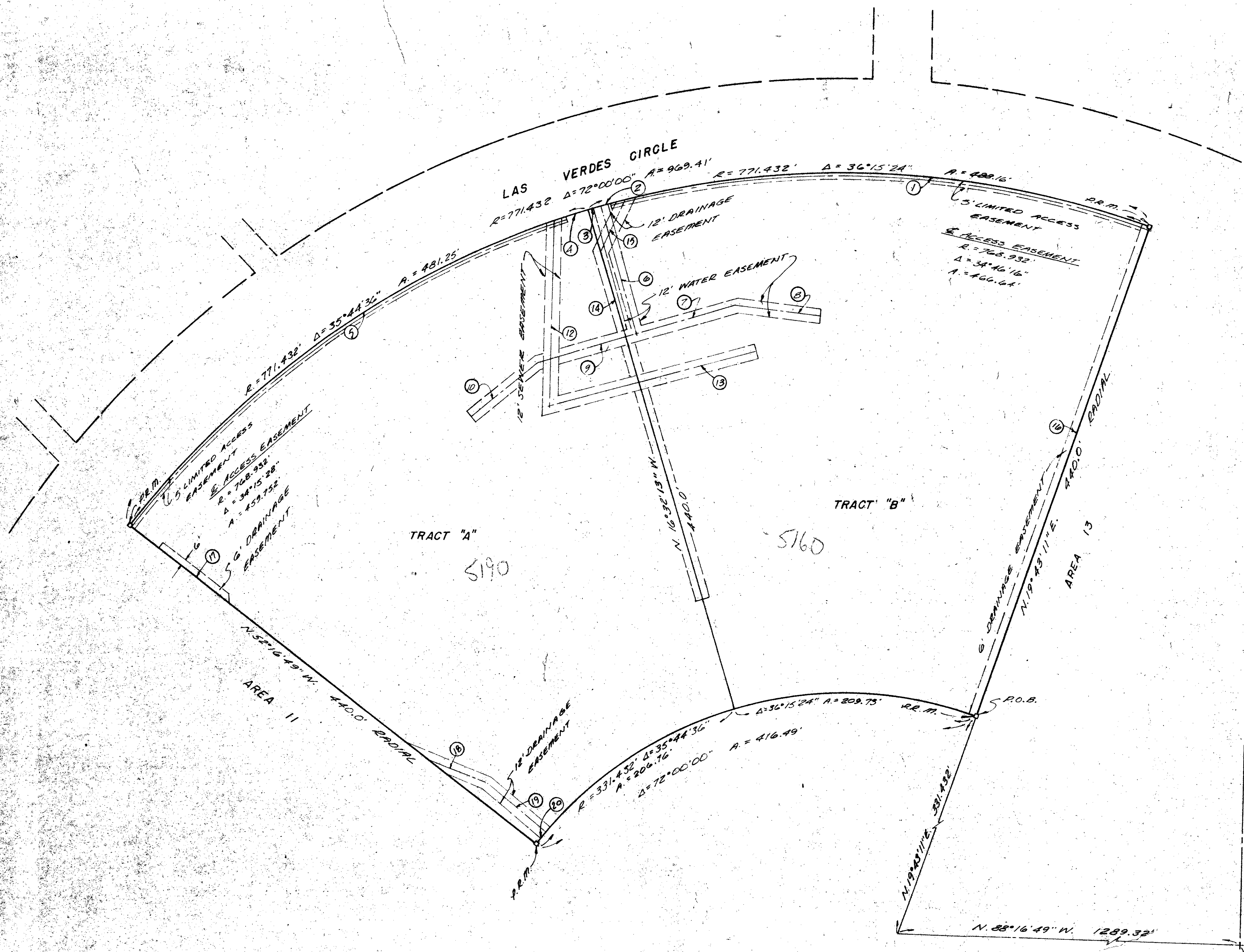
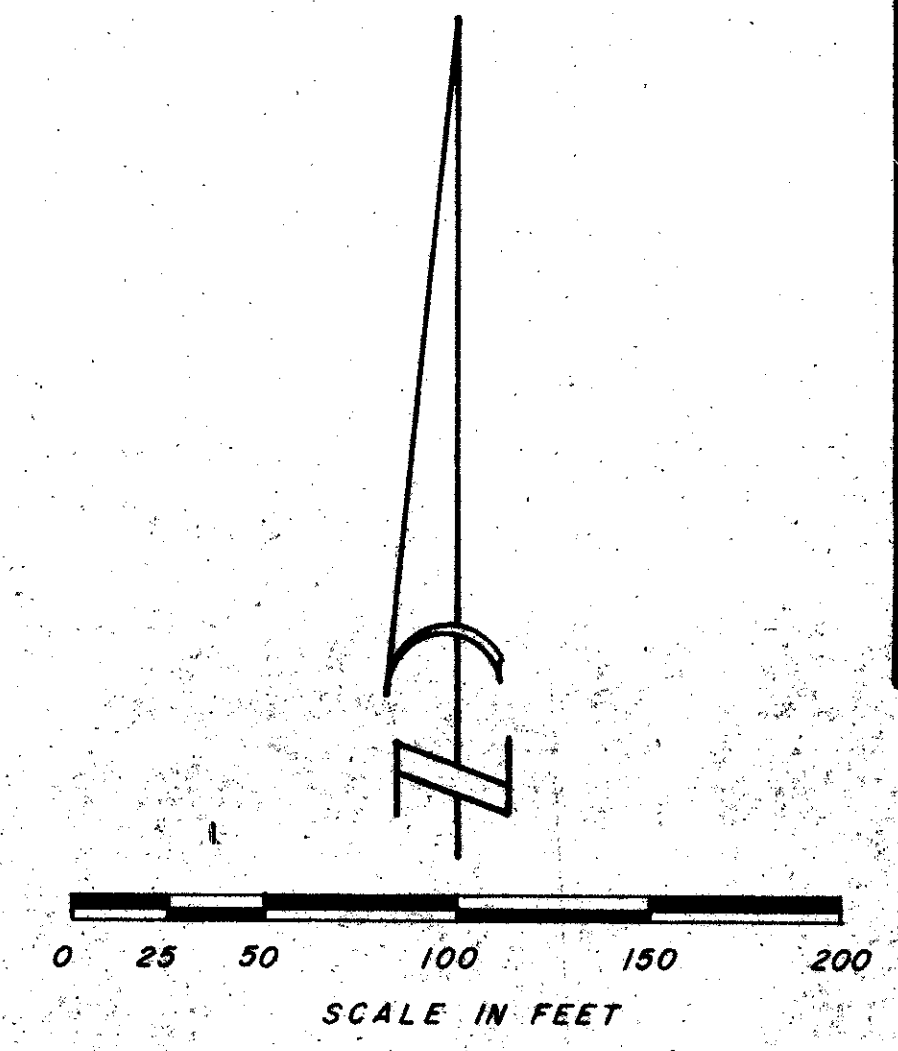


39-17

17

PART OF A PLANNED UNIT DEVELOPMENT
KINGS POINT PLAT NO. SIX
 A PART OF THE S. E. 1/4 OF SECTION 23
 TOWNSHIP 46 SOUTH, RANGE 42 EAST
 PALM BEACH COUNTY, FLORIDA



CURVE DATA FOR EASEMENTS

CURVE NO.	Δ	RADIUS	ARC
1	33° 42' 45"	771.432'	453.91'
2	1° 36' 13"	771.432'	21.59'
3	0° 55' 42"	771.432'	12.50'
4	2° 14' 10"	771.432'	30.11'
5	33° 31' 10"	771.432'	451.30'
20	2° 35' 38"	331.422'	15.0'

WATER EASEMENTS

EASE. NO.	BEARING	DISTANCE
6	N.15°36'31"W.	112.0'
7	S.74°23'29"E.	88.51'
8	S.83°06'31"E.	73.25'
9	S.74°23'29"W.	88.06'
10	S.51°53'29"W.	72.53'

SEWER EASEMENTS

EASE. NO.	BEARING	DISTANCE
12	N.1°24'23"E.	155.23'
13	S.75°26'05"W.	180.56'

DRAINAGE EASEMENTS

EASE. NO.	BEARING	DISTANCE
14	N.16°32'13"W.	305.0'
15	N.26°27'02"E.	50.22'
16	N.19°43'11"E.	440.0'
17	N.58°16'49"W.	71.0'
18	N.66°37'16"W.	60.56'
19	N.52°16'49"W.	65.91'

0263-303

PREPARED BY:
 E. BRETT CULPEPPER
 C F S AND ASSOCIATES, INC.
 CONSULTING ENGINEERS
 FT. PIERCE, FLORIDA

KINGS POINT #6
 (SHEET 2 OF 2)

39/17

