

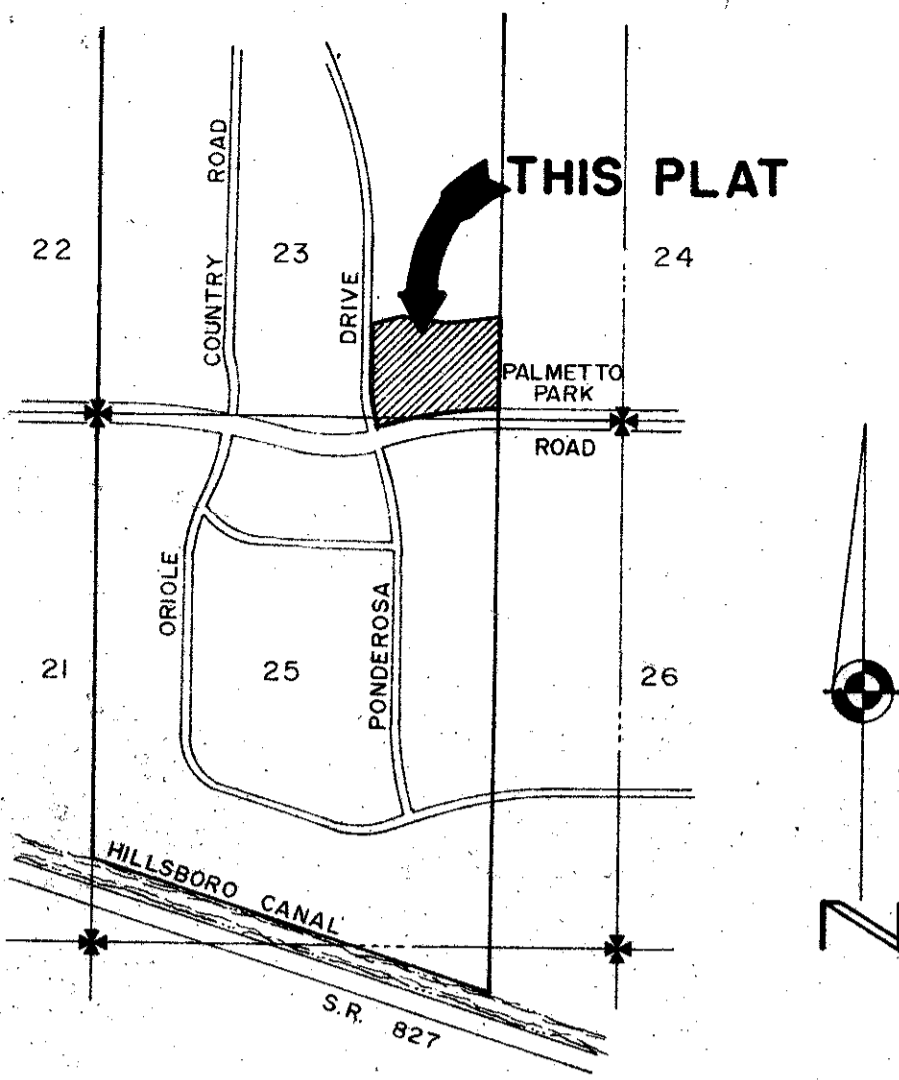
182

STATE OF FLORIDA
COUNTY OF PALM BEACH

THIS PLAT WAS FILED FOR RECORD AT 7:13 AM ON THE 30 DAY OF December 1979, AND DULY RECORDED IN PLAT BOOK 22 PAGE 182-193.

JOHN B. DUNKLE
CLERK OF CIRCUIT COURT

BY John A. Farina



LOCATION MAP
SCALE: 1" = 2000'

WHISPERING PINES PARK

A REPLAT OF TRACT "I", BOUNDARY PLAT OF ORIOLE COUNTRY (PLAT BOOK 32, PAGES 175-180) SECTIONS 23 AND 26, TOWNSHIP 47 SOUTH, RANGE 41, EAST, PALM BEACH COUNTY, FLORIDA

PREPARED BY
BROOME AND FARINA, INC.
ENGINEERS - PLANNERS - SURVEYORS
CORAL SPRINGS, FLORIDA
By: JOHN A. FARINA, P.L.S. 1564

SURVEY NOTES

1. P.R.M. Indicates Permanent Reference Monuments
2. P.C.P. Indicates Permanent Control Points
3. Bearings shown hereon are relative to the North line of Section 26, Township 47 South, Range 41 East as shown on the BOUNDARY PLAT OF ORIOLE COUNTRY, per Plat Book 32, Pages 175 thru 180 inclusive, Palm Beach County Records; ie. N 89° 44' 56" W.

SHEET 1 of 2

DESCRIPTION

Tract "I" of the BOUNDARY PLAT OF ORIOLE COUNTRY, according to the plat thereof, as recorded in Plat Book 32, Pages 175 thru 180 inclusive of the Public Records of Palm Beach County, Florida. Said lands situate, lying, and being in Palm Beach County, Florida.

DEDICATION

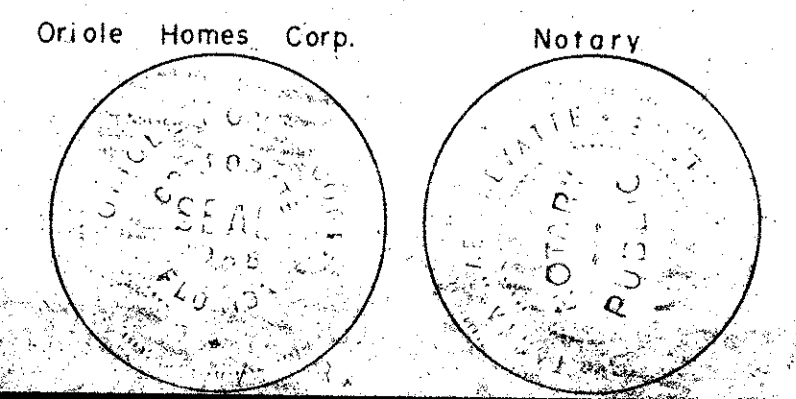
KNOW ALL MEN BY THESE PRESENTS that ORIOLE HOMES CORP. a Florida corporation, and owner of the lands shown hereon, being in Sections 23 & 26, Township 47 South, Range 41 East, Palm Beach County, Florida, shown hereon as "WHISPERING PINES PARK", being a replat of Tract "I" of the BOUNDARY PLAT OF ORIOLE COUNTRY, Plat Book 32, Pages 175 thru 180 inclusive, of the Public Records of Palm Beach County, Florida, Sections 23 & 26, Township 47 South, Range 41 East, Palm Beach County, Florida, Being also further described as indicated hereon has caused the same to be surveyed and platted as shown and does hereby dedicate as follows:

1. The Utility and Drainage Easements, as shown, are hereby dedicated in perpetuity for the construction, operation and maintenance of utilities and drainage facilities.
2. Parcel R-1, as shown hereon, is hereby designated as and declared to be a "Recreation Area" as such term is defined in the Declaration of Protective Covenants and Restrictions for Loggers' Run, as recorded in O.R. Book 2793, Page 1, of the Public Records of Palm Beach County, Florida, and is the perpetual maintenance obligation of Loggers' Run, Inc.
3. Parcel "C-1", as shown, is hereby dedicated in-perpetuity to Loggers' Run, Inc., a Florida corporation, not-for-profit, for drainage and water management purposes and is the perpetual maintenance obligation of said Loggers' Run, Inc.
4. Access Control Easements, as shown, are hereby dedicated to the Board of County Commissioners of Palm Beach County, Florida, for the control of access to and from adjacent public roadways shown hereon.

In witness whereof the said corporation has caused these presents to be signed by its President and attested to by its Assistant Secretary and its corporate seal to be affixed hereto by and with authority of its board of directors, this 7th day of December A.D. 1979.

Attest [Signature]
A. NUNEZ
Assistant Secretary

[Signature]
Oriole Homes Corp.
R. D. LEVY
President



OWNER'S ACKNOWLEDGEMENT

Before me personally appeared R.D. Levy and A. Nunez to me known to be the individuals described in and who executed the foregoing instrument as President and attested to by the Assistant Secretary of the above named ORIOLE HOMES CORP. a Florida corporation, and severally acknowledged to and before me that they executed such instrument as such officers of said corporation and that the seal affixed to the foregoing instrument is the corporate seal of said corporation and that it was affixed to said instrument by due and regular corporate authority, and that said instrument is the free act and deed of said corporation.

Witness my hand and official seal, this 7th day of December A.D., 1979.

June 28, 1982
My Commission Expires

Janice Rae Prevatte
Notary Public

AREA TABULATIONS

Parcel R-1	25.650	Ac.
Parcel C-1	2.108	Ac.
Total	27.758±	Ac.

TITLE CERTIFICATE

STATE OF FLORIDA
COUNTY OF PALM BEACH } SS

We, the Alpha Title Company, Inc., a title insurance company, duly licensed in the State of Florida, do hereby certify that we have examined the title to the hereon described property; that we find the title to the property is vested in ORIOLE HOMES CORP. that the current taxes have been paid; and that we find the property is not encumbered by mortgages.

Date: Dec 11, 1979

By [Signature]
Alpha Title Company, Inc.
Harold J. Elkman, Vice President

APPROVALS - PALM BEACH COUNTY FLORIDA

BOARD OF COUNTY COMMISSIONERS

This plat is hereby approved for record, this 18th day of December, A.D., 1979.

By [Signature]
Bill Bailey, Chairman
Palm Beach County
Board of County Commissioners

COUNTY ENGINEER

This plat is hereby approved for record, this 18th day of December, A.D., 1979.

By [Signature]
Herbert F. Kahlert
Palm Beach County Engineer

ATTEST: [Signature] Clerk

BOARD OF COUNTY COMMISSIONERS

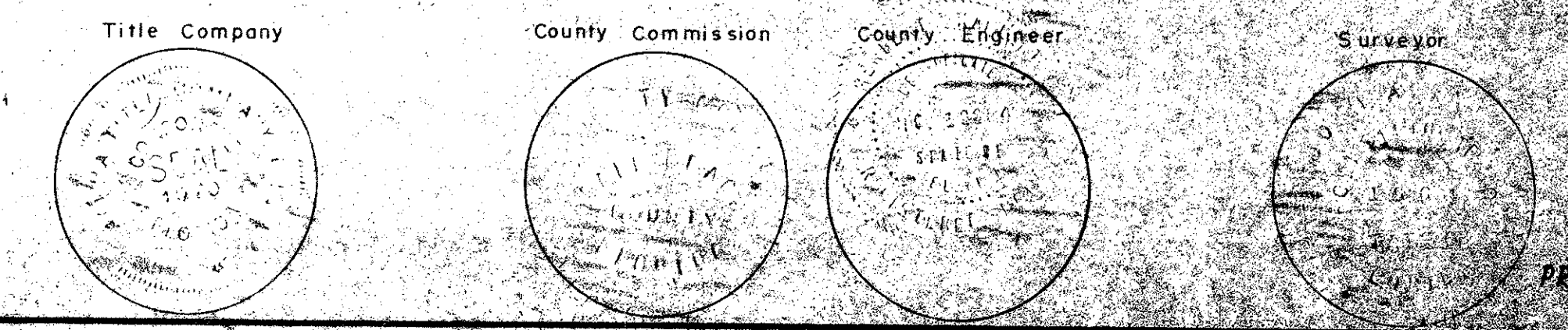
By [Signature]
Deputy Clerk

SURVEYOR'S CERTIFICATE

This is to certify that the plat shown hereon is a true and correct presentation of a survey made under my responsible direction and supervision and that said survey is accurate to the best of my knowledge and belief and that (P.R.M.) Permanent Reference Monuments have been placed and (P.C.Ps) Permanent Control Points will be placed as required by law and further that the survey data complies with all the requirements of Chapter 177, Florida Statutes, as amended, and ordinances of Palm Beach County, Florida.

Date: DEC 10, 1979

[Signature]
BROOME & FARINA, INC.
Engineers - Planners - Surveyors
John A. Farina
Professional Land Surveyor
Florida Registration No. 1564



Whispering Pines Park
Loggers Run
38/1198
0275-316