

# VISTA VERDE SECTION TWO OF VIA VERDE P.U.D.

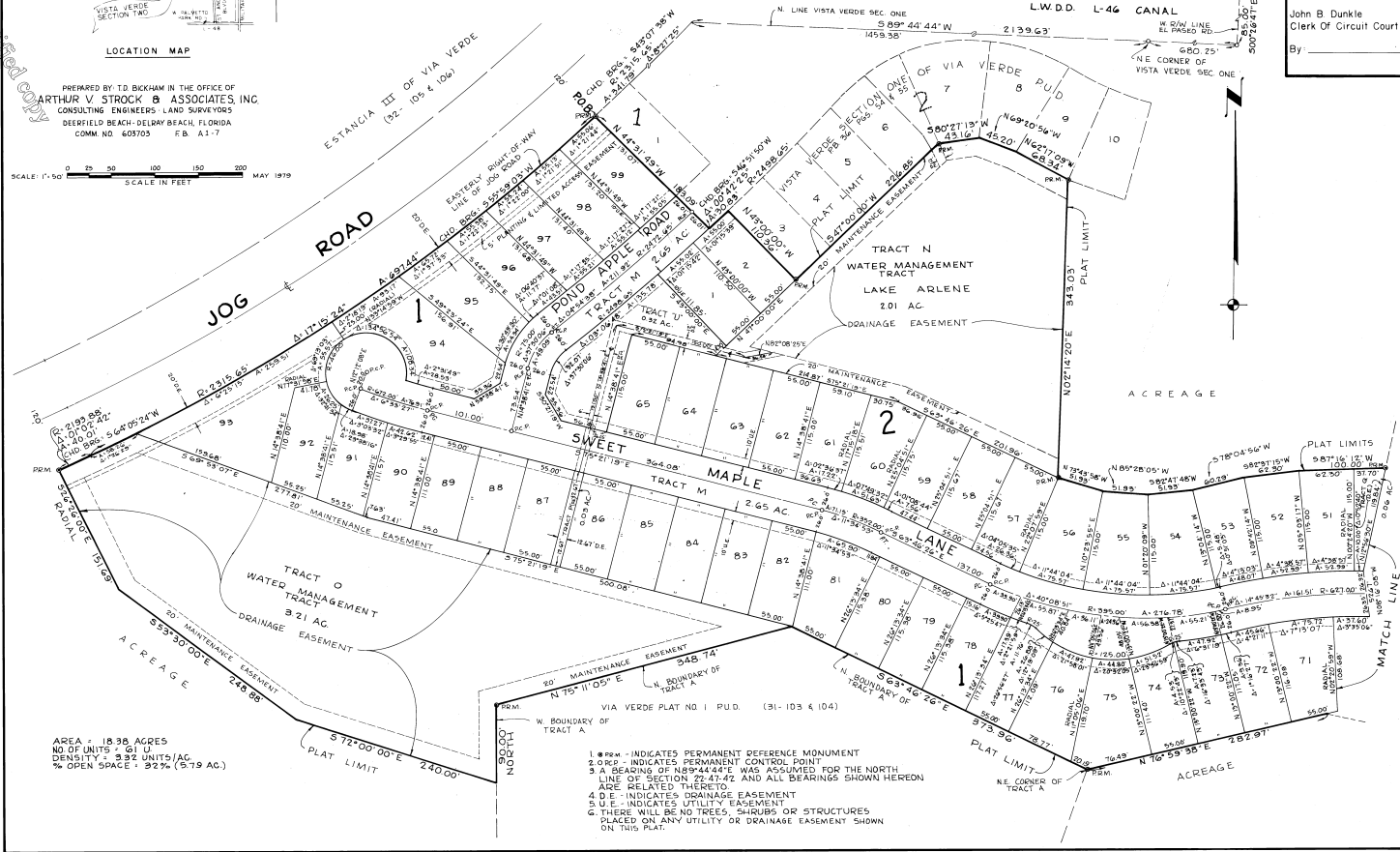
A PORTION OF SECTION 22, TWP 47 S., RGE. 42 E.  
PALM BEACH COUNTY, FLORIDA

State of Florida  
County of Palm Beach  
This Plat Was Filed For  
Record At \_\_\_\_\_ Day Of \_\_\_\_\_  
1979 And Duly Recorded  
in Plat Book \_\_\_\_\_ Pages  
And \_\_\_\_\_  
John B. Dunkle  
Clerk of Circuit Court  
By \_\_\_\_\_



This is not a certified copy

PREPARED BY T.D. BICKHAM IN THE OFFICE OF  
**ARTHUR V. STROCK & ASSOCIATES, INC.**  
CONSULTING ENGINEERS - LAND SURVEYORS  
DEERFIELD BEACH-DELRAY BEACH, FLORIDA  
COMM. NO. 603103 F.B. A-1-7



AREA = 18.38 ACRES  
NO OF UNITS = 61 U  
DENSITY = 3.32 UNITS/AC  
% OPEN SPACE = 32% (5.9 AC)

- 1. PPM - INDICATES PERMANENT REFERENCE MONUMENT
- 2. ORP - INDICATES PERMANENT CONTROL POINT
- 3. A BEARING OF N89°44'44"E WAS ASSUMED FOR THE NORTH LINE OF SECTION 22-47-42 AND ALL BEARINGS SHOWN HEREON ARE RELATED THERETO.
- 4. D.E. - INDICATES DRAINAGE EASEMENT
- 5. U.E. - INDICATES UTILITY EASEMENT
- 6. THERE WILL BE NO TREES, SHRUBS OR STRUCTURES PLACED ON ANY UTILITY OR DRAINAGE EASEMENT SHOWN ON THIS PLAT.