

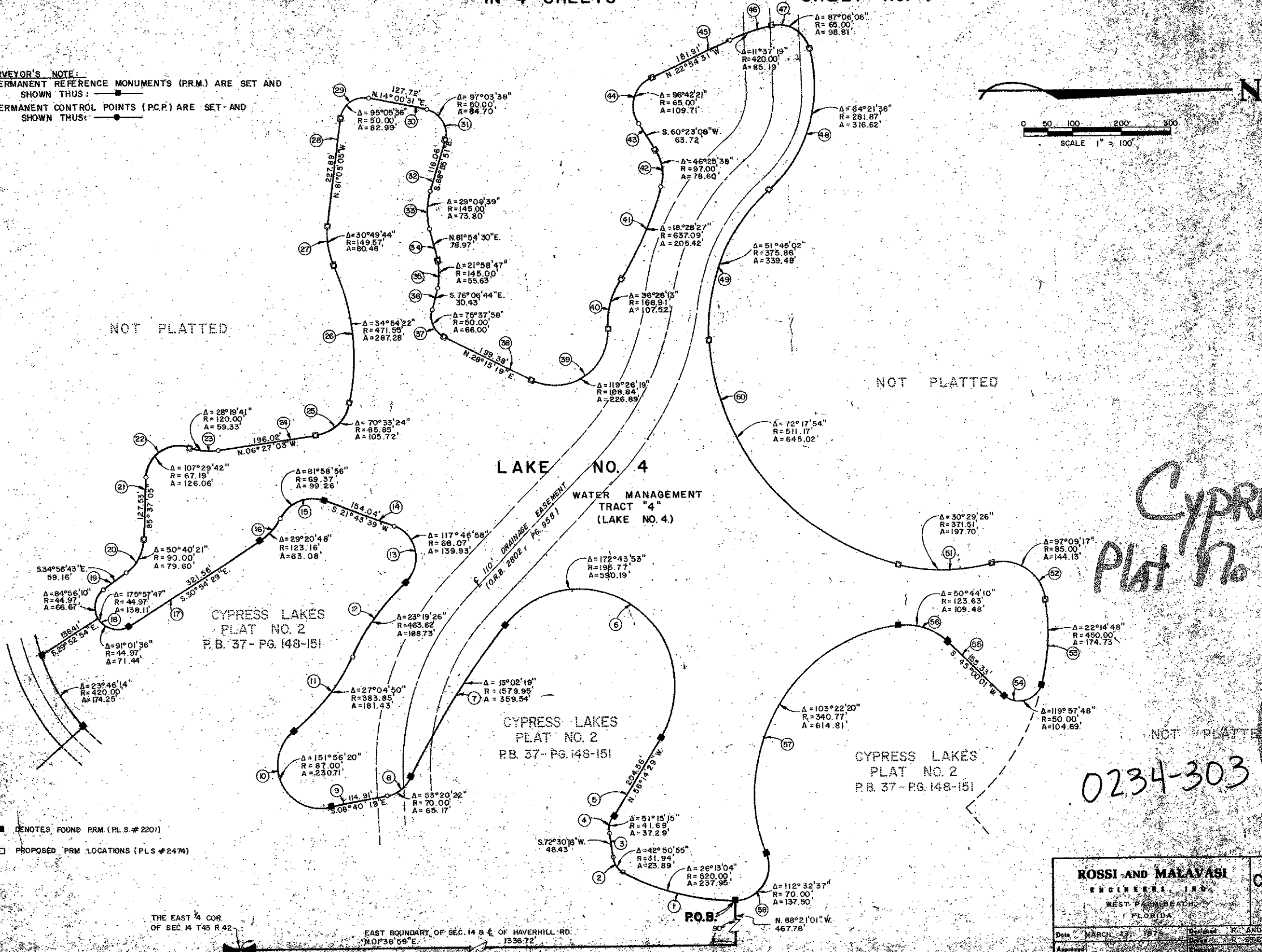
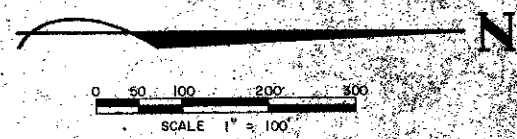


A PLANNED UNIT DEVELOPMENT IN CYPRESS LAKES
CYPRESS LAKES-PLAT NO.3-A
 SECTION 14, TOWNSHIP 43 SOUTH, RANGE 42 EAST
 PALM BEACH COUNTY, FLORIDA
 IN 4 SHEETS SHEET NO. 4

158

STATE OF FLORIDA
 COUNTY OF PALM BEACH
 The Plat is filed for record of
 No. 0234-303
 on 03-13-1975
 and is recorded in Plat Book No.
 158
 D.W. B. DUNKLE, Clerk, Circuit Court

SURVEYOR'S NOTE:
 1. PERMANENT REFERENCE MONUMENTS (P.R.M.) ARE SET AND SHOWN THUS: 
 2. PERMANENT CONTROL POINTS (P.C.P.) ARE SET AND SHOWN THUS: 



*CYPRESS LAKES
 PLAT NO. 3-A P.U.D.*

*39
 158*

0234-303

■ DENOTES FOUND P.R.M. (P.L.S. #2201)
 □ PROPOSED P.R.M. LOCATIONS (P.L.S. #2476)

ROSSI AND MALAVASI ENGINEERS, INC. WEST PALM BEACH, FLORIDA		CYPRESS LAKES-PLAT NO. 3-A IN 4 SHEETS SHEET NO. 4	
Date: MARCH 13, 1975	Prepared: R. ANDERSON	Checked: R. STEPHENSON	Approved: R. STEPHENSON

THE EAST 1/4 COR. OF SEC. 14 T43 S 42 E
 EAST BOUNDARY OF SEC. 14 S 4 E OF HAVERHILL RD. 1356.72'